

OAKLAND SIX DEPARTURE

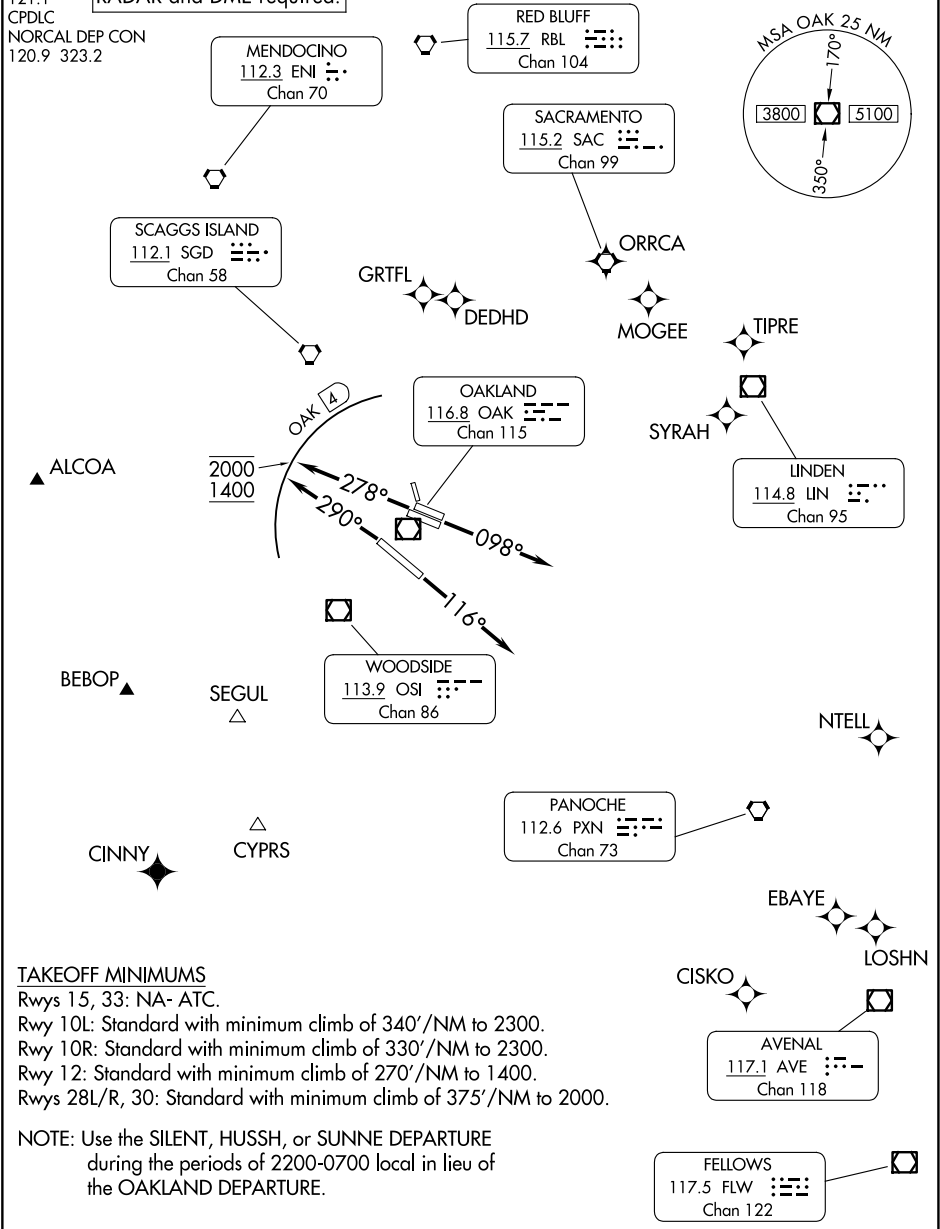
AL-294 (FAA)

OAKLAND SAN FRANCISCO BAY (OAK)  
OAKLAND, CALIFORNIA

D-ATIS  
133.775  
CLNC DEL  
121.1  
CPDLC  
NORCAL DEP CON  
120.9 323.2

RNAV 1-GPS. From ALCOA, BEBOP, CINNY, CISKO, DEDHD, EBAYE,  
GRTFL, LOSHN, MOGEE, NTELL, ORRCA, SYRAH, or TIPRE.  
RADAR and DME required.

TOP ALTITUDE:  
ASSIGNED BY ATC



TAKEOFF MINIMUMS

Rwys 15, 33: NA- ATC.

Rwy 10L: Standard with minimum climb of 340'/NM to 2300.

Rwy 10R: Standard with minimum climb of 330'/NM to 2300.

Rwy 12: Standard with minimum climb of 270'/NM to 1400.

Rwys 28L/R, 30: Standard with minimum climb of 375'/NM to 2000.

NOTE: Use the SILENT, HUSSH, or SUNNE DEPARTURE during the periods of 2200-0700 local in lieu of the OAKLAND DEPARTURE.

(CONTINUED ON FOLLOWING PAGE)

NOTE: Chart not to scale.

OAKLAND SIX DEPARTURE

(OAK6.OAK) 25JAN24

OAKLAND, CALIFORNIA  
OAKLAND SAN FRANCISCO BAY (OAK)

SW-2, 22 JAN 2026 to 19 FEB 2026

SW-2, 22 JAN 2026 to 19 FEB 2026

DEPARTURE ROUTE DESCRIPTION	
<p><u>TAKEOFF RUNWAYS 10L/R:</u> Climb on heading 098° for RADAR vectors to assigned route/fix, thence. . . .</p> <p><u>TAKEOFF RUNWAY 12:</u> Climb on heading 116° for RADAR vectors to assigned route/fix, thence. . . .</p> <p><u>TAKEOFF RUNWAYS 28L/R:</u> Climb on heading 278° for RADAR vectors to assigned route/fix. Cross 4 DME northwest of OAK VOR/DME at or above 1400 and at or below 2000, thence. . . .</p> <p><u>TAKEOFF RUNWAY 30:</u> Climb on heading 290° for RADAR vectors to assigned route/fix. Cross 4 DME northwest of OAK VOR/DME at or above 1400 and at or below 2000, thence. . . .</p> <p>. . . .maintain ATC assigned altitude. Expect filed altitude ten minutes after departure.</p> <p><u>LOST COMMUNICATIONS:</u> If not in contact with departure control after reaching 5000', continue climb to assigned altitude and proceed direct to assigned route/fix.</p>	

SW-2, 22 JAN 2026 to 19 FEB 2026

SW-2, 22 JAN 2026 to 19 FEB 2026