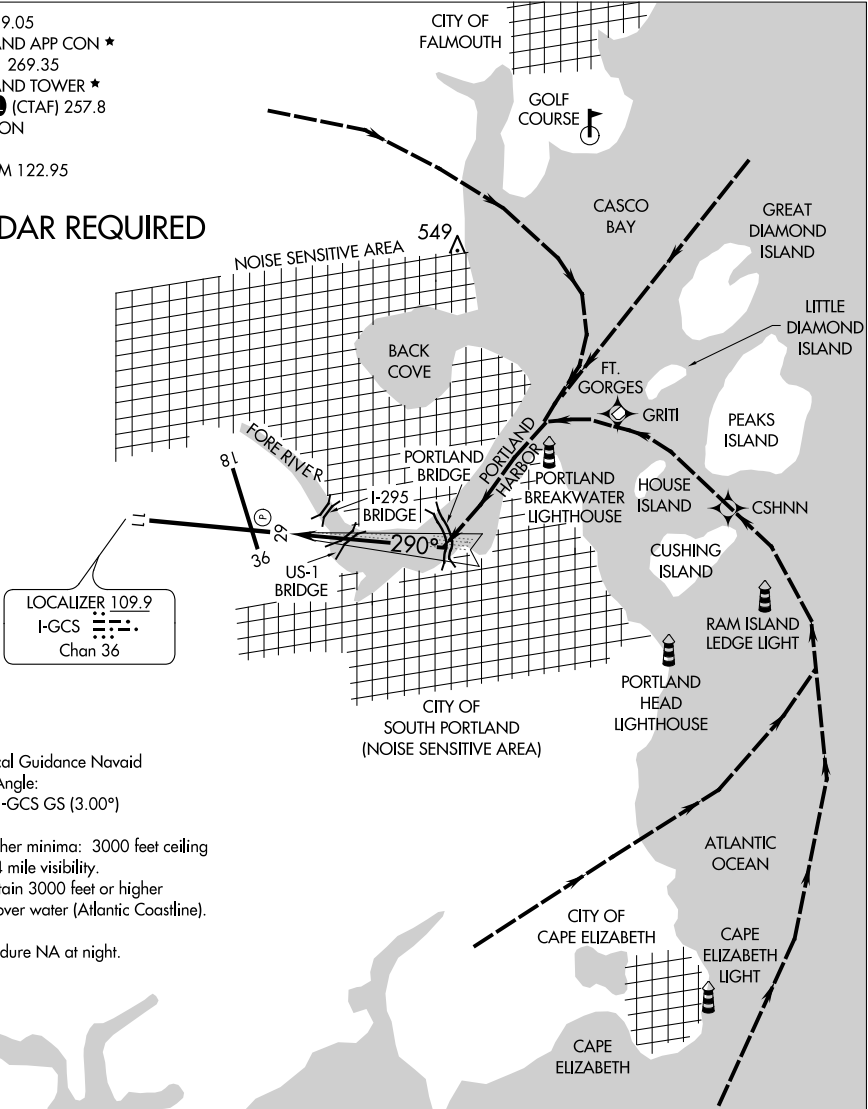


ATIS 119.05
PORTLAND APP CON ★
119.75 269.35
PORTLAND TOWER ★
120.9 0 (CTAF) 257.8
GND CON
121.9
UNICOM 122.95

RADAR REQUIRED



Vertical Guidance Navaid
and Angle:
LOC I-GCS GS (3.00°)

Weather minima: 3000 feet ceiling
and 4 mile visibility.
Maintain 3000 feet or higher
until over water (Atlantic Coastline).

Procedure NA at night.

| | | | | | | | |
|------|---|---|---|---|---|---|---|
| 1 NM | 2 | 3 | 4 | 5 | 6 | 7 | 8 |
|------|---|---|---|---|---|---|---|

From the south over Cape Elizabeth proceed over water keeping Portland Head Lighthouse and Ram Island Ledge Light on the left. Proceed north of Cushing Island passing over the southwest edge of Peaks Island. Turn left towards the entrance of Portland Harbor between Fort Gorges on the right and Portland Breakwater Lighthouse on the left. Proceed southwest towards the Portland bridge and LOC course.

From the north, proceed to the entrance of Portland Harbor with Fort Gorges on the left. Then proceed southwest toward the Portland bridge and LOC course.