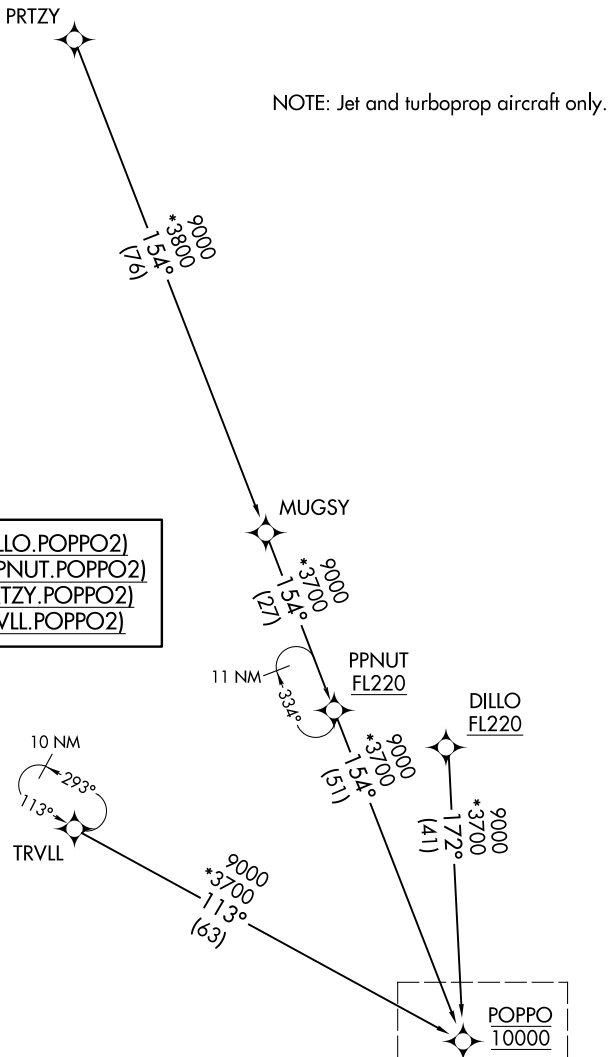


## POPPO TWO ARRIVAL (RNAV) Transition Routes

SAN ANTONIO, TEXAS

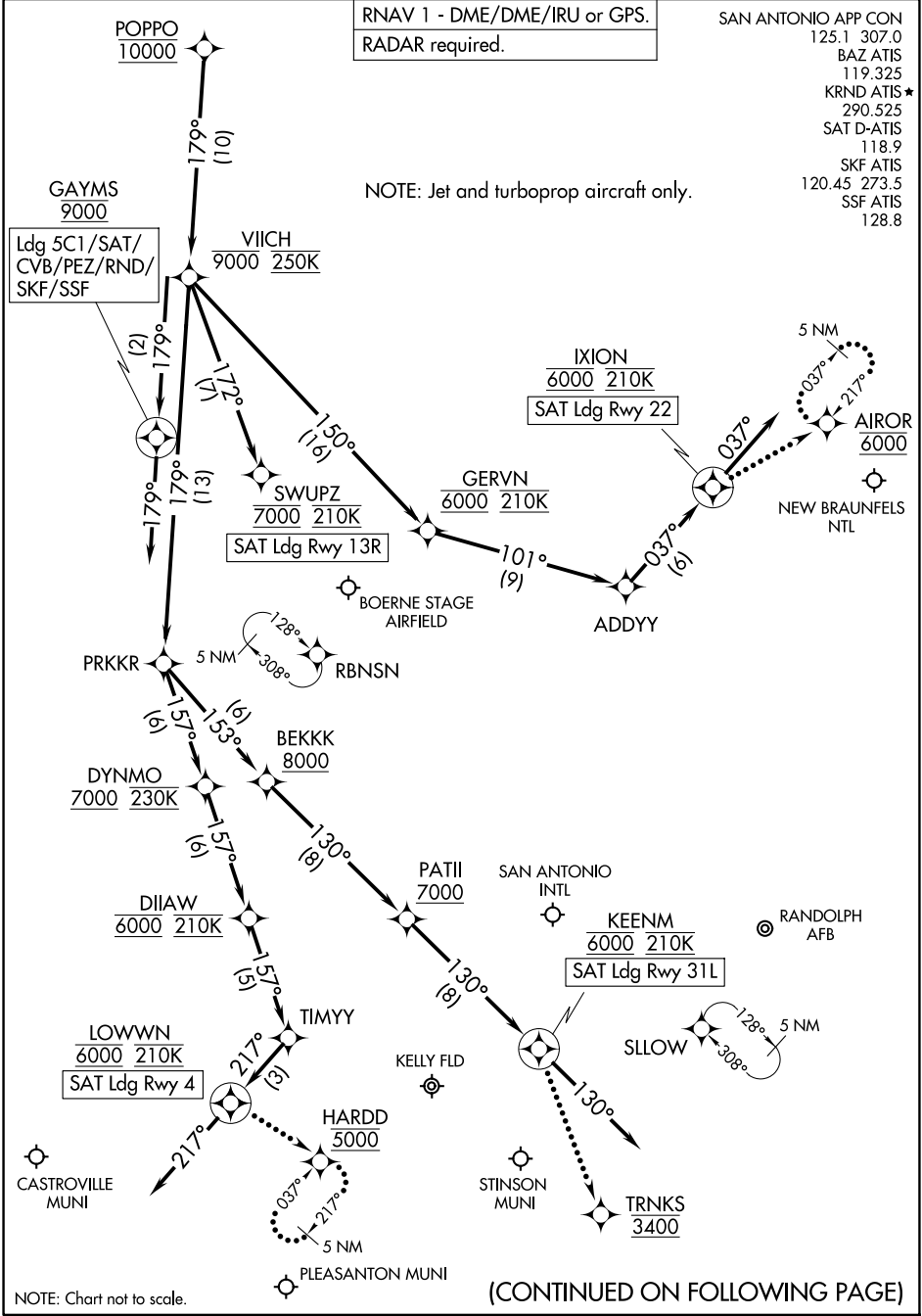
RNAV 1 - DME/DME/IRU or GPS.
RADAR required.

SAN ANTONIO APP CON  
125.1 307.0  
BAZ ATIS  
119.325  
KRND ATIS ★  
290.525  
SAT D-ATIS  
118.9  
SKF ATIS  
120.45 273.5  
SSF ATIS  
128.8



NOTE: Chart not to scale. (CONTINUED ON FOLLOWING PAGE)

See following page  
for arrival routes.



ARRIVAL ROUTE DESCRIPTION

SAN ANTONIO INTL (SAT): From POPPO on track 179° to cross VIICH at or below 9000 and at 250K.

LANDING SAT RUNWAY 4: From VIICH on track 179° to PRKKR, then on track 157° to cross DYNMO at or above 7000 and at 230K, then on track 157° to cross DIIAW at 6000 and at 210K, then on track 157° to TIMYY, then on track 217° to cross LOWWN at 6000 and at 210K, then on track 217°. Expect RADAR vectors to final approach course.

LANDING SAT RUNWAY 13R: From VIICH on track 172° to cross SWUPZ at 7000 and at 210K. Expect ILS or LOC RWY 13R approach.

LANDING SAT RUNWAY 22: From VIICH on track 150° to cross GERVN at 6000 and at 210K, then on track 101° to ADDYY, then on track 037° to cross IXION at 6000 and at 210K, then on track 037°. Expect RADAR vectors to final approach course.

LANDING SAT RUNWAY 31L: From VIICH on track 179° to PRKKR, then on track 153° to cross BEKKK at or above 8000, then on track 130° to cross PATII at or above 7000, then on track 130° to cross KEENM at 6000 and at 210K, then on track 130°. Expect RADAR vectors to final approach course.

LANDING SKF/BAZ/CVB/SSF/PEZ/5C1/RND: From POPPO on track 179° to cross VIICH at or below 9000 and at 250K, then on track 179° to cross GAYMS at 9000, then on track 179°. Expect RADAR vectors to final approach course.

LOST COMMUNICATIONS

SAT RUNWAY 4: After LOWWN proceed to HARDD at 5000 and hold.

SAT RUNWAY 22: After IXION proceed to AIROR at 6000 and hold.

SAT RUNWAY 31L: After KEENM proceed to TRNKS at 3400, then on ILS or LOC RWY 31L or RNAV (GPS) Y RWY 31L approach.