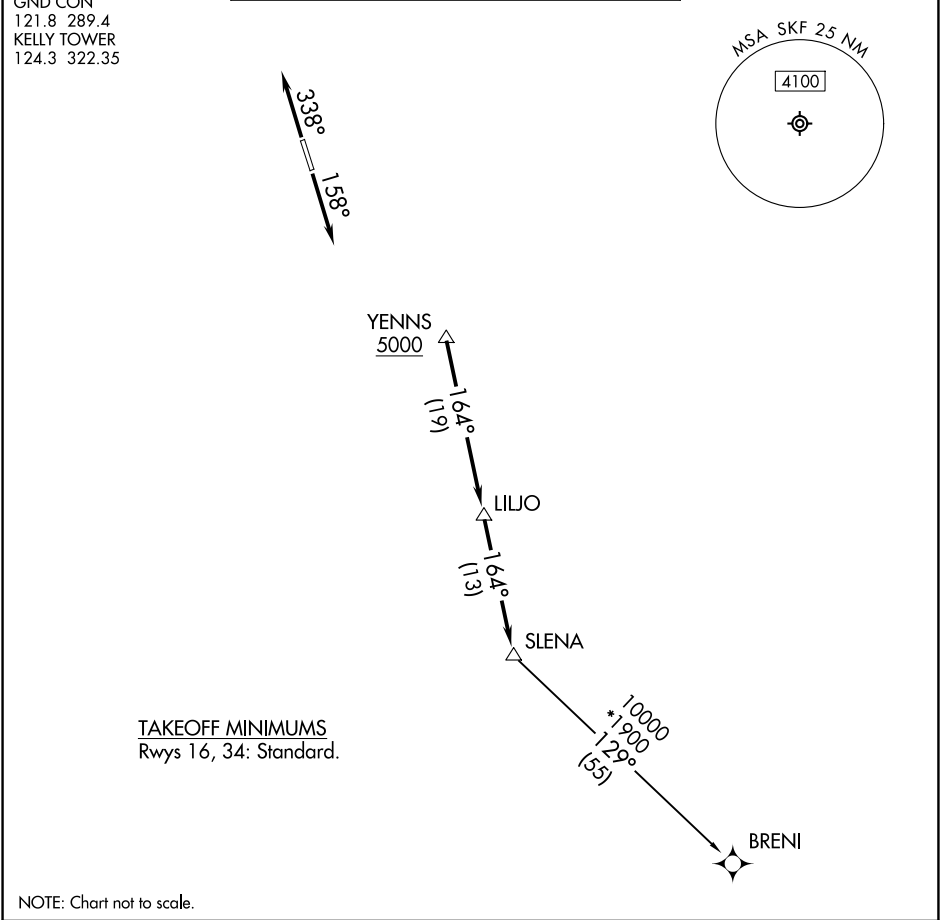


SAN ANTONIO DEP CON 125.7 290.225 ATIS 120.45 273.5 GND CON 121.8 289.4 KELLY TOWER 124.3 322.35	RNAV 1 - DME/DME/IRU or GPS. RADAR required for non-GPS equipped aircraft. RADAR required.	TOP ALTITUDE: ASSIGNED BY ATC
---	--	----------------------------------



DEPARTURE ROUTE DESCRIPTION
TAKEOFF RUNWAY 16: Climb on heading 158° or as assigned by ATC, for vectors to YENNS. Thence. . .
TAKEOFF RUNWAY 34: Climb on heading 338° or as assigned by ATC, for vectors to YENNS. Thence. . .
. . .on track 164° to LILJO, then on track 164° to SLENA, then on transition. Maintain ATC assigned altitude. Expect filed altitude 10 minutes after departure.
BRENI TRANSITION (SLENA2.BRENI)