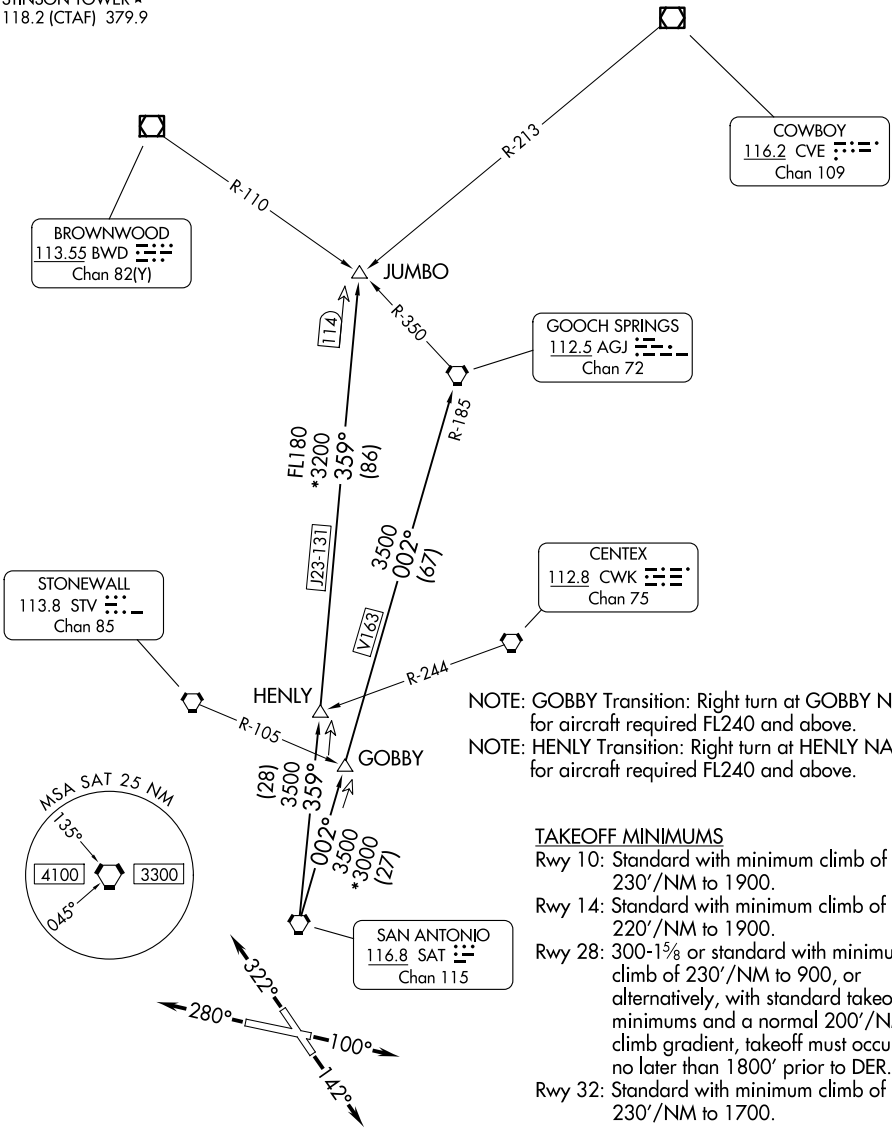


ALAMO FIVE DEPARTURE

SAN ANTONIO DEP CON
125.7 290.225
ATIS
128.8
CLNC DEL (When twr closed)
121.7
GND CON
121.7 379.9
STINSON TOWER ★
118.2 (CTAF) 379.9

RADAR required.

TOP ALTITUDE:
ASSIGNED BY ATC



NOTE: Chart not to scale.

(CONTINUED ON FOLLOWING PAGE)

ALAMO FIVE DEPARTURE

SC-3, 22 JAN 2026 to 19 FEB 2026

SC-3, 22 JAN 2026 to 19 FEB 2026

ALAMO FIVE DEPARTURE



DEPARTURE ROUTE DESCRIPTION

TAKEOFF RUNWAY 10: Climb on heading 100° or as assigned by ATC for RADAR vectors to SAT VORTAC, thence. . .

TAKEOFF RUNWAY 14: Climb on heading 142° or as assigned by ATC for RADAR vectors to SAT VORTAC, thence. . .

TAKEOFF RUNWAY 28: Climb on heading 280° or as assigned by ATC for RADAR vectors to SAT VORTAC, thence. . .

TAKEOFF RUNWAY 32: Climb on heading 322° or as assigned by ATC for RADAR vectors to SAT VORTAC, thence. . .

. . .on transition/route. Maintain ATC assigned altitude. Expect filed altitude 10 minutes after departure.

GOBBY TRANSITION (ALAMO5.GOBBY): From over SAT VORTAC on SAT R-002 to GOBBY.

GOOCH SPRINGS TRANSITION (ALAMO5.AGJ): From over SAT VORTAC on SAT R-002 to GOBBY, then on SAT R-002 and AGJ R-185 to AGJ VORTAC.

HENLY TRANSITION (ALAMO5.HENLY): From over SAT VORTAC on SAT R-359 to HENLY.

JUMBO TRANSITION (ALAMO5.JUMBO): From over SAT VORTAC on SAT R-359 to JUMBO.

SC-3, 22 JAN 2026 to 19 FEB 2026

SC-3, 22 JAN 2026 to 19 FEB 2026