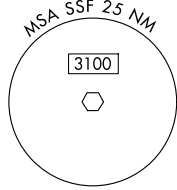


SAN ANTONIO DEP CON
125.7 290.225
ATIS
128.8
CLNC DEL (When twr closed)
121.7
GND CON
121.7 379.9
STINSON TOWER ★
118.2 (CTAF) 379.9

RADAR required.
DME required.



SAN ANTONIO
116.8 SAT
Chan 115

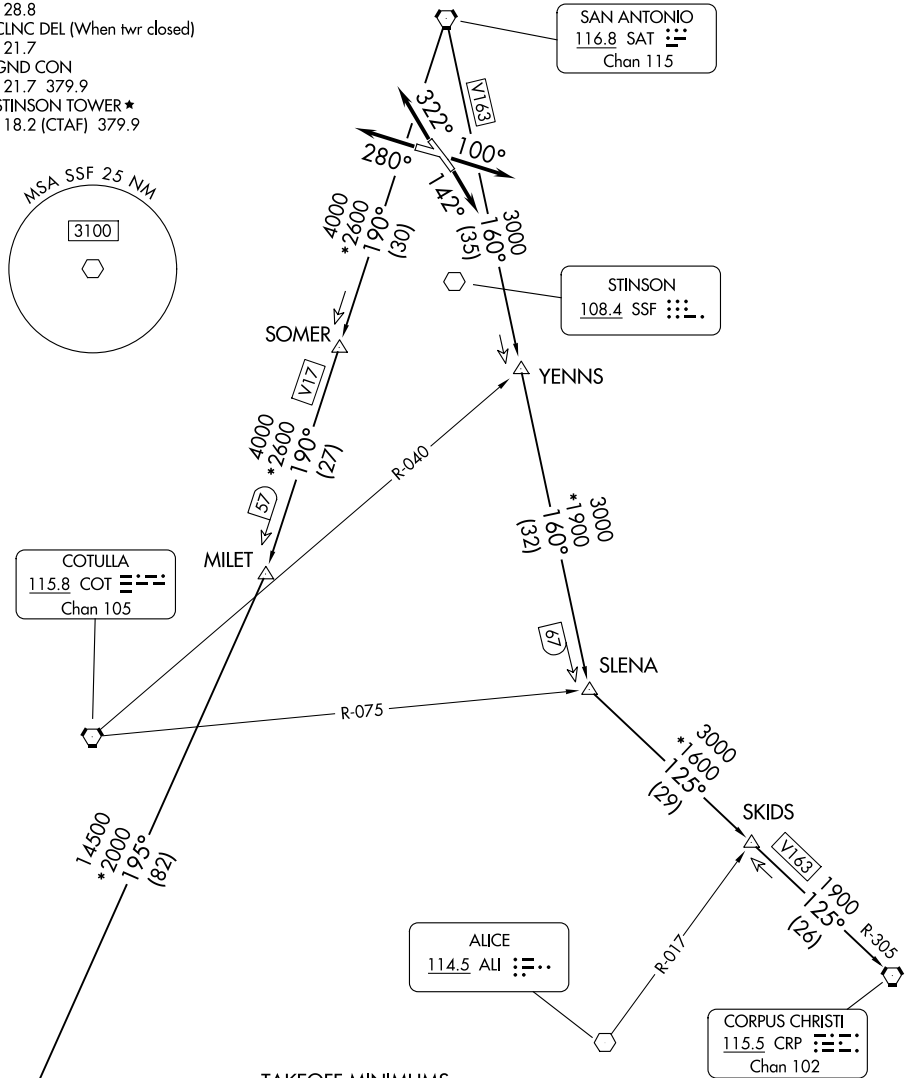
STINSON
108.4 SSF

COTULLA
115.8 COT
Chan 105

ALICE
114.5 ALI

CORPUS CHRISTI
115.5 CRP
Chan 102

LAREDO
117.4 LRD
Chan 121



TAKEOFF MINIMUMS
Rwy 10: Standard with minimum climb of 230'/NM to 1900.
Rwy 14: Standard with minimum climb of 220'/NM to 1900.
Rwy 28: 300-1½ or standard with minimum climb of 230'/NM to 900, or alternatively, with standard takeoff minimums and a normal 200'/NM climb gradient, takeoff must occur no later than 1800' prior to DER.
Rwy 32: Standard with minimum climb of 230'/NM to 1700.

NOTE: Chart not to scale. (CONTINUED ON FOLLOWING PAGE)

SC-3, 22 JAN 2026 to 19 FEB 2026

SC-3, 22 JAN 2026 to 19 FEB 2026



DEPARTURE ROUTE DESCRIPTION

TAKEOFF RUNWAY 10: Climb on heading 100° or as assigned by ATC for vectors to SAT VORTAC, thence. . . .
TAKEOFF RUNWAY 14: Climb on heading 142° or as assigned by ATC for vectors to SAT VORTAC, thence. . . .
TAKEOFF RUNWAY 28: Climb on heading 280° or as assigned by ATC for vectors to SAT VORTAC, thence. . . .
TAKEOFF RUNWAY 32: Climb on heading 322° or as assigned by ATC for vectors to SAT VORTAC, thence. . . .

. . . .on transition/route. Maintain ATC assigned altitude. Expect filed altitude 10 minutes after departure.

CORPUS CHRISTI TRANSITION (BOWIE8.CRP): From over SAT VORTAC on SAT R-160 to SLENA, then on CRP R-305 to CRP VORTAC.

LAREDO TRANSITION (BOWIE8.LRD): From over SAT VORTAC on SAT R-190 to MILET, then on LRD R-015 to LRD VORTAC.

SC-3, 22 JAN 2026 to 19 FEB 2026

SC-3, 22 JAN 2026 to 19 FEB 2026