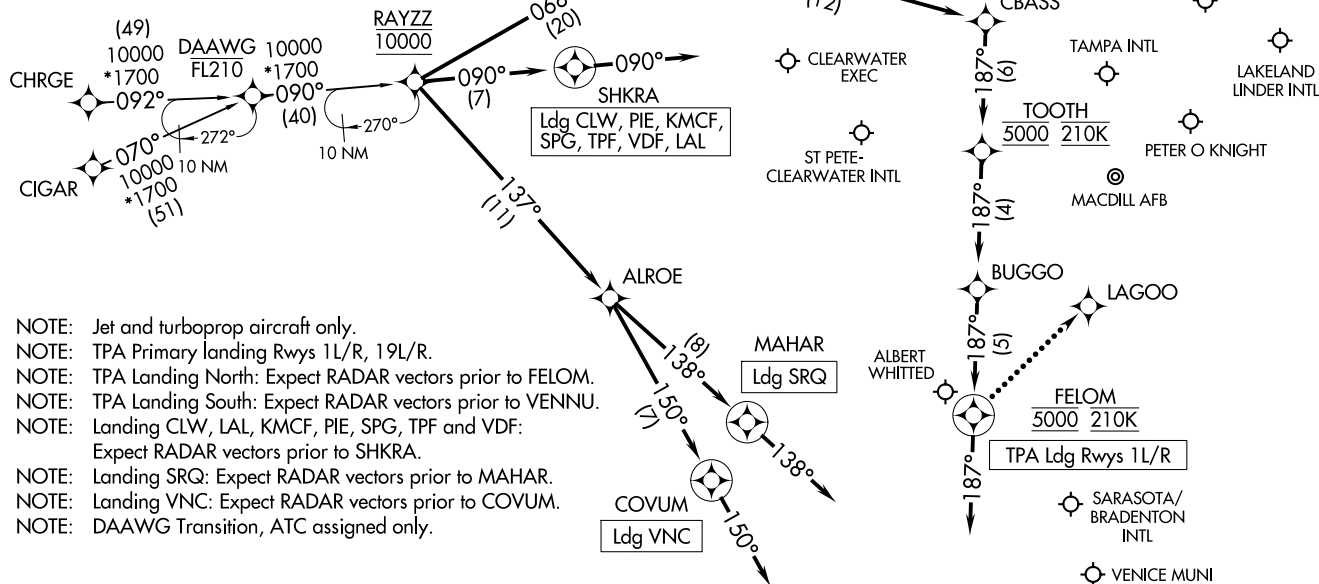


RAYZZ THREE ARRIVAL (RNAV)
(RAYZZ.RAYZZ3) 17APR25

TAMPA APP CON
118.8 239.3
KMCF ATIS
133.825 270.1
LAL ATIS
118.025
PIE ATIS
134.5
SRQ ATIS
124.375
TPA D-ATIS
126.45

RNAV 1 - DME/DME/IRU or GPS.
From CHRGE or CIGAR: RNAV 1 - GPS.
RADAR required.



NOTE: Jet and turboprop aircraft only.
NOTE: TPA Primary landing Rwy 11L/R, 19L/R.
NOTE: TPA Landing North: Expect RADAR vectors prior to FELOM.
NOTE: TPA Landing South: Expect RADAR vectors prior to VENNU.
NOTE: Landing CLW, LAL, KMCF, PIE, SPG, TPF and VDF:
Expect RADAR vectors prior to SHKRA.
NOTE: Landing SRQ: Expect RADAR vectors prior to MAHAR.
NOTE: Landing VNC: Expect RADAR vectors prior to COVUM.
NOTE: DAAWG Transition, ATC assigned only.

(CONTINUED ON FOLLOWING PAGE)

TAMPA, FLORIDA

(RAYZZ.RAYZZ3) 25331
RAYZZ THREE ARRIVAL (RNAV)

AL-416 (FAA)

TAMPA, FLORIDA

NOTE: Chart not to scale.

ARRIVAL ROUTE DESCRIPTION

CHRGE TRANSITION (CHRG.RAYZZ3)
CIGAR TRANSITION (CIGAR.RAYZZ3)
DAAWG TRANSITION (DAAWG.RAYZZ3)

TPA: From RAYZZ on track 068° to HIDOS.

LANDING TPA RUNWAYS 1L/R: From HIDOS on track 111° to CBASS, then on track 187° to cross TOOTH at 5000 and at 210K, then on track 187° to BUGGO, then on track 187° to cross FELOM at 5000 and at 210K, then on track 187°. Expect RADAR vectors to final approach course.

LANDING TPA RUNWAYS 10, 28: From HIDOS on track 093° to BAYAD, then on heading 095°. Expect RADAR vectors to final approach course.

LANDING TPA RUNWAYS 19L/R: From HIDOS on track 093° to ENTAH, then on track 005° to cross VENNU at 5000 and at 210K, then on track 006°. Expect RADAR vectors to final approach course.

LANDING CLW/PIE/KMCF/SPG/TPF/VDF/LAL: From RAYZZ on track 090° to SHKRA, then on track 090°. Expect RADAR vectors to final approach course.

LANDING SRQ: From RAYZZ on track 137° to ALROE, then on track 138° to MAHAR, then on track 138°. Expect RADAR vectors to final approach course.

LANDING VNC: From RAYZZ on track 137° to ALROE, then on track 150° to COVUM, then on track 150°. Expect RADAR vectors to final approach course.

LOST COMMUNICATIONS
TPA LANDING NORTH: After FELOM, proceed to LAGOO, then proceed on the Rwy 1L approach.
TPA LANDING SOUTH: After VENNU, proceed to FADDI, then proceed on the Rwy 19R approach.

SE-3, 22 JAN 2026 to 19 FEB 2026

SE-3, 22 JAN 2026 to 19 FEB 2026