

## ATASYS THREE DEPARTURE (OBSTACLE) (RNAV)

AL-422 (FAA)

TOLEDO, WASHINGTON

---

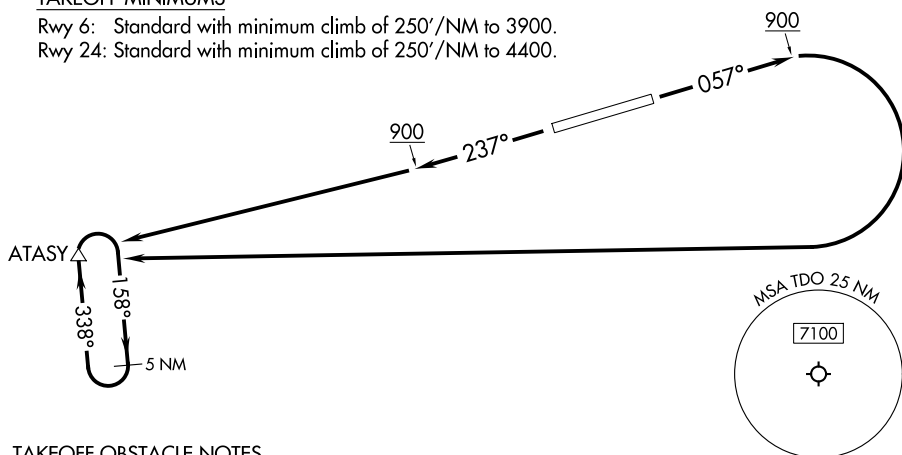
RNAV 1 - GPS.

SEATTLE CENTER  
124.2 317.6

## TAKEOFF MINIMUMS

Rwy 6: Standard with minimum climb of 250'/NM to 3900.

Rwy 24: Standard with minimum climb of 250'/NM to 4400.



## TAKEOFF OBSTACLE NOTES

Rwy 6: Wind indicator, tower, fence, tree beginning 6' from DER, 158' left of centerline, up to 20' AGL/390' MSL.

Trees beginning 16' from DER, 257' right of centerline, up to 20' AGL/393' MSL.

Trees beginning 188' from DER, 16' right of centerline, up to 396' MSL.

Tree 600' from DER, 277' right of centerline, 29' AGL/400' MSL.

Tree 813' from DER, 378' right of centerline, 32' AGL/404' MSL.

Tree 1568' from DER, 903' left of centerline, 47' AGL/423' MSL.

Rwy 24: Tree 16' from DER, 384' left of centerline, 39' AGL/396' MSL.

Pole 64' from DER, 356' right of centerline, 20' AGL/372' MSL.

Buildings beginning 77' from DER, 407' right of centerline, up to 28' AGL/378' MSL.

Tree 107' from DER, 269' left of centerline, 48' AGL/402' MSL.

Pole 225' from DER, 371' right of centerline, 31' AGL/381' MSL.

Tree 226' from DER, 404' right of centerline, 384' MSL.

Tree 249' from DER, 379' right of centerline, 386' MSL.

Light poles, towers, traverse way, trees beginning 276' from DER, 135' right of centerline, up to 80' AGL/435' MSL.

Trees, traverse way beginning 336' from DER, 83' left of centerline, up to 54' AGL/405' MSL.

Trees beginning 2331' from DER, 191' right of centerline, up to 102' AGL/445' MSL.

Trees beginning 2420' from DER, 211' right of centerline, up to 130' AGL/472' MSL.

Trees beginning 2524' from DER, 35' right of centerline, up to 138' AGL/481' MSL.

Tree 2720' from DER, 1090' left of centerline, 94' AGL/446' MSL.

Tree 2841' from DER, 38' left of centerline, 108' AGL/453' MSL.

Trees beginning 2974' from DER, 31' right of centerline, up to 482' MSL.

NOTE: Chart not to scale.

## DEPARTURE ROUTE DESCRIPTION

**TAKEOFF RUNWAY 6:** Climb on heading 057° to 900, then climbing right turn to 5000 direct ATASY and hold, thence. . . .

**TAKEOFF RUNWAY 24:** Climb on heading 237° to 900, then climb to 5000 direct ATASY and hold, thence. . . .

...continue climb-in-hold to 5000 before proceeding on course. When authorized by ATC, continue climb to 6000 before proceeding on course.

## ATASY THREE DEPARTURE (OBSTACLE) (RNAV)

TOLEDO, WASHINGTON

(ATASY3.ATASY) 12JUN25

ED CARLSON MEML FLD/SOUTH LEWIS COUNTY (TDO)

NW-1, 22 JAN 2026 to 19 FEB 2026

NW-1, 22 JAN 2026 to 19 FEB 2026