

(REBL5, REBL) 21112
REBL FIVE DEPARTURE (RNAV)

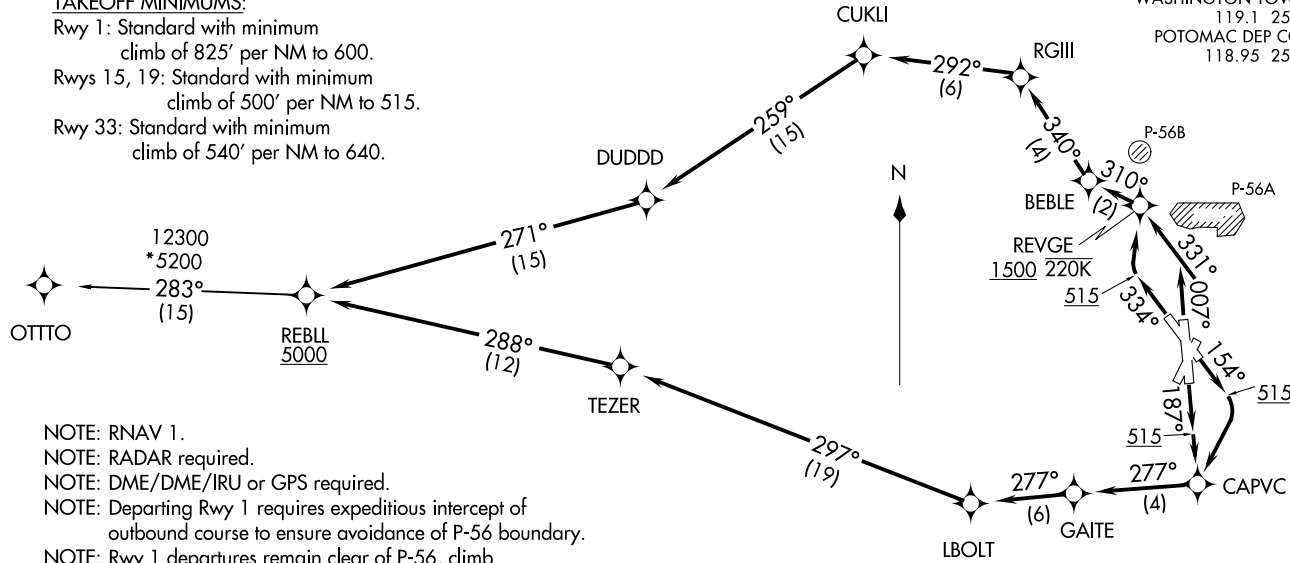
AL-443 (FAA)
 RONALD REAGAN WASHINGTON NTL (DCA)
 WASHINGTON, DC

D-ATIS
 132.65
 CLNC DEL
 128.25
 CPDLC
 GND CON
 121.7 257.6
 WASHINGTON TOWER
 119.1 257.6
 POTOMAC DEP CON
 118.95 257.2

**TOP ALTITUDE:
 5000**

TAKEOFF MINIMUMS:

Rwy 1: Standard with minimum
 climb of 825' per NM to 600.
 Rwys 15, 19: Standard with minimum
 climb of 500' per NM to 515.
 Rwy 33: Standard with minimum
 climb of 540' per NM to 640.



- NOTE: RNAV 1.
 NOTE: RADAR required.
 NOTE: DME/DME/IRU or GPS required.
 NOTE: Departing Rwy 1 requires expeditious intercept of
 outbound course to ensure avoidance of P-56 boundary.
 NOTE: Rwy 1 departures remain clear of P-56, climb
 heading 007°, turn left as soon as practical to
 intercept course 331° to REVGE.
 NOTE: Pilots shall comply with Ronald Reagan Washington
 Ntl Airport noise abatement and prohibited
 area (P-56) avoidance procedures as defined in
 the Chart Supplement Special Notices.
 NOTE: Turbo-jets only.

(NARRATIVE ON FOLLOWING PAGE)

NOTE: Chart not to scale.

REBL FIVE DEPARTURE (RNAV)
 (REBL5, REBL) 31DEC20

WASHINGTON, DC
 RONALD REAGAN WASHINGTON NTL (DCA)

DEPARTURE ROUTE DESCRIPTION	
<p>TAKEOFF RUNWAY 1: Climb on heading 007° to intercept course 331° to REVGE, cross REVGE at or above 1500 and at or below 220K, then on track 310° to BEBLE, then on track 340° to RGIII, then on track 292° to CUKLI, then on track 259° to DUDDD, then on track 271° to REBLL, cross REBLL at or above 5000, thence....</p> <p>TAKEOFF RUNWAY 15: Climb on heading 154° to 515, then right turn direct CAPVC, then on track 277° to GAITE, then on track 268 to LBOLT, then on track 297° to TEZER, then on track 288° to REBLL, cross REBLL at or above 5000, thence....</p> <p>TAKEOFF RUNWAY 19: Climb on heading 187° to 515, then direct CAPVC, then on track 277° to GAITE, then on track 277° to LBOLT, then on track 297° to TEZER, then on track 288° to REBLL, cross REBLL at or above 5000, thence....</p> <p>TAKEOFF RUNWAY 33: Climb on heading 334° to 515, then direct REVGE, cross REVGE at or above 1500 and at or below 220K, then on track 310° to BEBLE, then on track 340° to RGIII, then on track 292° to CUKLI, then on track 259° to DUDDD, then on track 271° to REBLL, cross REBLL at or above 5000, thence....</p> <p>....on OTTO transition. Maintain 5000. Expect filed altitude within ten (10) minutes after departure.</p> <p><u>OTTO TRANSITION (REBLL5.OTTO):</u></p>	

NE-3, 22 JAN 2026 to 19 FEB 2026

NE-3, 22 JAN 2026 to 19 FEB 2026