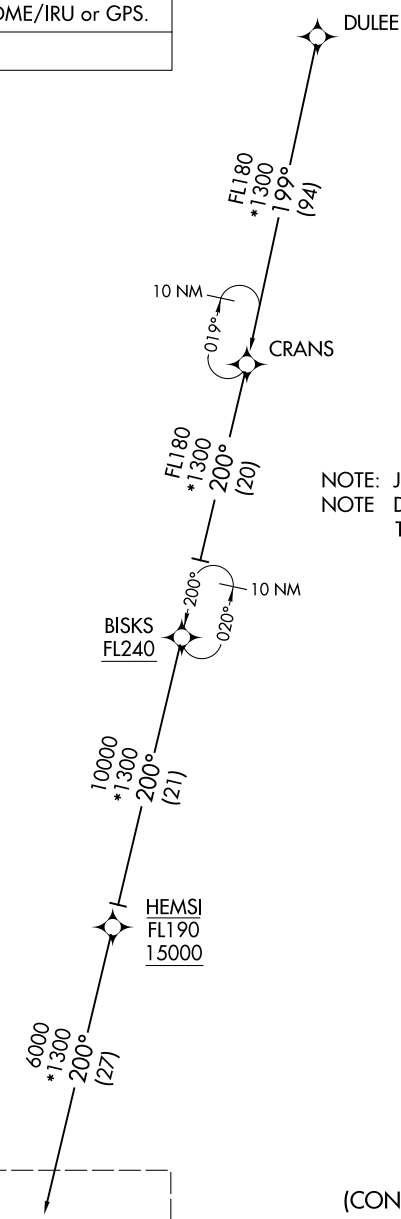


WEST PALM BEACH, FLORIDA

RADAR required.

PALM BEACH APP CON
124.6 317.4
F45 CTA
123.075
PBI D-ATIS
123.75



NOTE: Jet aircraft only.
NOTE Do not file CRANS, BSKS Transitions-
To be assigned by ATC

NOTE: Chart not to scale.

(CONTINUED ON FOLLOWING PAGE)

See following page
for arrival routes.

CLMNT	
<u>11000</u>	<u>250K</u>
9000	

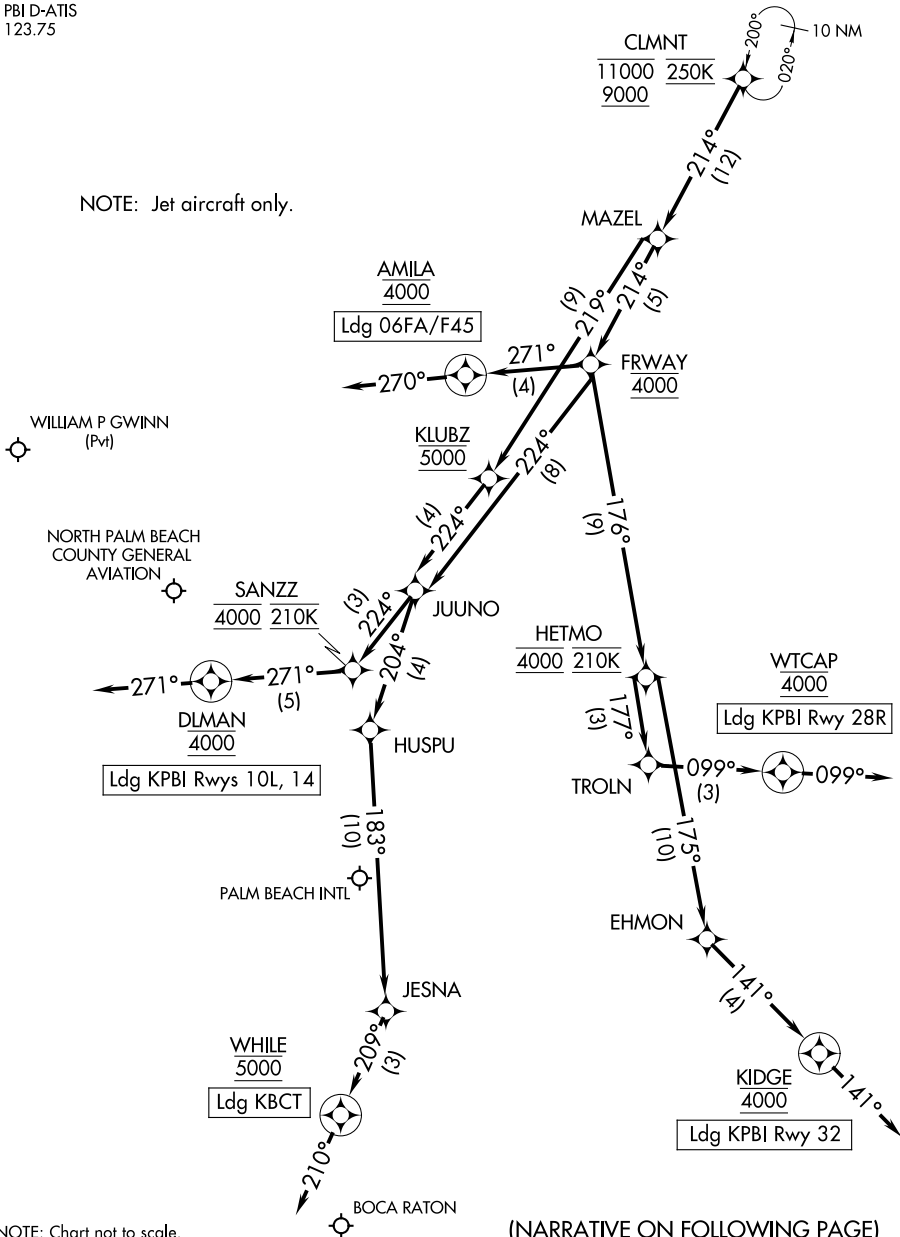
BISKS TRANSITION (BISKS.CLMNT2)
CRANS TRANSITION (CRANS.CLMNT2)
DULEE TRANSITION (DULEE.CLMNT2)

PALM BEACH APP CON
124.6 317.4
F45 CTAF
123.075
PBI D-ATIS
123.75

RNAV 1 - DME/DME/IRU or GPS.

RADAR required.

NOTE: Jet aircraft only.



NOTE: Chart not to scale.

(NARRATIVE ON FOLLOWING PAGE)

ARRIVAL ROUTE DESCRIPTION

KPBI: From CLMNT on track 214° to MAZEL.

LANDING KPBI RUNWAYS 10L, 14: From MAZEL on track 214° to cross FRWAY at 4000, then on track 224° to JUUNO, then on track 224° to cross SANZZ at 4000 and at 210K, then on track 271° to cross DLMAN at 4000, then on track 271°. Expect RADAR vectors to final approach course.

LANDING KPBI RUNWAY 28R: From MAZEL on track 214° to cross FRWAY at 4000, then on track 176° to cross HETMO at 4000 and at 210K, then on track 177° to TROLN, then on track 099° to cross WTCAP at 4000, then on track 099°. Expect RADAR vectors to final approach course.

LANDING KPBI RUNWAY 32: From MAZEL on track 214° to cross FRWAY at 4000, then on track 176° to cross HETMO at 4000 and at 210K, then on track 175° to EHMON, then on track 141° to cross KIDGE at 4000, then on track 141°. Expect RADAR vectors to final approach course.

LANDING 06FA/F45: From CLMNT on track 214° to MAZEL, then on track 214° to cross FRWAY at 4000, then on track 271° to cross AMILA at 4000, then on heading 270°. Expect RADAR vectors to final approach course.

LANDING KBCT: From CLMNT on track 214° to MAZEL, then on track 219° to cross KLUBZ at 5000, then on track 224° to JUUNO, then on track 204° to HUSPU, then on track 183° to JESNA, then on track 209° to cross WHILE at 5000, then on heading 210°. Expect RADAR vectors to final approach course.