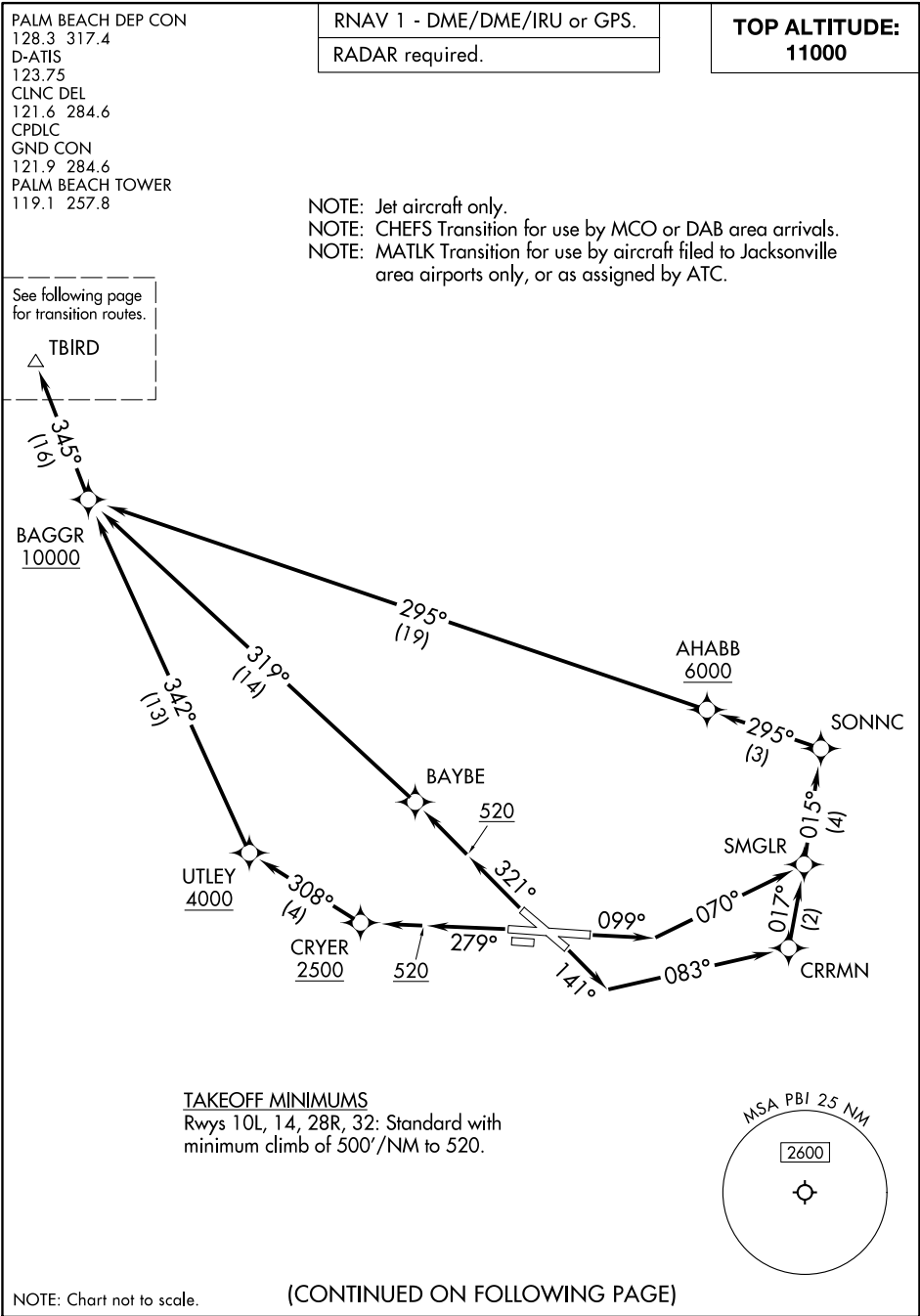


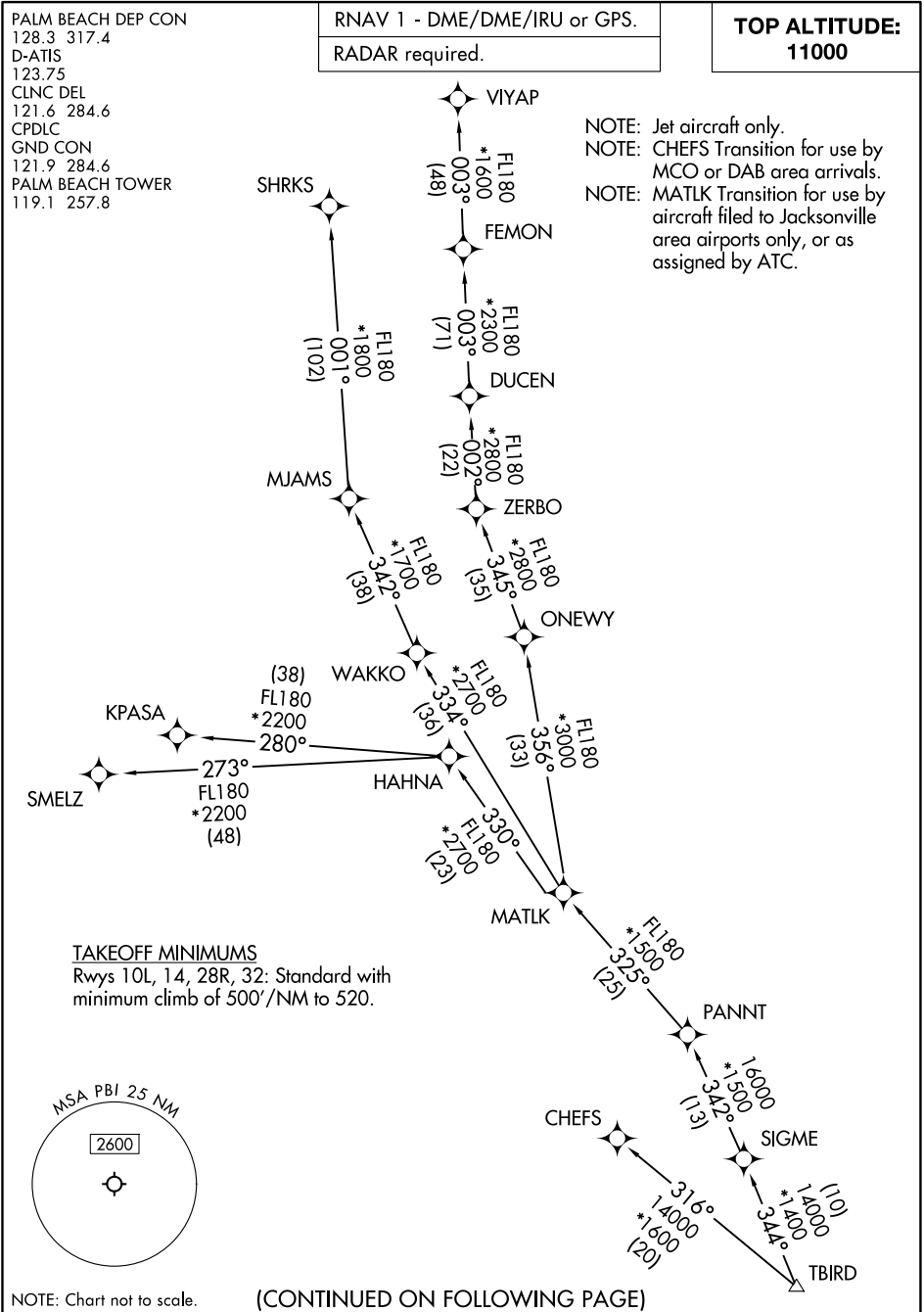
TBIRD SEVEN DEPARTURE (RNAV) Departure Routes

PALM BEACH INTL (PBI)
WEST PALM BEACH, FLORIDA



SE-3, 22 JAN 2026 to 19 FEB 2026

SE-3, 22 JAN 2026 to 19 FEB 2026





DEPARTURE ROUTE DESCRIPTION

TAKEOFF RUNWAY 10L: Climb on heading 099° to intercept course 070° to SMGLR, then on track 015° to SONNC, then on track 295° to cross AHABB at or above 6000, then on track 295° to cross BAGGR at or above 10000, thence. . .

TAKEOFF RUNWAY 14: Climb on heading 141° to intercept course 083° to CRRMN, then on track 017° to SMGLR, then on track 015° to SONNC, then on track 295° to cross AHABB at or above 6000, then on track 295° to cross BAGGR at or above 10000, thence. . .

TAKEOFF RUNWAY 28R: Climb on heading 279° to 520, then direct CRYER, cross CRYER at or above 2500, then on track 308° to cross UTLEY at or above 4000, then on track 342° to cross BAGGR at or above 10000, thence. . .

TAKEOFF RUNWAY 32: Climb on heading 321° to 520, then direct BAYBE, then on track 319° to cross BAGGR at or above 10000, thence. . .

. . .on track 345° to TBIRD, then on assigned transition, maintain 11000. Expect filed altitude 10 minutes after departure.

ALL AIRCRAFT: Climb gradients: If unable to accept climb rate advise ATC prior to departure. Runways 10L, 14, 28R, 32: 500'/NM to 520.

- CHEFS TRANSITION (TBIRD7.CHEFS)
- KPASA TRANSITION (TBIRD7.KPASA)
- MATLK TRANSITION (TBIRD7.MATLK)
- SHRKS TRANSITION (TBIRD7.SHRKS)
- SMELZ TRANSITION (TBIRD7.SMELZ)
- VIYAP TRANSITION (TBIRD7.VIYAP)