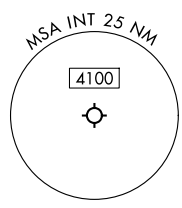
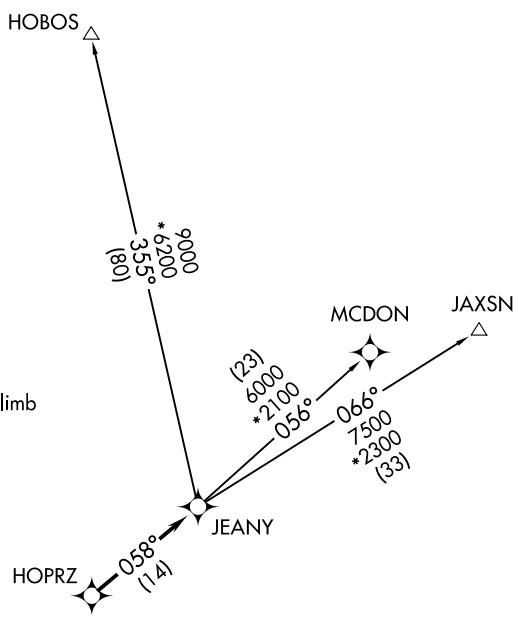


GREENSBORO DEP CON 124.35 269.225 ATIS 121.3 GND CON 128.25 WINSTON-SALEM TOWER ★ 123.75 257.8	RNAV 1 - DME/DME/IRU or GPS. RADAR required. For non-GPS equipped aircraft, LIB DME must be operational for HOBOS Transition.	TOP ALTITUDE: ASSIGNED BY ATC
---	--	----------------------------------

TAKEOFF MINIMUMS
Rwy 4, 15, 33: Standard.
Rwy 22: Standard with minimum climb
of 340' /NM to 1400.



NOTE: Chart not to scale.

▼

DEPARTURE ROUTE DESCRIPTION

TAKEOFF ALL RUNWAYS: Climb on assigned headings for vectors to HOPRZ, then on track 058° to JEANY, then on assigned transition. Maintain ATC assigned altitude, expect filed altitude 10 minutes after departure.

HOBOS TRANSITION (JEANY1 .HOBOS)

JAXSN TRANSITION (JEANY1 .JAXSN)

MCDON TRANSITION (JEANY1 .MCDON)