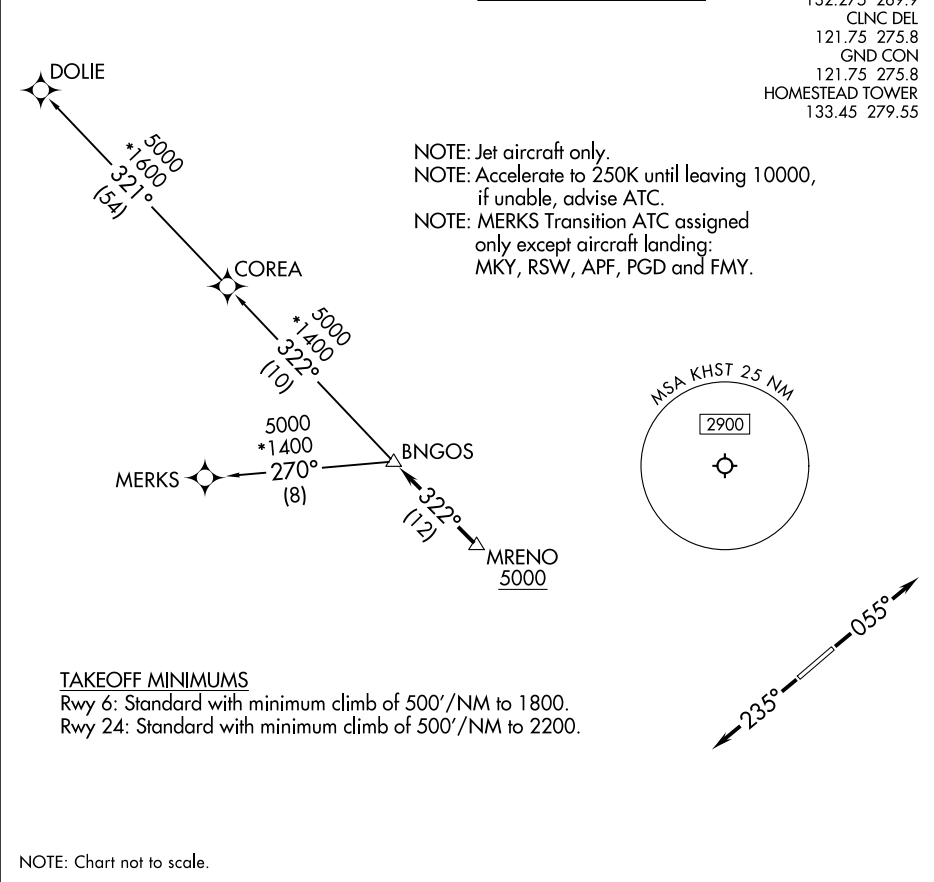


| | | |
|----------------------------|----------------------------------|---|
| RNAV-1 DME/DME/IRU or GPS. | TOP ALTITUDE: ASSIGNED BY ATC | MIAMI DEP CON 125.5 354.1 |
| RADAR required. | | ATIS* 132.275 269.9 CLNC DEL 121.75 275.8 GND CON 121.75 275.8 HOMESTEAD TOWER 133.45 279.55 |



| |
|--|
| <div><div>▼</div><div>DEPARTURE ROUTE DESCRIPTION</div></div> <div>TAKEOFF RUNWAY 6: Climb on heading 055° or as assigned by ATC for RADAR vectors to cross MRENO at or above 5000, thence. . . TAKEOFF RUNWAY 24: Climb on heading 235° or as assigned by ATC for RADAR vectors to cross MRENO at or above 5000, thence.on track 322° to BNGOS, then on assigned transition, maintain ATC assigned altitude, expect filed altitude within 10 minutes after departure. COREA TRANSITION (BNGOS4.COREA) DOLIE TRANSITION (BNGOS4.DOLIE) MERKS TRANSITION (BNGOS4.MERKS)</div> |
|--|