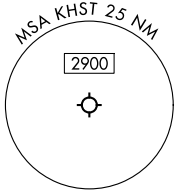


RNAV 1 - DME/DME/IRU or GPS.

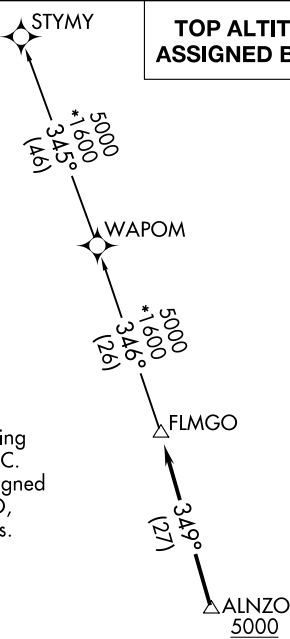
RADAR required.

TOP ALTITUDE:
ASSIGNED BY ATC

MIAMI DEP CON
125.5 354.1
ATIS*
132.275 269.9
CLNC DEL
121.75 275.8
GND CON
121.75 275.8
HOMESTEAD TOWER
133.45 279.55



- NOTE: Jet aircraft only.
- NOTE: Accelerate to 250K until leaving 10000, if unable, advise ATC.
- NOTE: WAPOM Transition ATC assigned except aircraft landing: MCO, DAB, and MLB terminal areas.

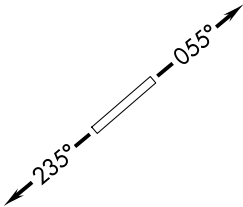


TAKEOFF MINIMUMS

Rwy 6: Standard with minimum climb of 500'/NM to 1800.

Rwy 24: Standard with minimum climb of 500'/NM to 2200.

NOTE: Chart not to scale.



DEPARTURE ROUTE DESCRIPTION

TAKEOFF RUNWAY 6: Climb on heading 055° or as assigned by ATC for RADAR vectors to cross ALNZO at or above 5000, thence. . . .

TAKEOFF RUNWAY 24: Climb on heading 235° or as assigned by ATC for RADAR vectors to cross ALNZO at or above 5000, thence. . . .

. . . on track 349° to FLMGO, then on assigned transition. Maintain ATC assigned altitude.

Expect filed altitude within 10 minutes after departure.

STYMY TRANSITION (FLMGO2.STYMY)

WAPOM TRANSITION (FLMGO2.WAPOM)