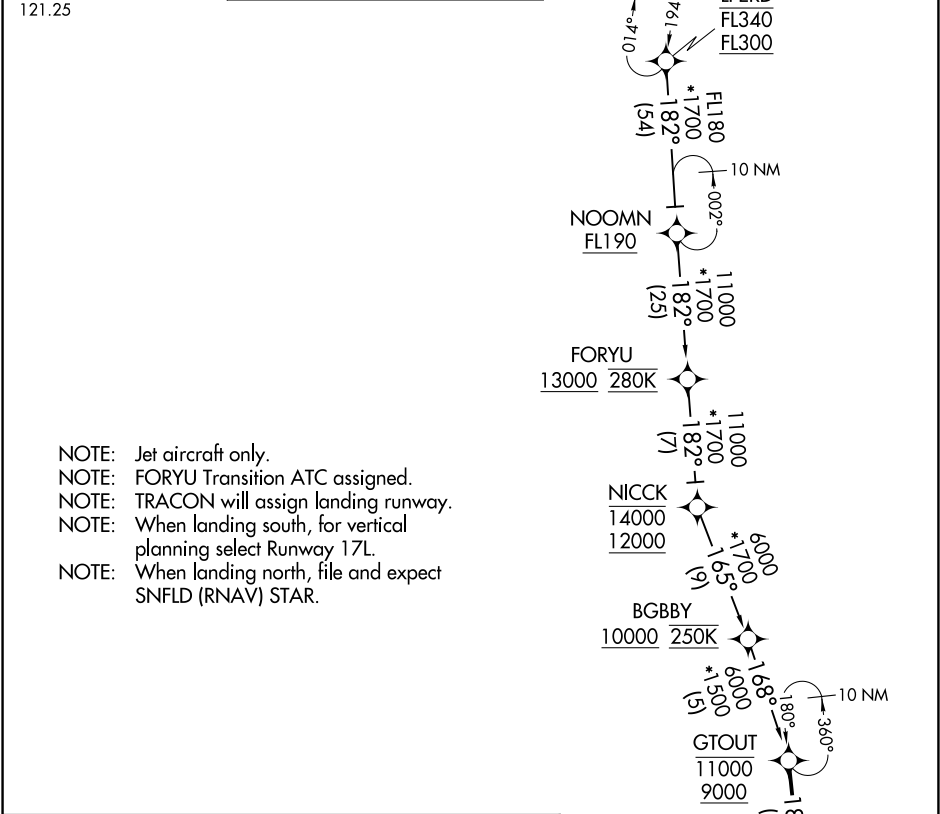


ORLANDO APP CON 128.375 338.2 MCO D-ATIS ARR 121.25	RNAV 1 - DME/DME/IRU or GPS. RADAR required.
--	---



ARRIVAL ROUTE DESCRIPTION

FORYU TRANSITION (FORYU.GTOUT1)

LPERD TRANSITION (LPERD.GTOUT1)

LANDING RUNWAYS 17L/R, 18L/R: From GTOUT on track 180° to TUGLE, then on track 221° to cross BANYA at 7000 and at 210K, then on heading 250° or as assigned by ATC.Expect RADAR vectors to final approach course.

LOST COMMUNICATIONS

MCO LANDING SOUTH: Continue track to BANYA, conduct Rwy 17L approach.

SE-3, 22 JAN 2026 to 19 FEB 2026

SE-3, 22 JAN 2026 to 19 FEB 2026