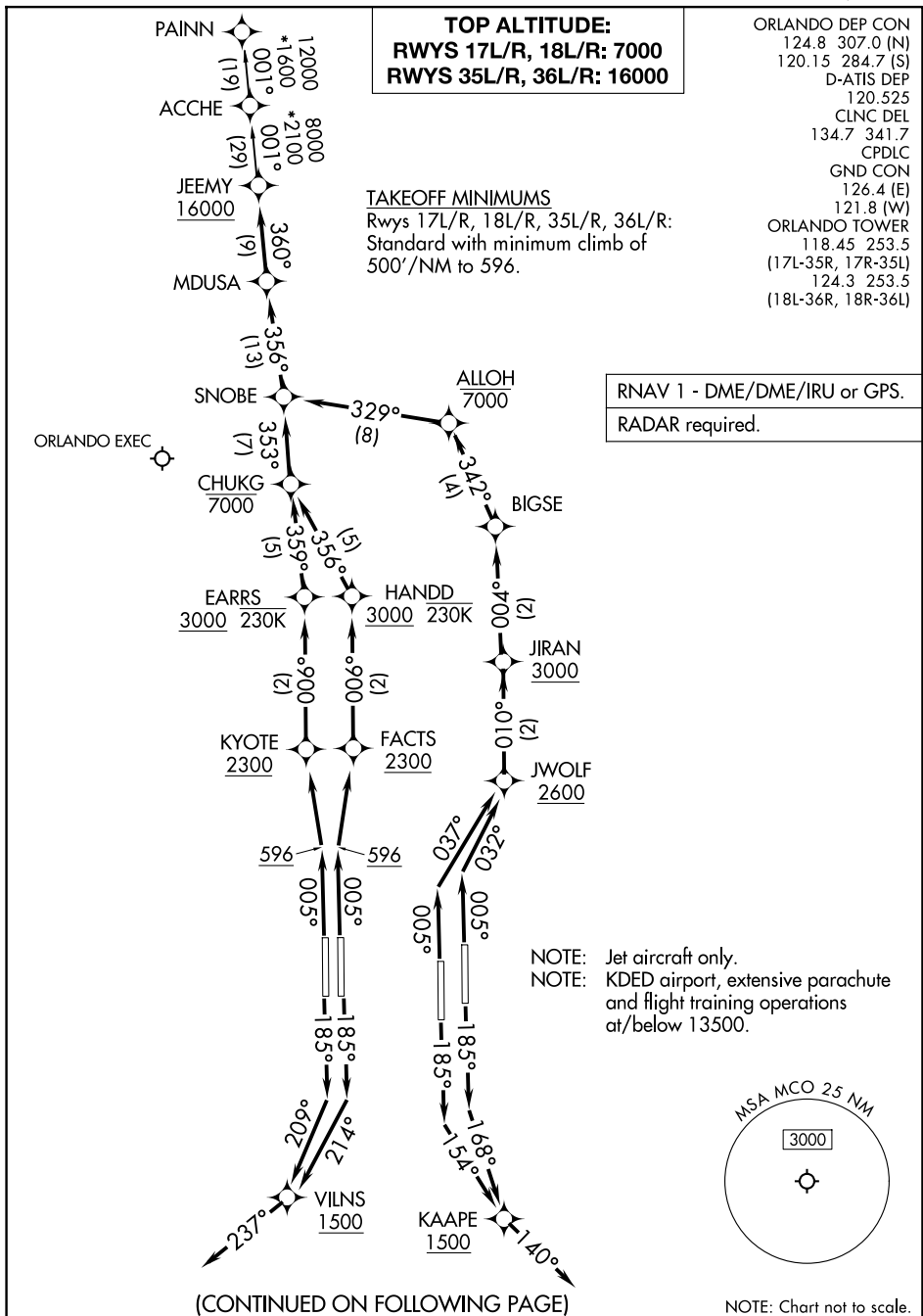


JEEMY FOUR DEPARTURE (RNAV)



JEEMY FOUR DEPARTURE (RNAV)

(JEEMY4.JEEMY) 12JUN25

ORLANDO, FLORIDA
ORLANDO INTL (MCO)

▼

DEPARTURE ROUTE DESCRIPTION
SEE ADDITIONAL REQUIREMENTS ON AAUP

TAKEOFF RUNWAY 17L: Climb on heading 185° to intercept course 168° to cross KAAPE at or above 1500, then on track 140°, for vectors to MDUSA, thence. . . .

TAKEOFF RUNWAY 17R: Climb on heading 185° to intercept course 154° to cross KAAPE at or above 1500, then on track 140°, for vectors to MDUSA, thence. . . .

TAKEOFF RUNWAY 18L: Climb on heading 185° to intercept course 214° to cross VILNS at or above 1500, then on track 237°, for vectors to MDUSA, thence. . . .

TAKEOFF RUNWAY 18R: Climb on heading 185° to intercept course 209° to cross VILNS at or above 1500, then on track 237°, for vectors to MDUSA, thence. . . .

TAKEOFF RUNWAY 35L: Climb on heading 005° to intercept course 037° to cross JWOLF at or above 2600, then on track 010° to cross JIRAN at or above 3000, then on track 004° to BIGSE, then on track 342° to cross ALOHH at or below 7000, then on track 329° to SNOBE, then on track 356° to MDUSA, thence. . . .

TAKEOFF RUNWAY 35R: Climb on heading 005° to intercept course 032° to cross JWOLF at or above 2600, then on track 010° to cross JIRAN at or above 3000, then on track 004° to BIGSE, then on track 342° to cross ALOHH at or below 7000, then on track 329° to SNOBE, then on track 356° to MDUSA, thence. . . .

TAKEOFF RUNWAY 36L: Climb on heading 005° to 596, then direct KYOTE at or above 2300, then on track 006° to cross EARRS at or above 3000 and at or below 230K, then on track 359° to cross CHUKG at or below 7000, then on track 353° to SNOBE, then on track 356° to MDUSA, thence. . . .

TAKEOFF RUNWAY 36R: Climb on heading 005° to 596, then direct FACTS at or above 2300, then on track 006° to cross HANDD at or above 3000 and at or below 230K, then on track 356° to cross CHUKG at or below 7000, then on track 353° to SNOBE, then on track 356° to MDUSA, thence. . . .

. . . then on track 360° to cross JEEMY at or above 16000, then on transition, RUNWAYS 17L/R, 18L/R maintain 7000, RUNWAYS 35L/R, 36L/R maintain 16000, expect filed altitude 10 minutes after departure.

ALL AIRCRAFT: ATC climb gradients: If unable to accept climb rates advise ATC prior to taxi. RUNWAY 35R: 548' /NM to 2600, RUNWAY 36L: 599' /NM to 2300, RUNWAY 36R: 589' /NM to 2300.

PAINN TRANSITION (JEEMY4.PAINN)

SE-3, 22 JAN 2026 to 19 FEB 2026

SE-3, 22 JAN 2026 to 19 FEB 2026