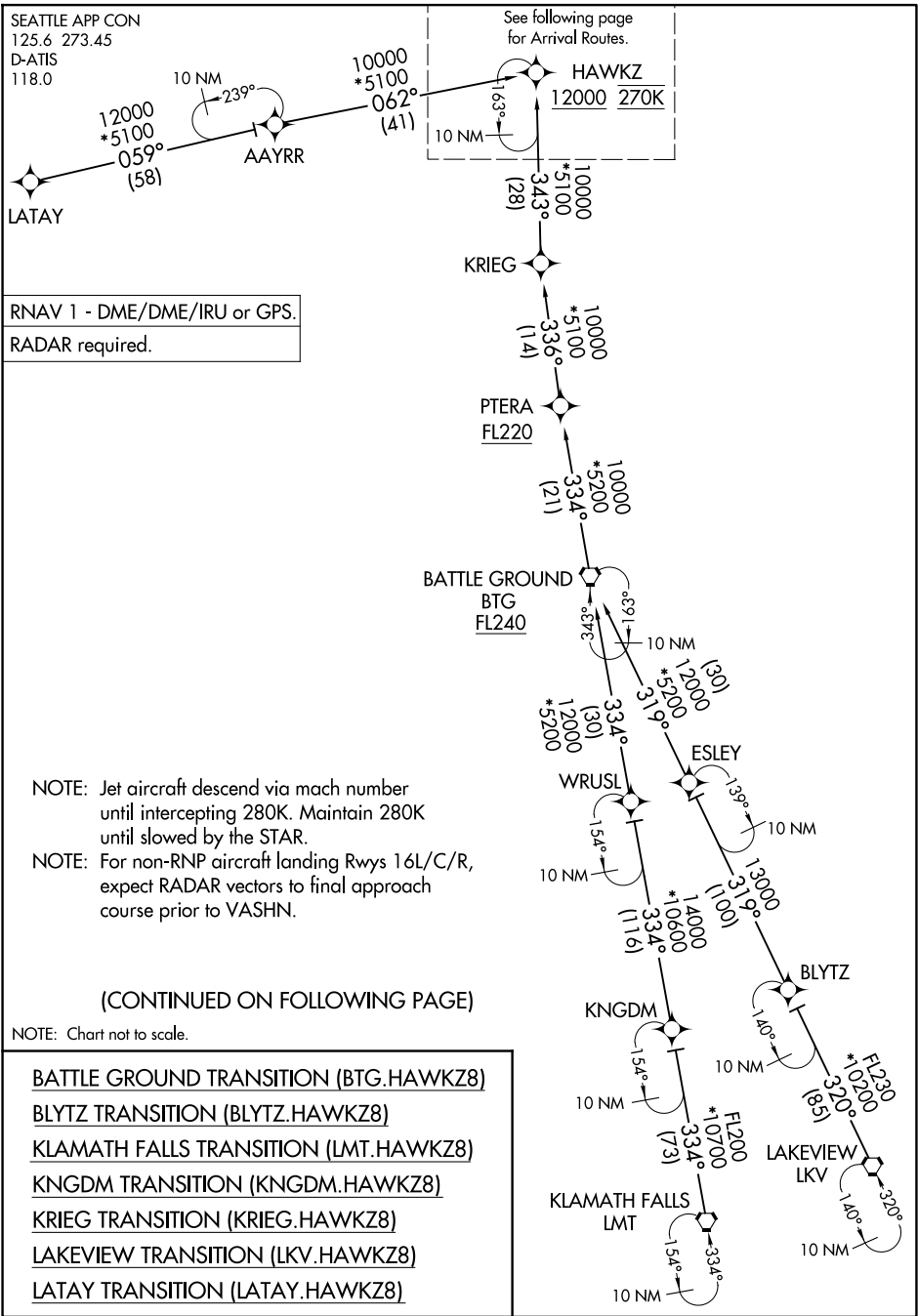


HAWKZ EIGHT ARRIVAL (RNAV) Transition Routes



NW-1, 22 JAN 2026 to 19 FEB 2026

NW-1, 22 JAN 2026 to 19 FEB 2026

HAWKZ EIGHT ARRIVAL (RNAV) Transition Routes

HAWKZ EIGHT ARRIVAL (RNAV) Arrival Routes

SEATTLE-TACOMA INTL (SEA)
SEATTLE, WASHINGTON

ARRIVAL ROUTE DESCRIPTION

From HAWKZ on track 023° to LIINE.

LANDING RUNWAYS 16L/C/R: From **LIINE** on track 022° to cross **PIKEZ** between 12000 and 15000 and at 250K, then on track 001° to **COFAY**, then on track 351° to cross **BREVE** between 10000 and 11000 and at 250K, then on track 350° to cross **NETTZ** at or above 8000 and at 230K, then on track 344° to cross **KWEST** at or above 7000, then on track 344° to cross **VASHN** at 6000 and at 210K, then on track 344°. Expect **RADAR** vectors for **RNAV** or **ILS** approach.

LANDING RUNWAYS 34L/C/R: From **LIINE** on track 027° to cross **FOOTT** between 10000 and 12000 and at 250K, then on track 030° to cross **GOALZ** at or above 9000 and at 230K, then on track 014° to cross **SONDR** at 6000 and at 230K. Expect RNAV or ILS approach.

LOST COMMUNICATIONS

LANDING RUNWAY 16: At VASHN, proceed to CRIFY and then on the ILS RWY 16R approach

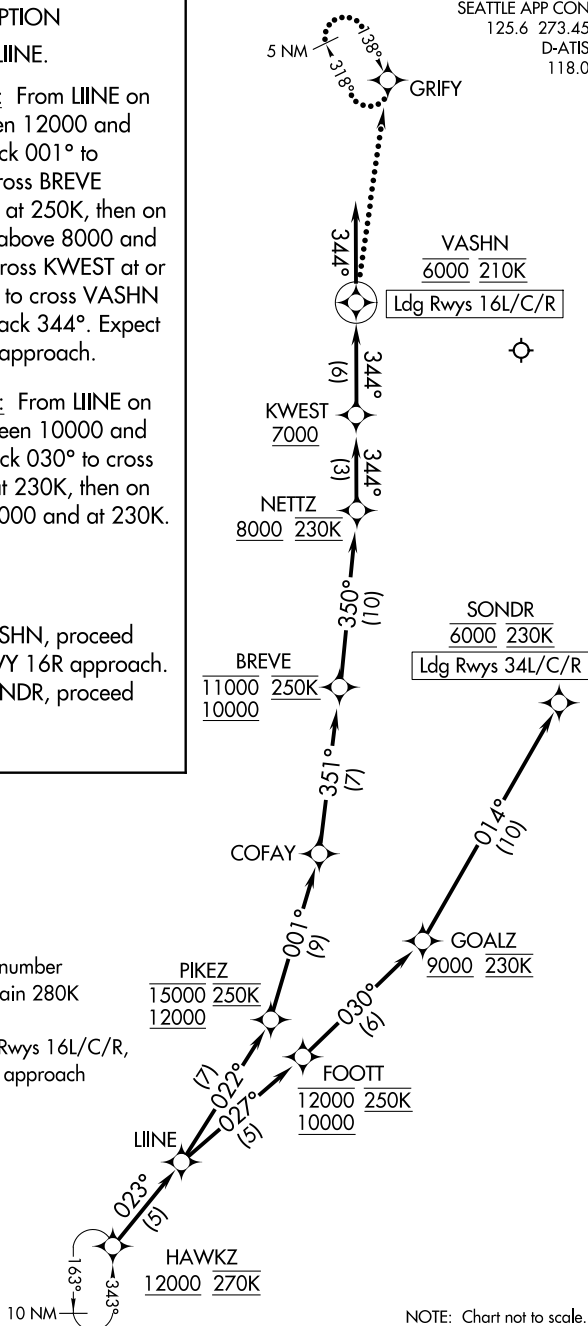
LANDING RUNWAY 34: At SONDR, proceed on the ILS RWY 34L approach.

RNAV 1 - DME/DME/IRU or GPS.

RADAR required.

NOTE: Jet aircraft descend via mach number until intercepting 280K. Maintain 280K until slowed by the STAR.

NOTE: For non-RNP aircraft landing Rwy 16L/C/R, expect RADAR vectors to final approach course prior to VASHN.



NOTE: Chart not to scale.

HAWKZ EIGHT ARRIVAL (RNAV) Arrival Routes

SEATTLE, WASHINGTON
SEATTLE-TACOMA INTL (SEA)

(HAWKZ.HAWKZ8) 05SEP24

NW-1, 22 JAN 2026 to 19 FEB 2026

NW-1, 22 JAN 2026 to 19 FEB 2026