

KRAKN ONE ARRIVAL (RNAV) Transition Routes

KEY WEST, FLORIDA

RNAV 1 - DME/DME/IRU or GPS.

RADAR required.

NAVY KEY WEST APP CON ★

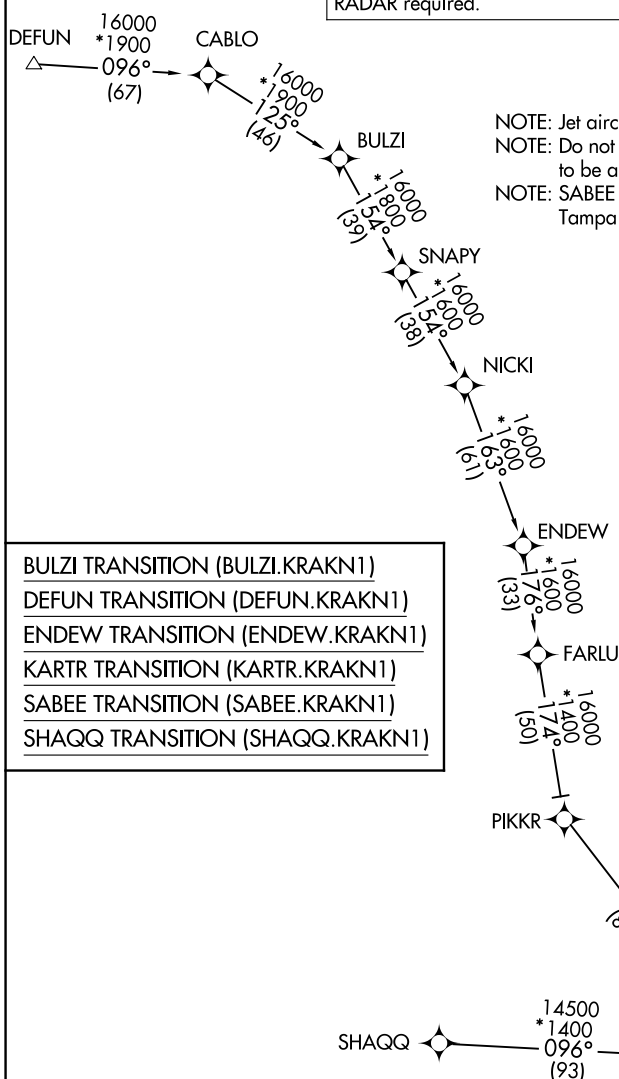
124.025 313.7

EYW ATIS

119.675

KNQX ATIS ★

307.025



NOTE: Jet aircraft only.

NOTE: Do not file ENDEW or KARTR Transitions -
to be assigned by ATC.

NOTE: SABEE Transition for traffic departing Tampa area only.

BULZI TRANSITION (BULZI.KRAKN1)
 DEFUN TRANSITION (DEFUN.KRAKN1)
 ENDEW TRANSITION (ENDEW.KRAKN1)
 KARTR TRANSITION (KARTR.KRAKN1)
 SABEE TRANSITION (SABEE.KRAKN1)
 SHAQQ TRANSITION (SHAQQ.KRAKN1)

NOTE: Chart not to scale. (CONTINUED ON FOLLOWING PAGE)

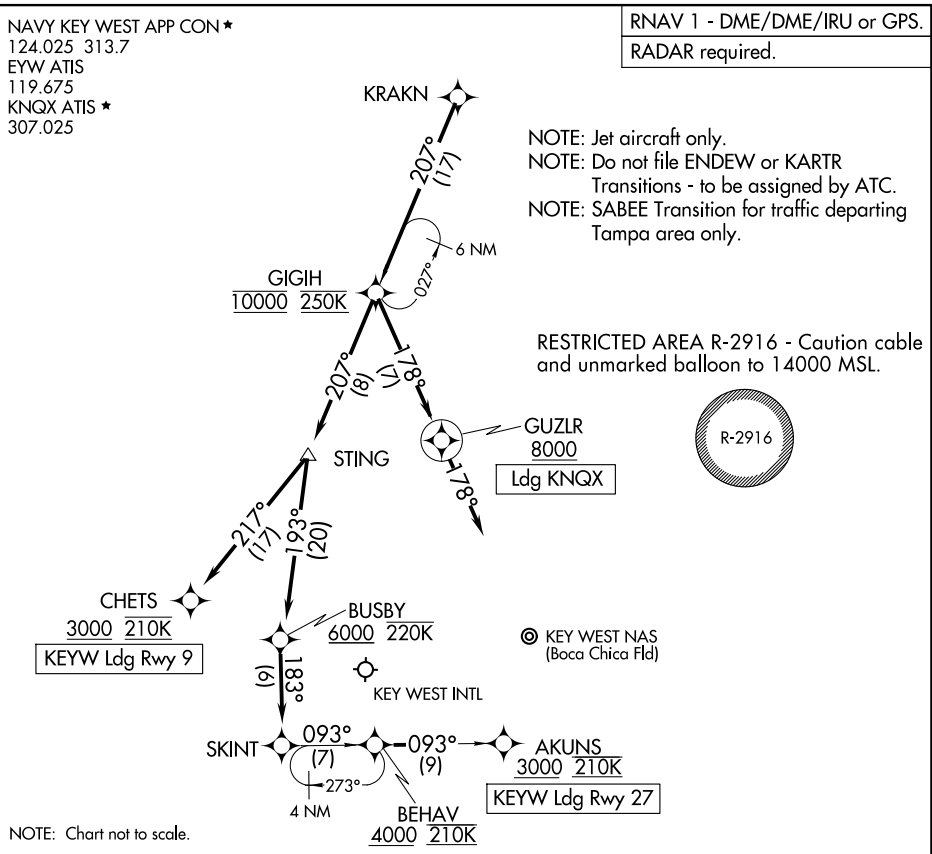
See following page
for arrival routes

KRAKN ONE ARRIVAL (RNAV) Transition Routes

(KRAKN.KRAKN1) 31OCT24

KEY WEST, FLORIDA

SE-3, 22 JAN 2026 to 19 FEB 2026



ARRIVAL ROUTE DESCRIPTION

KEYW: From KRAKN on track 207° to cross GIGIH at 10000 and at 250K, then on track 207° to STING.

LANDING KEYW RUNWAY 9: From STING on track 217° to cross CHETS at or above 3000 and at 210K. Expect RNAV (GPS) RWY 9 approach.

LANDING KEYW RUNWAY 27: From STING on track 193° to cross BUSBY at or above 6000 and at or below 220K, then on track 183° to SKINT, then on track 093° to cross BEHAV at or above 4000 and at 210K, then on track 093° to cross AKUNS at or above 3000 and at 210K. Expect RNAV (GPS) RWY 27 approach.

LANDING KNQX: From KRAKN on track 207° to cross GIGIH at 10000 and at 250 K, then on track 178° to cross GUZLR at or above 8000, then on track 178°. Expect RADAR vectors to final approach course.