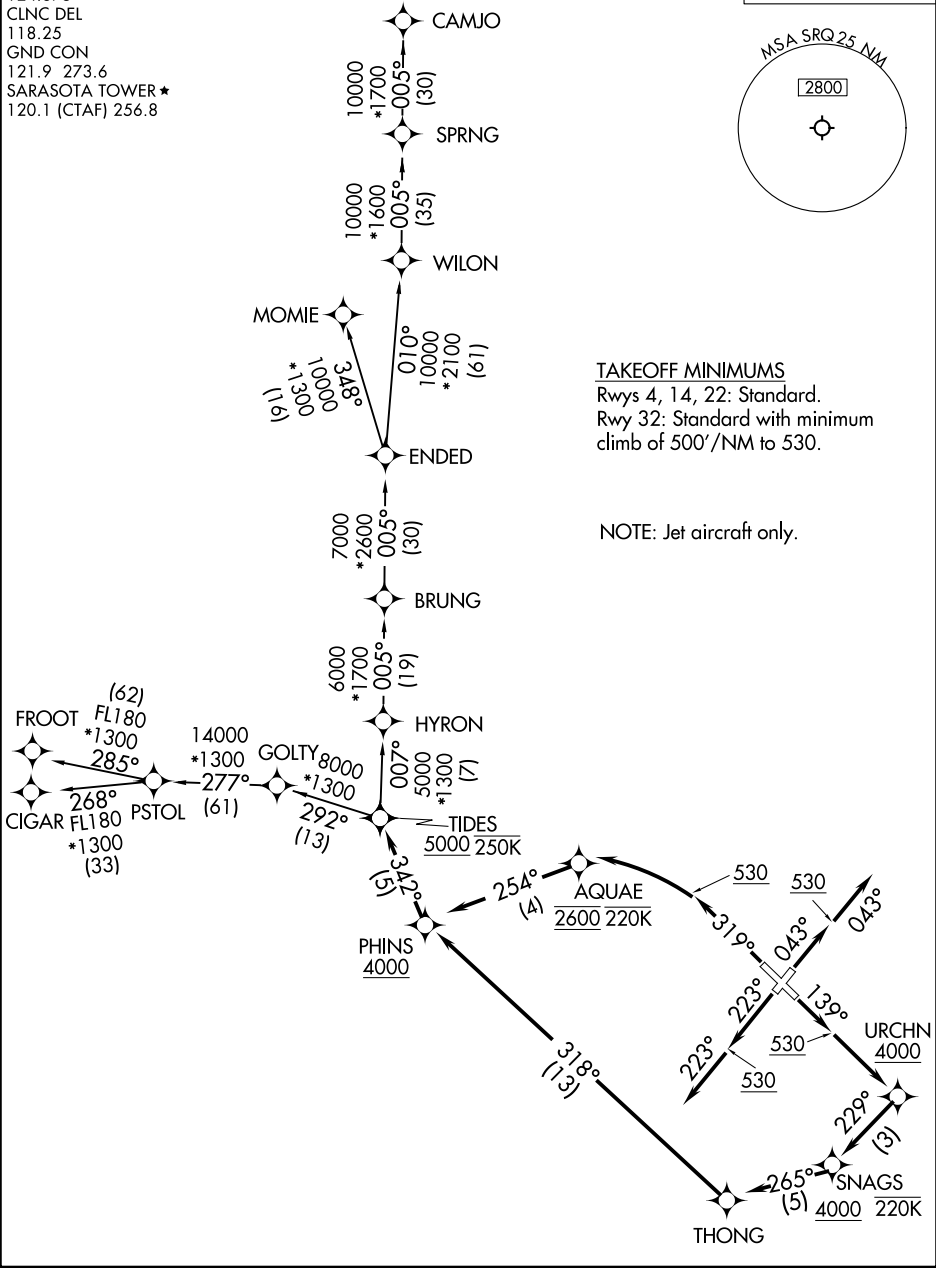


TAMPA DEP CON
119.65 353.575
ATIS
124.375
CLNC DEL
118.25
GND CON
121.9 273.6
SARASOTA TOWER ★
120.1 (CTAF) 256.8

RNAV 1 - DME/DME/IRU or GPS. From PSTOL - GPS.
RADAR required for non-GPS equipped aircraft.

TOP ALTITUDE:
5000





DEPARTURE ROUTE DESCRIPTION

TAKEOFF RUNWAY 4: Climb on heading 043° to 530, then on heading 043° or as assigned by ATC, for RADAR vectors to PHINS, thence. . . .

TAKEOFF RUNWAY 14: Climb on heading 139° to 530, then direct URCHN to cross at or above 4000, then on track 229° to cross SNAGS at or above 4000 and at or below 220K, then on track 265° to THONG, then on track 318° to cross PHINS at or above 4000, thence. . . .

TAKEOFF RUNWAY 22: Climb on heading 223° to 530, then on heading 223° or as assigned by ATC, for RADAR vectors to PHINS, thence. . . .

TAKEOFF RUNWAY 32: Climb on heading 319° to 530, then left turn direct AQUAE to cross at 2600 and at or below 220K, then on track 254° to cross PHINS at or above 4000, thence. . . .

. . . .on track 342° to cross TIDES at or above 5000 and at or below 250K, maintain 5000. Expect clearance to filed altitude within 10 minutes after departure.

- CAMJO TRANSITION (TIDES1.CAMJO)
- CIGAR TRANSITION (TIDES1.CIGAR)
- FROOT TRANSITION (TIDES1.FROOT)
- MOMIE TRANSITION (TIDES1.MOMIE)

SE-3, 22 JAN 2026 to 19 FEB 2026

SE-3, 22 JAN 2026 to 19 FEB 2026