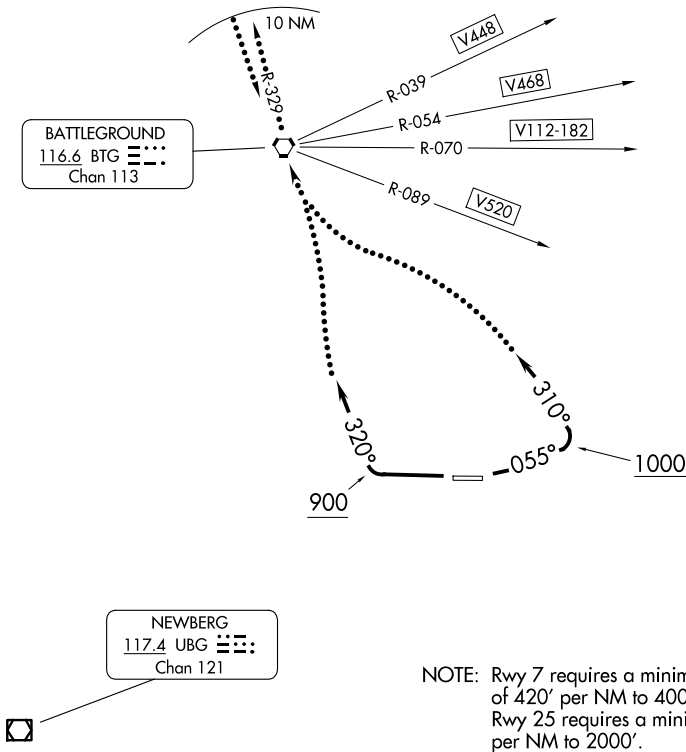


CTAF 120.9



NOTE: Chart not to scale.



DEPARTURE ROUTE DESCRIPTION

TAKEOFF RUNWAY 7: Climb via heading 055° to 1000', then turn left to 310° or as assigned.

TAKEOFF RUNWAY 25: Climb runway heading to 900', then turn right to 320° or as assigned.

LOST COMMUNICATIONS: Proceed direct to BTG VORTAC. Continue climb on the BTG R-329 within 10 NM to cross BTG VORTAC at or above: NE-bound V448, 9400'; NE-bound V468, 4500'; E-bound V112, V182, V520, 4700'; for non airways BTG R-355 CW BTG R-120, 8800'; all others, 2500'.

ALTERNATE LOST COMMUNICATIONS PROCEDURE: When BTG VORTAC is out of service: if no contact with ATC leaving 3000', continue climb to assigned altitude and proceed direct to UBG VOR/DME, thence via assigned route.

NW-1, 22 JAN 2026 to 19 FEB 2026

NW-1, 22 JAN 2026 to 19 FEB 2026