

SHASTA FOUR DEPARTURE

AL-688 (FAA)

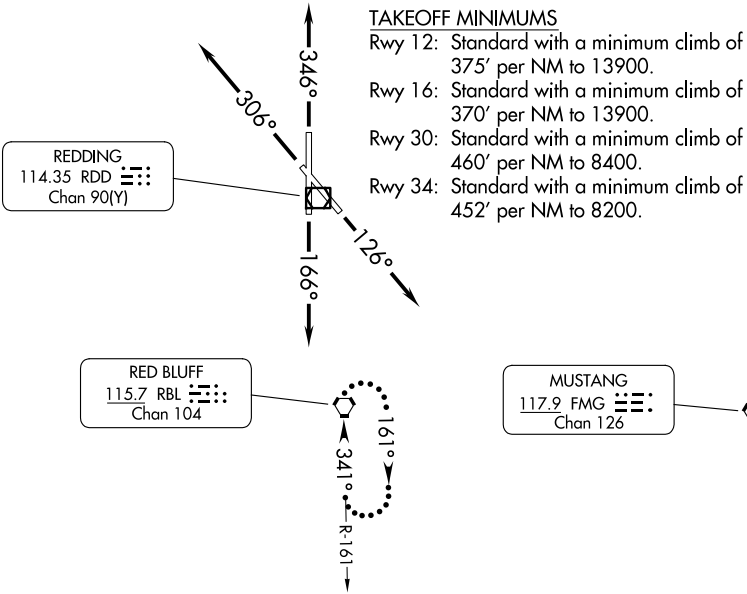
REDDING RGNL (RDD)  
REDDING, CALIFORNIA

OAKLAND CENTER  
132.2 350.3  
ATIS  
124.1  
GND CON  
121.7  
REDDING TOWER\*  
119.8 (CTAF) 269.25

TOP ALTITUDE:  
ASSIGNED BY ATC

FORT JONES  
116.25 FJS  
Chan 109(Y)

KLAMATH FALLS  
115.9 LMT  
Chan 106



DEPARTURE ROUTE DESCRIPTION

**TAKEOFF RUNWAY 12:** Climb heading 126° (or ATC assigned 344° CW 234°), thence . . .

**TAKEOFF RUNWAY 16:** Climb heading 166° (or ATC assigned 354° CW 234°), thence . . .

**TAKEOFF RUNWAY 30:** Climb heading 306° (or ATC assigned 134° CW 004°), thence . . .

**TAKEOFF RUNWAY 34:** Climb heading 346° (or ATC assigned 174° CW 004°), thence . . .

. . . . expect vectors to join assigned route. Maintain ATC assigned altitude; expect filed altitude/flight level ten minutes after departing.

**LOST COMMUNICATIONS:** If no contact with Oakland Center after reaching 4000 proceed to RBL VORTAC and hold.

NOTE: RADAR required.  
NOTE: Chart not to scale.

SHASTA FOUR DEPARTURE