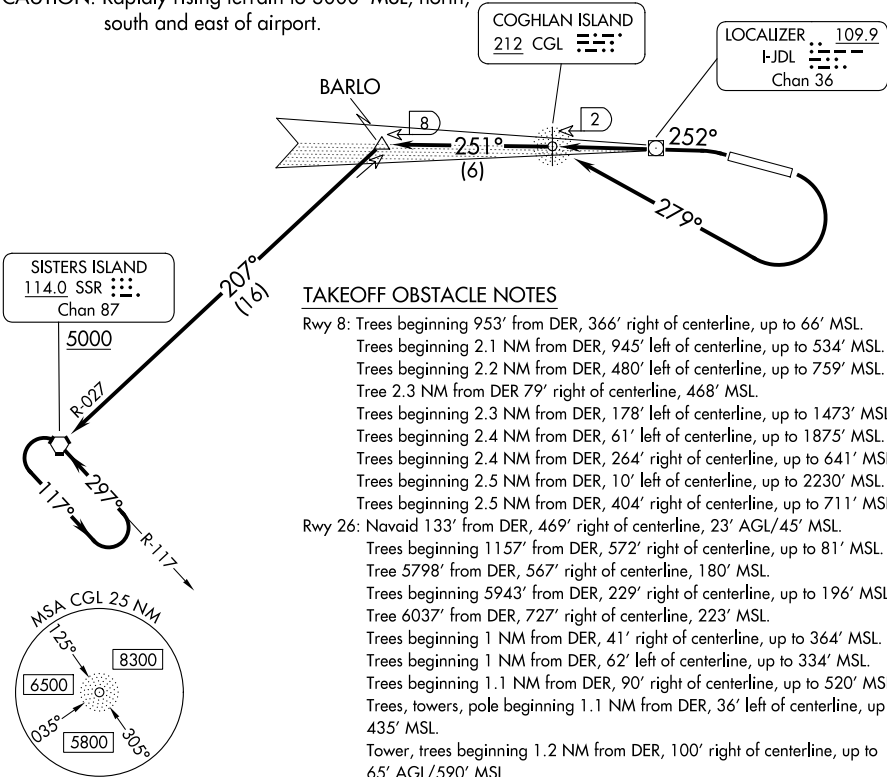


TAKEOFF MINIMUMS	ADF or DME required.	ANCHORAGE CENTER
Rwys 8W, 26W: NA- water runway.		133.9
Rwy 8: 1000-3.		ATIS
		135.2
Rwy 26: 600-17½ with minimum climb of 230'/NM to 800 or standard with minimum climb of 595 per NM to 800.		GND CON
		121.9
		JUNEAU TOWER ★
		118.7 (CTAF) 278.3
		JUNEAU RADIO
		122.2

NOTE: Obtain ATC approval for this procedure if not issued as part of the IFR clearance.

CAUTION: Rapidly rising terrain to 3000' MSL, north, south and east of airport.



TAKEOFF OBSTACLE NOTES

- Rwy 8: Trees beginning 953' from DER, 366' right of centerline, up to 66' MSL.
Trees beginning 2.1 NM from DER, 945' left of centerline, up to 534' MSL.
Trees beginning 2.2 NM from DER, 480' left of centerline, up to 759' MSL.
Tree 2.3 NM from DER 79' right of centerline, 468' MSL.
Trees beginning 2.3 NM from DER, 178' left of centerline, up to 1473' MSL.
Trees beginning 2.4 NM from DER, 61' left of centerline, up to 1875' MSL.
Trees beginning 2.4 NM from DER, 264' right of centerline, up to 641' MSL.
Trees beginning 2.5 NM from DER, 10' left of centerline, up to 2230' MSL.
Trees beginning 2.5 NM from DER, 404' right of centerline, up to 711' MSL.
- Rwy 26: Navaid 133' from DER, 469' right of centerline, 23' AGL/45' MSL.
Trees beginning 1157' from DER, 572' right of centerline, up to 81' MSL.
Tree 5798' from DER, 567' right of centerline, 180' MSL.
Trees beginning 5943' from DER, 229' right of centerline, up to 196' MSL.
Tree 6037' from DER, 727' right of centerline, 223' MSL.
Trees beginning 1 NM from DER, 41' right of centerline, up to 364' MSL.
Trees beginning 1 NM from DER, 62' left of centerline, up to 334' MSL.
Trees beginning 1.1 NM from DER, 90' right of centerline, up to 520' MSL.
Trees, towers, pole beginning 1.1 NM from DER, 36' left of centerline, up to 435' MSL.
Tower, trees beginning 1.2 NM from DER, 100' right of centerline, up to 65' AGL/590' MSL.
Tree 1.5 NM from DER, 2903' right of centerline, 359' MSL.

DEPARTURE ROUTE DESCRIPTION

TAKEOFF RUNWAY 8: Climbing right turn as soon as practical. Climb in visual conditions direct CGL NDB or heading 279° to I-JDL west course/2 DME (visual conditions must be maintained from takeoff until established over CGL NDB or I-JDL west course/2 DME at or above 1000 MSL), thence. . . .

TAKEOFF RUNWAY 26: Climbing left turn heading 252° to CGL NDB or I-JDL West course/2 DME, thence. . . .

. . . on I-JDL west course of 251° bearing from CGL NDB to BARLO /I-JDL 8 DME, then left turn on SSR VORTAC R-027 to SSR VORTAC, cross SSR VORTAC at or above 5000, continue climb in holding pattern to cross SSR VORTAC at or above MEA for route of flight.