
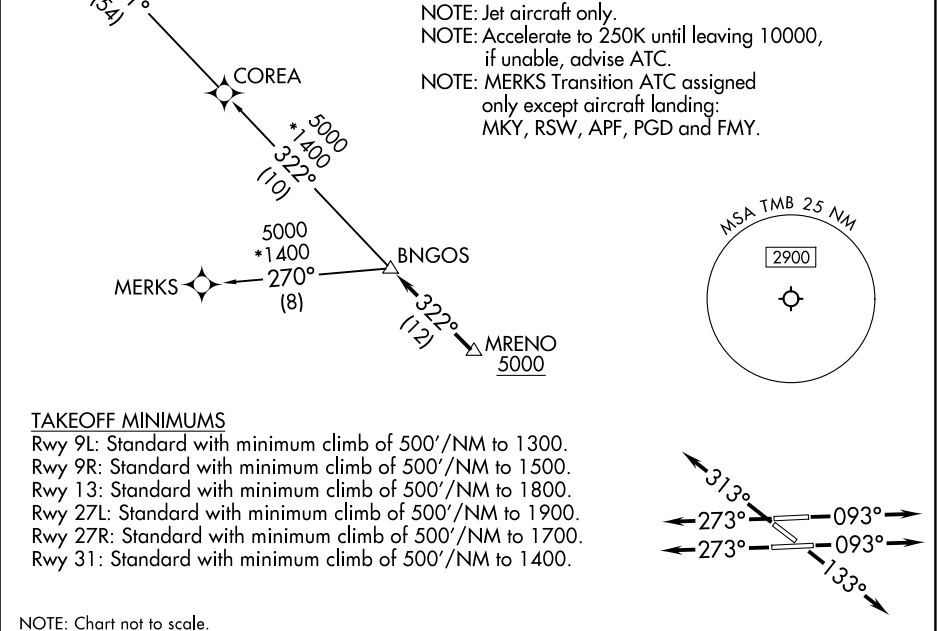


| | | |
|----------------------------|----------------------------------|---|
| RNAV-1 DME/DME/IRU or GPS. | TOP ALTITUDE: ASSIGNED BY ATC | MIAMI DEP CON 125.5 354.1 ATIS 124.0 CLNC DEL 133.0 GND CON 121.7 MIAMI EXEC TOWER★ 118.9 (CTAF) |
| RADAR required. | | |



DOLIE

5000
* 166



| |
|---|
| <div><div>▼</div><div>DEPARTURE ROUTE DESCRIPTION</div><div><p><u>TAKEOFF RUNWAYS 9L/R:</u> Climb on heading 093° or as assigned by ATC for RADAR vectors to cross MRENO at or above 5000, thence. . .</p><p><u>TAKEOFF RUNWAY 13:</u> Climb on heading 133° or as assigned by ATC for RADAR vectors to cross MRENO at 5000, thence. . .</p><p><u>TAKEOFF RUNWAYS 27L/R:</u> Climb on heading 273° or as assigned by ATC for RADAR vectors to cross MRENO at or above 5000, thence. . .</p><p><u>TAKEOFF RUNWAY 31:</u> Climb on heading 313° or as assigned by ATC for RADAR vectors to cross MRENO at or above 5000, thence. . .</p><p>. . . on track 322° to BNGOS, then on assigned transition, maintain ATC assigned altitude, expect filed altitude within 10 minutes after departure.</p><p><u>COREA TRANSITION (BNGOS4.COREA)</u> <u>DOLIE TRANSITION (BNGOS4.DOLIE)</u> <u>MERKS TRANSITION (BNGOS4.MERKS)</u></p></div></div> |
|---|