

**TOP ALTITUDE:
AS ASSIGNED BY ATC**

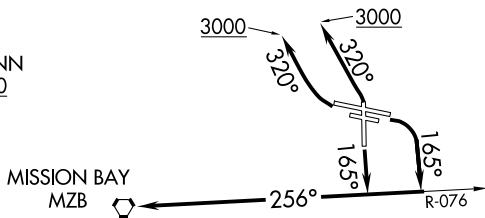
ATIS		
125.45		
GILLESPIE TOWER ★		
120.7	257.8	
SOCAL DEP CON		
119.6	363.1	

TAKEOFF MINIMUMS

Rwy 9L : 900-2¾ with minimum climb of 400' per NM to 3600.
 Rwy 9R : 900-2¾ with minimum climb of 405' per NM to 3600.
 Rwy 17 : Standard with minimum climb of 480' per NM to 2200.
 Rwy 27L : Standard with minimum climb of 320' per NM to 1200.
 Rwy 27R : Standard with minimum climb of 420' per NM to 1200.
 Rwy 35 : Standard with minimum climb of 400' per NM to 1600.

NOTE: RADAR required.
NOTE: RNAV 1.
NOTE: GPS or DME/DME/IRU required.
NOTE: Turbojet and turboprop only.
NOTE: Tower En Route control only.

NOTE: Chart not to scale.



DEPARTURE ROUTE DESCRIPTION

TAKEOFF RUNWAYS 9L/R: Climbing right turn heading 165° and on MZB R-076 to MZB VORTAC to 3000, expect vectors to cross GYWNN at or above 6000, then on track 308° to PADRZ, then on track 337° to cross CWARD at or below 12000, thence. . .

TAKEOFF RUNWAY 17: Climb heading 165° and MZB R-076 to MZB VORTAC to 2800, expect vectors to cross GYWNN at or above 6000, then on track 308° to PADRZ, then on track 337° to cross CWARD at or below 12000. thence. . .

TAKEOFF RUNWAYS 27L/R: Climbing right turn heading 320° to 3000, expect vectors to cross GYWNN at or above 6000, then on track 308° to PADRZ, then on track 337° to cross CWARD at or below 12000, thence. . . .

TAKEOFF RUNWAY 35: Climbing left turn heading 320° to 3000, expect vectors to cross GYWNN at or above 6000, then on track 308° to PADRZ, then on track 337° to cross CWARD at or below 12000, thence. . . .

...on transition. Maintain ATC assigned altitude. Expect filed altitude 10 minutes after departure.

LOS ANGELES TRANSITION (CWARD2.LAX)

SEAL BEACH TRANSITION (CWARD2.SLI)