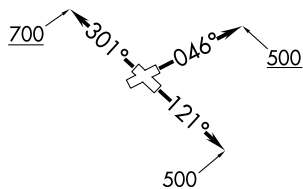


(AEX3.AEX) 070C121

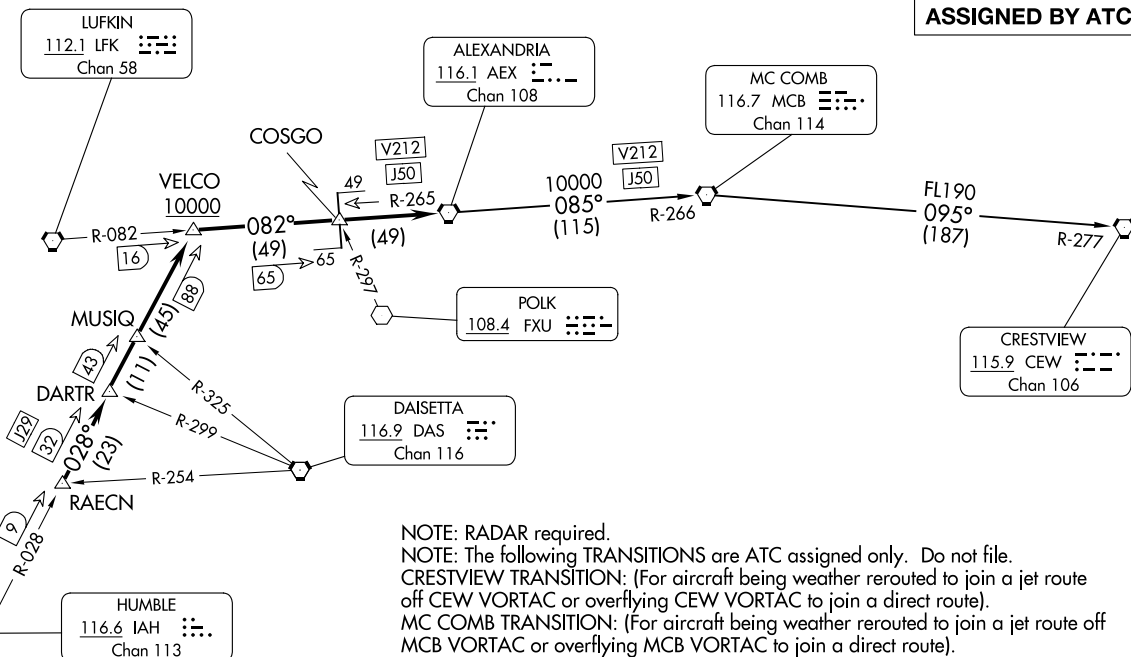
ALEXANDRIA THREE DEPARTURE

LA PORTE, TEXAS
LA PORTE MUNI (T41)

HOUSTON DEP CON
134.45 284.0
CLNIC DEL
125.6
CTAF
122.7



NOTE: Chart not to scale.



TAKEOFF MINIMUMS

Rwys 5, 12, 23, 30: Standard.

(CONTINUED ON FOLLOWING PAGE)

(AEX3.AEX) 25331
ALEXANDRIA THREE DEPARTURE

AL-5433 (FAA)

LA PORTE MUNI (T41)
LA PORTE, TEXAS



DEPARTURE ROUTE DESCRIPTION

TAKEOFF RUNWAY 5: Climb on heading 046° to 500 before turning. When entering controlled airspace, climb on assigned heading for RADAR vectors to RAECN INT. Maintain ATC assigned altitude. Expect filed altitude 10 minutes after departure, thence. . . .

TAKEOFF RUNWAY 12: Climb on heading 121° to 500 before turning. When entering controlled airspace, climb on assigned heading for RADAR vectors to RAECN INT. Maintain ATC assigned altitude. Expect filed altitude 10 minutes after departure, thence. . . .

TAKEOFF RUNWAY 23: When entering controlled airspace, climb on assigned heading for RADAR vectors to RAECN INT. Maintain ATC assigned altitude. Expect filed altitude 10 minutes after departure, thence. . . .

TAKEOFF RUNWAY 30: Climb on heading 301° to 700 before turning. When entering controlled airspace, climb on assigned heading for RADAR vectors to RAECN INT. Maintain ATC assigned altitude. Expect filed altitude 10 minutes after departure, thence. . . .

. . . .on IAH R-028 to VELCO INT, cross VELCO INT at or above 10000, then right turn on LFK R-082 and AEX R-265 to AEX VORTAC.

CRESTVIEW TRANSITION (AEX3.CEW): From over AEX VORTAC on AEX R-085 and MCB R-266 to MCB VORTAC, then on MCB R-095 and CEW R-277 to CEW VORTAC.

MC COMB TRANSITION (AEX3.MCB): From over AEX VORTAC on AEX R-085 and MCB R-266 to MCB VORTAC.

SC-5, 22 JAN 2026 to 19 FEB 2026

SC-5, 22 JAN 2026 to 19 FEB 2026