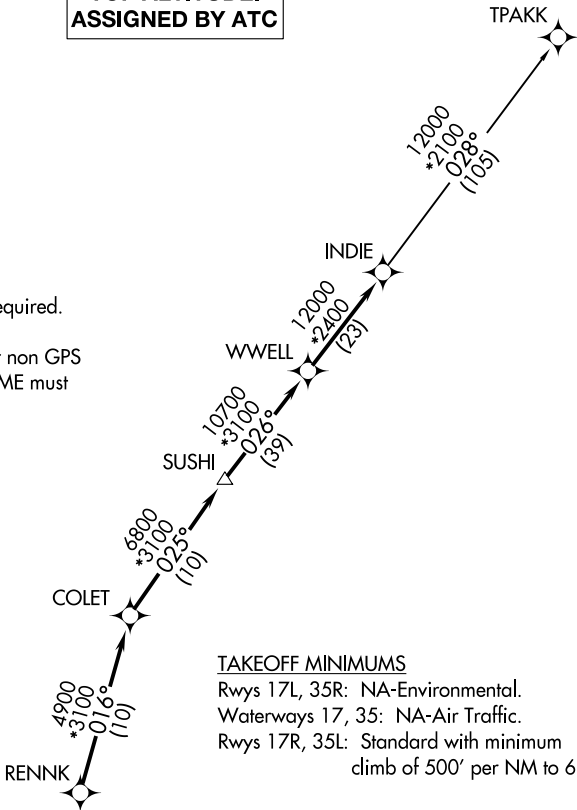


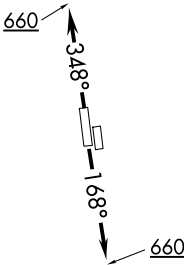
ATIS
128.375
CLNC DEL
119.45
GND CON
121.8 239.0
HOOKS TOWER ★
127.4 354.1 (EAST)
118.4 (CTAF) 354.1 (WEST)
HOUSTON DEP CON
119.7 281.4

TOP ALTITUDE:
ASSIGNED BY ATC

- NOTE: RADAR required.
NOTE: DME/DME/IRU or GPS required.
NOTE: RNAV 1.
NOTE: TPAKK TRANSITION: For non GPS
equipped aircraft TNV DME must
be operational.



TAKEOFF MINIMUMS
Rwys 17L, 35R: NA-Environmental.
Waterways 17, 35: NA-Air Traffic.
Rwys 17R, 35L: Standard with minimum
climb of 500' per NM to 660.



DEPARTURE ROUTE DESCRIPTION

TAKEOFF RUNWAY 17R: Climb on heading 168° to 660
for RADAR vectors to RENNK, thence. . . .
TAKEOFF RUNWAY 35L: Climb on heading 348° to 660
for RADAR vectors to RENNK, thence. . . .

. . . .on track 016° to COLET, then on track 025° to
SUSHI, then on track 026° to WWELL, then on track
026° to INDIE, then on (transition). Maintain ATC
assigned altitude. Expect filed altitude 10 minutes
after departure.

TPAKK TRANSITION (INDIE8.TPAKK)

NOTE: Chart not to scale.