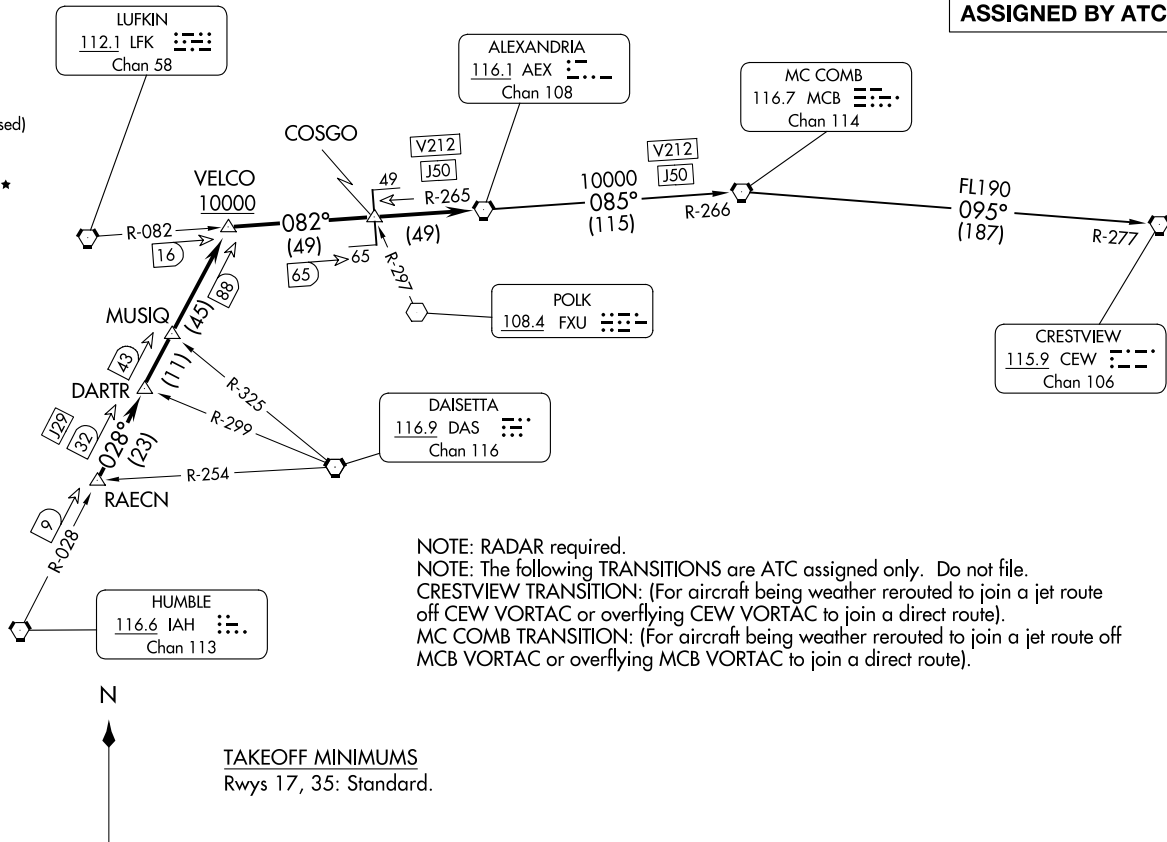


(AEX3.AEX) 25331  
ALEXANDRIA THREE DEPARTURE

AL-5537 (FAA)

SUGAR LAND RGNL (SGR)  
HOUSTON, TEXAS

**TOP ALTITUDE:  
ASSIGNED BY ATC**



NOTE: RADAR required.  
NOTE: The following TRANSITIONS are ATC assigned only. Do not file.  
CRESTVIEW TRANSITION: (For aircraft being weather rerouted to join a jet route off CEW VORTAC or overflying CEW VORTAC to join a direct route).  
MC COMB TRANSITION: (For aircraft being weather rerouted to join a jet route off MCB VORTAC or overflying MCB VORTAC to join a direct route).

TAKEOFF MINIMUMS  
Rwys 17, 35: Standard.

(CONTINUED ON FOLLOWING PAGE)

HOUSTON DEP CON  
123.8 257.7  
ATIS  
118.125  
CLNC DEL  
121.4  
CLNC DEL  
119.25 (When twr closed)  
GND CON  
121.4  
SUGARLAND TOWER ★  
118.65 (CTAF)

ALEXANDRIA THREE DEPARTURE

(AEX3.AEX) 070CT21

SUGAR LAND RGNL (SGR)  
HOUSTON, TEXAS



DEPARTURE ROUTE DESCRIPTION

TAKEOFF RUNWAY 17: Climb on heading 170° to 1500 before turning. When entering controlled airspace, climb on assigned heading for RADAR vectors to RAE CN INT. Maintain ATC assigned altitude. Expect filed altitude 10 minutes after departure, thence. . . .

TAKEOFF RUNWAY 35: Climb on heading 350° to 1100 before turning. When entering controlled airspace, climb on assigned heading for RADAR vectors to RAE CN INT. Maintain ATC assigned altitude. Expect filed altitude 10 minutes after departure, thence. . . .

. . . .on IAH R-028 to VELCO INT, cross VELCO INT at or above 10000, then right turn on LFK R-082 and AEX R-265 to AEX VORTAC.

CRESTVIEW TRANSITION (AEX3.CEW): From over AEX VORTAC on AEX R-085 and MCB R-266 to MCB VORTAC, then on MCB R-095 and CEW R-277 to CEW VORTAC.

MC COMB TRANSITION (AEX3.MCB): From over AEX VORTAC on AEX R-085 and MCB R-266 to MCB VORTAC.