

JACKSONVILLE APP CON
119.0 127.0 269.9 292.15 (270°-090°)
127.775 377.075 (181°-269°)
124.9 308.4 (091°-180°)
CRG ATIS 125.4
JAX D-ATIS 125.85
KNIP ATIS 124.35 290.425
KNRB ATIS ★ 236.775
SGJ ATIS 119.625
VQQ ATIS 125.275

ARRIVAL ROUTE DESCRIPTION

BASLE TRANSITION (BASLE.HOTAR1)

From JABOR on track 191° to HOTAR.
LANDING JAX: From HOTAR on track 263° to YEJWO.
Expect radar vectors to an ILS or LOC final approach course.
LANDING NRB and CRG: From HOTAR on track 210° to LESVE, then on 213° heading or as assigned by ATC.
Expect radar vectors to final approach course.
LANDING SGJ: From HOTAR on track 202° to HABIK, then on 203° heading or as assigned by ATC. Expect radar vectors to final approach course.
LANDING VQQ and NIP: From HOTAR on track 202° to HEBIN, then on 253° heading or as assigned by ATC.
Expect radar vectors to final approach course.

NOTE: YEJWO Transition-ATC assigned only.

JACKSONVILLE INTL

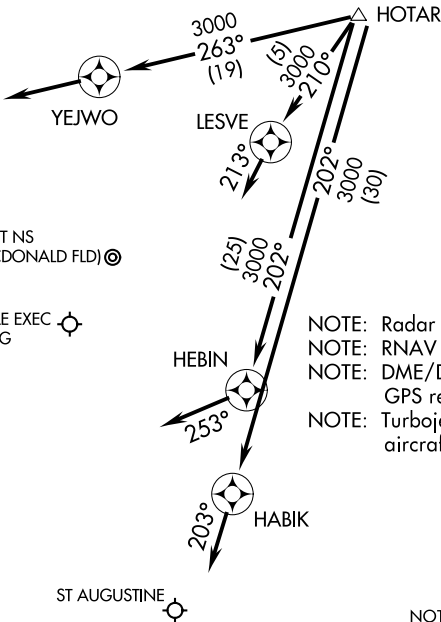
MAYPORT NS
(ADM DAVID L MCDONALD FLD)

JACKSONVILLE EXEC
AT CRAIG

JACKSONVILLE NAS
(TOWERS FLD)

CECIL

ST AUGUSTINE



NOTE: Radar required.
NOTE: RNAV 1.
NOTE: DME/DME/IRU or GPS required.
NOTE: Turbojet and turboprop aircraft only.