

CLVIN THREE DEPARTURE (RNAV)

AL-5642 (FAA)

CUSTER (TTF)  
MONROE, MICHIGAN

**TOP ALTITUDE:  
ASSIGNED BY ATC**

RNAV 1 - DME/DME/IRU or GPS.

RADAR required.

DETROIT DEP CON  
134.3 284.0  
AWOS-3  
119.075  
CTAF  
122.7

TAKEOFF MINIMUMS:  
Rwys 3, 21: Standard.

NOTE: Turbojet departures at/above 10000, maintain 280K until advised by ATC.

NOTE: Chart not to scale.

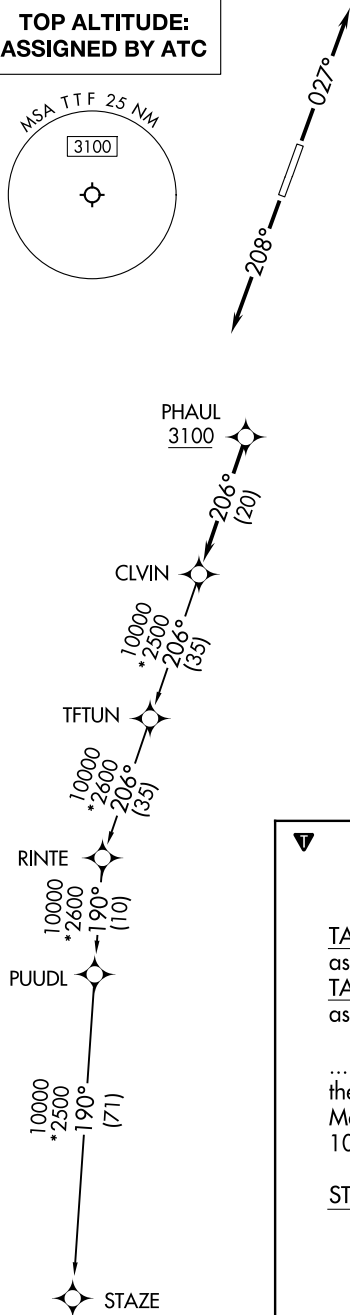
## DEPARTURE ROUTE DESCRIPTION

TAKEOFF RUNWAY 3: Climb on heading 027° or as assigned by ATC, thence....

**TAKEOFF RUNWAY 21:** Climb on heading 208° or as assigned by ATC, thence....

....for RADAR vectors to cross PHAUL at or above 3100,  
then on track 206° to CLVIN, then on (transition).  
Maintain ATC assigned altitude, expect filed altitude  
10 minutes after departure.

STAZE TRANSITION (CLVIN3.STAZE):

CLVIN THREE DEPARTURE (RNAV)  
(CLVIN3.CLVIN) 16MAY24

MONROE, MICHIGAN  
CUSTER (TTF)

EC-1, 22 JAN 2026 to 19 FEB 2026