

(BRNKO.BRNKO4) 17APR25

BRNKO FOUR ARRIVAL (RNAV) Transition Routes

DENVER, COLORADO

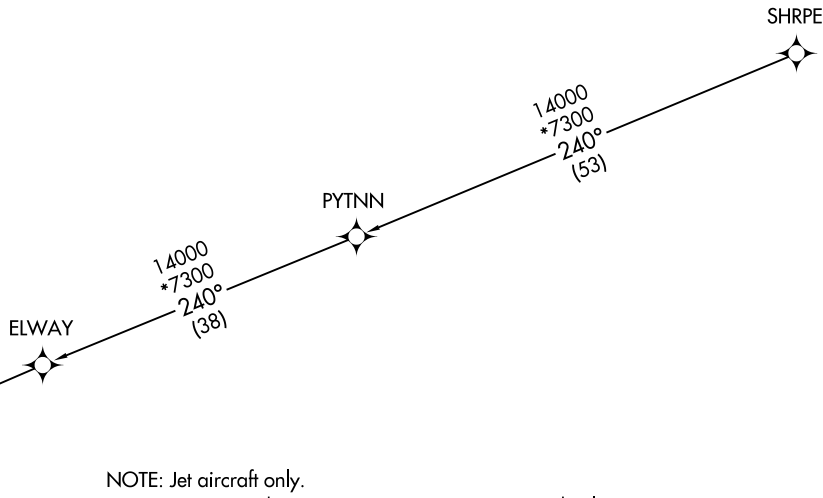
DENVER CENTER
133.4 377.175
DENVER APP CON
127.05 363.25
APA ATIS
120.3
BJC ATIS
126.25
FNL ATIS
135.075
CENTENNIAL TOWER
118.9
METRO TOWER ★
118.6 233.7



RNAV 1 - GPS.
RADAR required.

BRNKO
16000
14000

See following page
for arrival routes.



NOTE: Chart not to scale.

(CONTINUED ON FOLLOWING PAGE)

ELWAY TRANSITION (ELWAY.BRNKO4)
PYTNN TRANSITION (PYTNN.BRNKO4)
SHRPE TRANSITION (SHRPE.BRNKO4)

(BRNKO.BRNKO4) 25107

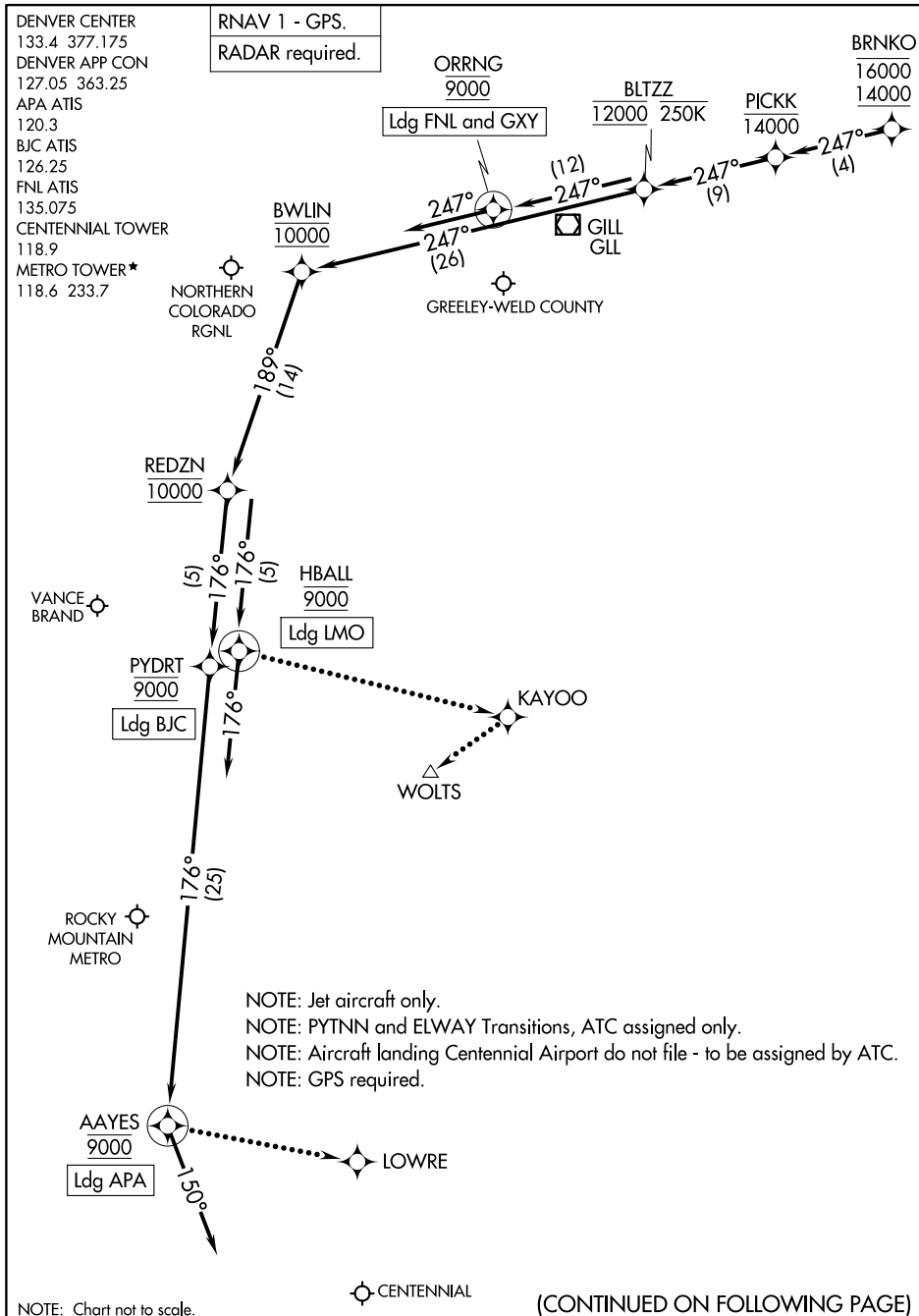
AL-571.5 (FAA)
Transition Routes

DENVER, COLORADO

AL-5715 (FAA)

BRNKO FOUR ARRIVAL (RNAV) Arrival Routes

DENVER, COLORADO



BRNKO FOUR ARRIVAL (RNAV) Arrival Routes

DENVER, COLORADO

(BRNKO.BRNKO4) 17APR25

SW-1, 22 JAN 2026 to 19 FEB 2026

ARRIVAL ROUTE DESCRIPTION

LANDING APA: From BRNKO on track 247° to cross PICKK at or below 14000, then on track 247° to cross BLTZZ at 12000 and at or below 250K, then on track 247° to cross BWLIN at 10000, then on track 189° to cross REDZN at 10000, then on track 176° to cross PYDRT at 9000, then on track 176° to cross AAYES at 9000, then on track 150°. Expect RADAR vectors to final approach course.

LANDING BJC: From BRNKO on track 247° to cross PICKK at or below 14000, then on track 247° to cross BLTZZ at 12000 and at or below 250K, then on track 247° to cross BWLIN at 10000, then on track 189° to cross REDZN at 10000, then on track 176° to cross PYDRT at 9000. Expect RNAV (GPS) RWY 12L approach.

LANDING FNL/GXY: From BRNKO on track 247° to cross PICKK at or below 14000, then on track 247° to cross BLTZZ at 12000 and at or below 250K , then on track 247° to cross ORRNG at 9000, then on track 247°. Expect RADAR vectors to final approach course.

LANDING LMO: From BRNKO on track 247° to cross PICKK at or below 14000, then on track 247° to cross BLTZZ at 12000 and at or below 250K, then on track 247° to cross BWLIN at 10000, then on track 189° to cross REDZN at 10000, then on track 176° to cross HBALL at 9000, then on track 176°. Expect RADAR vectors to final approach course.

LOST COMMUNICATIONS

LANDING APA: From AAYES proceed to LOWRE and proceed on the RNAV (GPS) RWY 17L approach.

LANDING BJC: From PYDRT proceed on the RNAV (GPS) RWY 12L approach.

LANDING LMO: From HBALL proceed to KAYOO then to WOLTS and proceed on the RNAV (GPS) RWY 29 approach.

LANDING FNL/GXY: Proceed to GLL VOR/DME, and proceed on the approach.