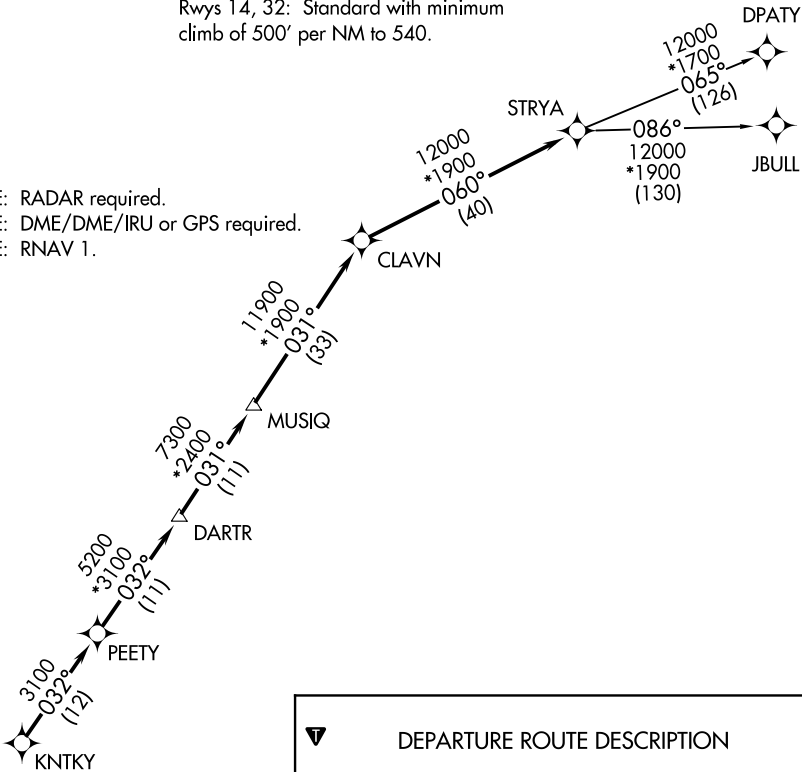


CTAF  
122.8  
HOUSTON DEP CON  
134.45 284.0

TOP ALTITUDE: ASSIGNED BY ATC

TAKEOFF MINIMUMS  
Rwys 14, 32: Standard with minimum  
climb of 500' per NM to 540.

NOTE: RADAR required.  
NOTE: DME/DME/IRU or GPS required.  
NOTE: RNAV 1.



DEPARTURE ROUTE DESCRIPTION

TAKEOFF RUNWAY 14: Climb on heading 140° to 540 for RADAR vectors to KNTKY, thence. . .  
TAKEOFF RUNWAY 32: Climb on heading 320° to 540 for RADAR vectors to KNTKY, thence. . .

. . . .on track 032° to PEETY, then on track 032° to DARTR, then on track 031° to MUSIQ, then on track 031° to CLAVN, then on track 060° to STRYA, then on (transition). Maintain ATC assigned altitude. Expect filed altitude 10 minutes after departure.

DPATY TRANSITION (STRYA8.DPATY)  
JBULL TRANSITION (STRYA8.JBULL)

NOTE: Chart not to scale.

SC-5, 22 JAN 2026 to 19 FEB 2026

SC-5, 22 JAN 2026 to 19 FEB 2026