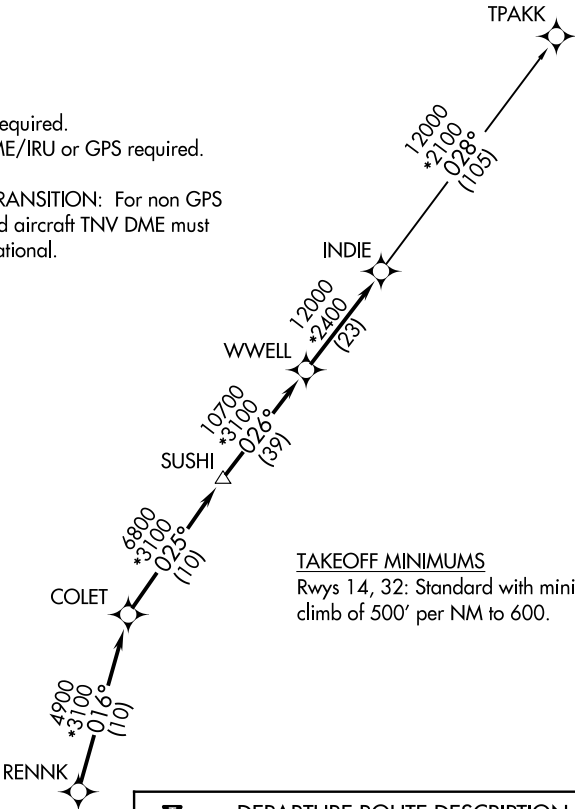


AWOS-3
118.475
CTAF
122.7
HOUSTON CENTER
128.6 360.8

TOP ALTITUDE:
ASSIGNED BY ATC

- NOTE: RADAR required.
NOTE: DME/DME/IRU or GPS required.
NOTE: RNAV 1.
NOTE: TPAKK TRANSITION: For non GPS
equipped aircraft TNV DME must
be operational.



TAKEOFF MINIMUMS
Rwys 14, 32: Standard with minimum
climb of 500' per NM to 600.

DEPARTURE ROUTE DESCRIPTION

TAKEOFF RUNWAY 14: Climb on heading 148° to 600
for RADAR vectors to RENNK, thence . . .
TAKEOFF RUNWAY 32: Climb on heading 328° to 600
for RADAR vectors to RENNK, thence . . .

. . . on track 016° to COLET, then on track 025° to
SUSHI, then on track 026° to WWELL, then on track
026° to INDIE, then on (transition). Maintain ATC
assigned altitude. Expect filed altitude 10 minutes after
departure.

TPAKK TRANSITION (INDIE8.TPAKK)

NOTE: Chart not to scale.