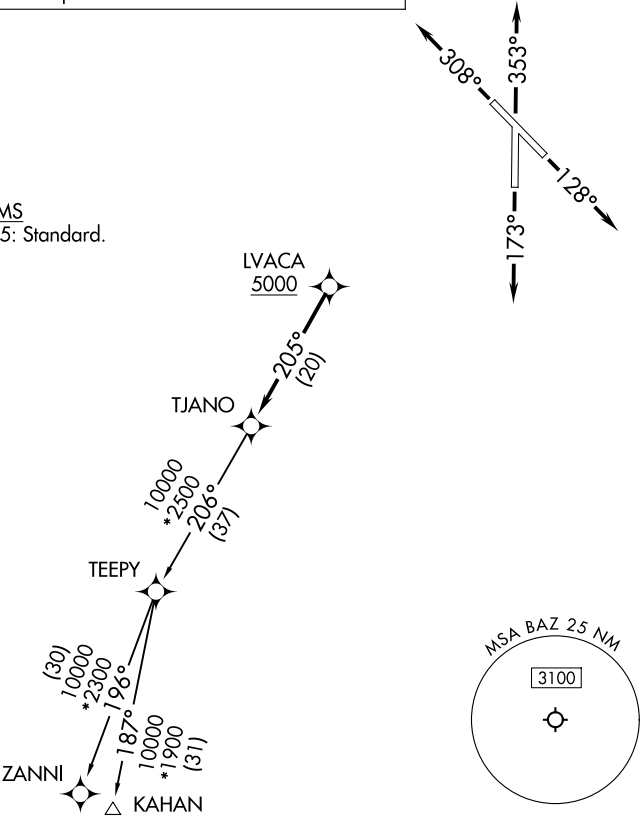


SAN ANTONIO DEP CON
128.05 290.225
ATIS
119.325
CLNC DEL
134.75
CLNC DEL (When twr closed)
134.75
GND CON
120.175
NEW BRAUNFELS TOWER★
127.05 285.4

RNAV 1 - DME/DME IRU or GPS.
RADAR required for non-GPS equipped aircraft.
RADAR required.

TOP ALTITUDE:
ASSIGNED BY ATC

TAKEOFF MINIMUMS
Rwys 13, 17, 31, 35: Standard.



NOTE: Chart not to scale.



DEPARTURE ROUTE DESCRIPTION

- TAKEOFF RUNWAY 13: Climb on heading 128° or as assigned by ATC, for vectors to LVACA, thence. . .
- TAKEOFF RUNWAY 17: Climb on heading 173° or as assigned by ATC, for vectors to LVACA, thence. . .
- TAKEOFF RUNWAY 31: Climb on heading 308° or as assigned by ATC, for vectors to LVACA, thence. . .
- TAKEOFF RUNWAY 35: Climb on heading 353° or as assigned by ATC, for vectors to LVACA, thence. . .

. . .on track 205° to TJANO, then on transition. Maintain ATC assigned altitude.
Expect filed altitude 10 minutes after departure.

KAHAN TRANSITION (TJANO2.KAHAN)
ZANNI TRANSITION (TJANO2.ZANNI)