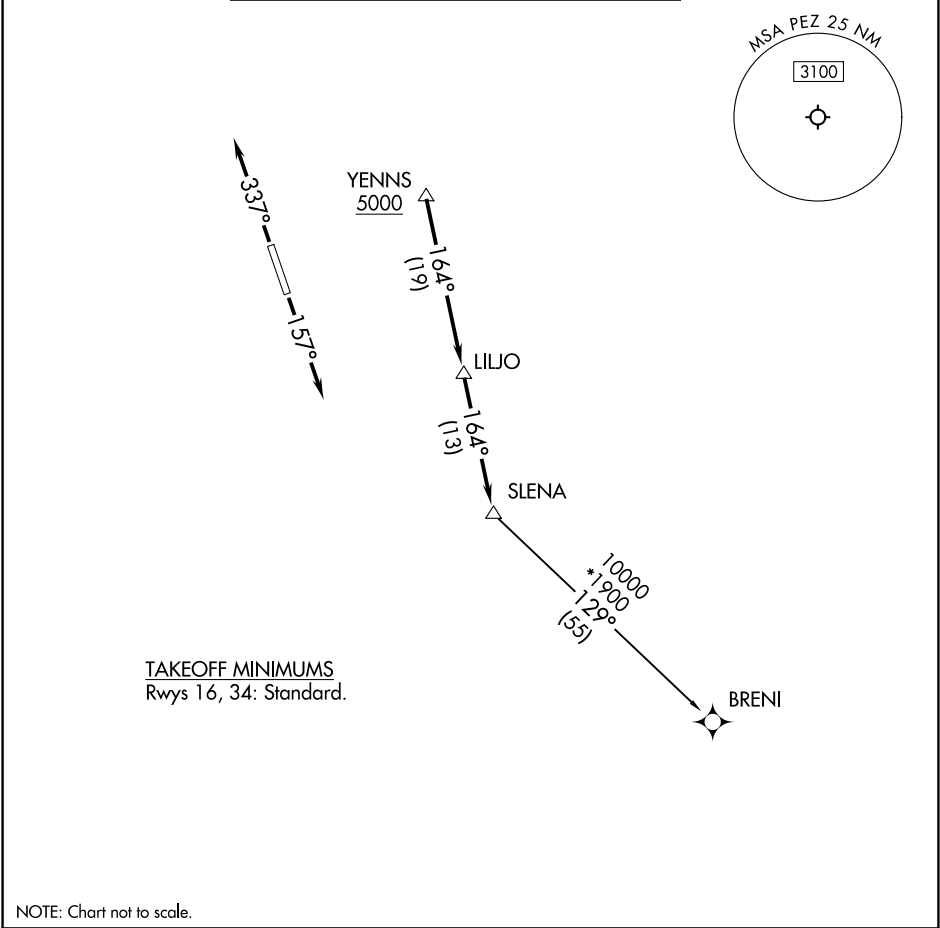


SAN ANTONIO DEP CON 125.7 290.225 CLNC DEL 121.375	RNAV 1 - DME/DME/IRU or GPS. RADAR required for non-GPS equipped aircraft. RADAR required.	TOP ALTITUDE: ASSIGNED BY ATC
---	--	----------------------------------



<p>DEPARTURE ROUTE DESCRIPTION</p> <p><u>TAKEOFF RUNWAY 16:</u> Climb on heading 157° or as assigned by ATC, for vectors to YENNS. Thence. . .</p> <p><u>TAKEOFF RUNWAY 34:</u> Climb on heading 337° or as assigned by ATC, for vectors to YENNS. Thence. . .</p> <p>. . .on track 164° to LILJO, then on track 164° to SLENA, then on transition. Maintain ATC assigned altitude. Expect filed altitude 10 minutes after departure.</p> <p><u>BRENI TRANSITION (SLENA2.BRENI)</u></p>
