

(BLTWY7.BLTWY) 21336

AL-6575 (FAA)

HOUSTON/SOUTHWEST (AXH)  
HOUSTON, TEXAS

BLTWY SEVEN DEPARTURE (RNAV)

AWOS-3  
123.625  
CLNC DEL  
120.8  
CTAF  
123.0  
HOUSTON DEP CON  
123.8 257.7

TOP ALTITUDE:  
ASSIGNED BY ATC

NOTE: RADAR required.  
NOTE: DME/DME/IRU or GPS required.  
NOTE: RNAV 1.

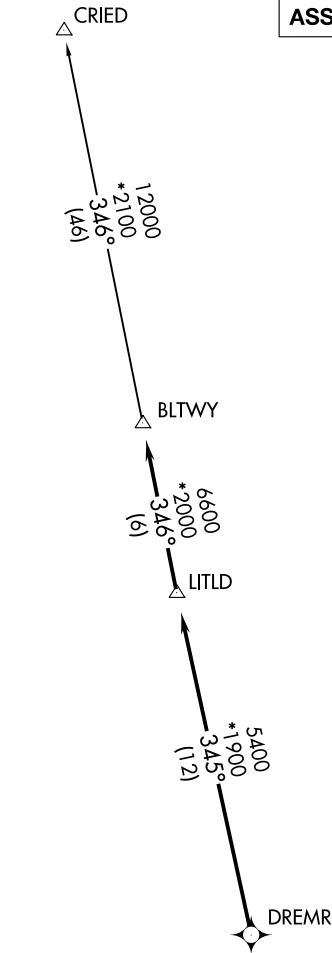
TAKEOFF MINIMUMS  
Rwy 9, 27: Standard with minimum climb of  
500' per NM to 580.

▼ DEPARTURE ROUTE DESCRIPTION

TAKEOFF RUNWAY 9: Climb on heading 089° to 2000 for RADAR vectors to DREMR, thence . . .  
TAKEOFF RUNWAY 27: Climb on heading 269° to 2200 for RADAR vectors to DREMR, thence . . .

...on track 345° to LITLD, then on track 346° to BLTWY, then on (transition).  
Maintain ATC assigned altitude. Expect filed altitude 10 minutes after departure.

CRIED TRANSITION (BLTWY7.CRIED)



NOTE: Chart not to scale.

BLTWY SEVEN DEPARTURE (RNAV)  
(BLTWY7.BLTWY) 07OCT21

HOUSTON, TEXAS  
HOUSTON/SOUTHWEST (AXH)

SC-5, 22 JAN 2026 to 19 FEB 2026

SC-5, 22 JAN 2026 to 19 FEB 2026