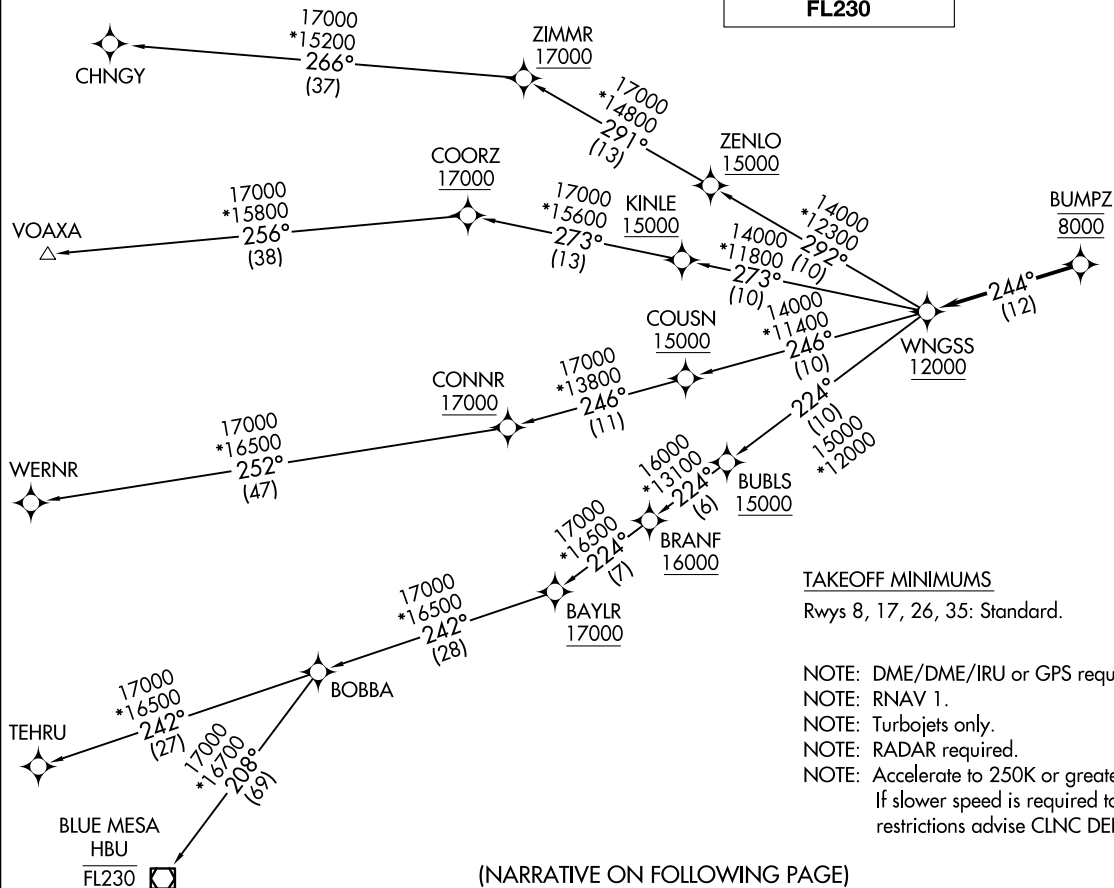


COLORADO AIR AND SPACE PORT (CFO)  
DENVER, COLORADO  
AL-6851 (FAA)

A diagram showing a cross-section of a beam. A vertical axis is labeled 'Z' with an upward-pointing arrow. A horizontal axis is shown with arrows at both ends, representing the Y-axis. A rectangular cross-section of the beam is centered at the origin of these axes.

NOTE: DME/DME/IRU or GPS required.  
NOTE: RNAV 1.  
NOTE: Turbojets only.  
NOTE: RADAR required.  
NOTE: Accelerate to 250K or greater upon reaching 10000.  
If slower speed is required to meet crossing  
restrictions advise CLNC DEL prior to taxi.

(NARRATIVE ON FOLLOWING PAGE)

DENVER, COLORADO  
COLORADO AIR AND SPACE PORT (CTO)



DEPARTURE ROUTE DESCRIPTION

TAKEOFF RUNWAY 8: Climb on a heading between 312° CW 228° as assigned by ATC. Thence. . . .

TAKEOFF RUNWAY 17: Climb on a heading between 352° CW 229° as assigned by ATC. Thence. . . .

TAKEOFF RUNWAY 26: Climb on a heading between 315° CW 083° as assigned by ATC. Thence. . . .

TAKEOFF RUNWAY 35: Climb on a heading between 313° CW 172° as assigned by ATC. Thence. . . .

. . . .expect RADAR vectors to cross BUMPZ at 8000 then on track 244° to cross WNGSS at or above 12000 then on (transition) maintain FL230 or filed lower altitude. Expect higher filed altitude ten minutes after departure.

- BLUE MESA TRANSITION (WNGSS1.HBU)
- CHNGY TRANSITION (WNGSS1.CHNGY)
- TEHRU TRANSITION (WNGSS1.TEHRU)
- VOAXA TRANSITION (WNGSS1.VOAXA)
- WERNR TRANSITION (WNGSS1.WERNR)

SW-1, 22 JAN 2026 to 19 FEB 2026

SW-1, 22 JAN 2026 to 19 FEB 2026