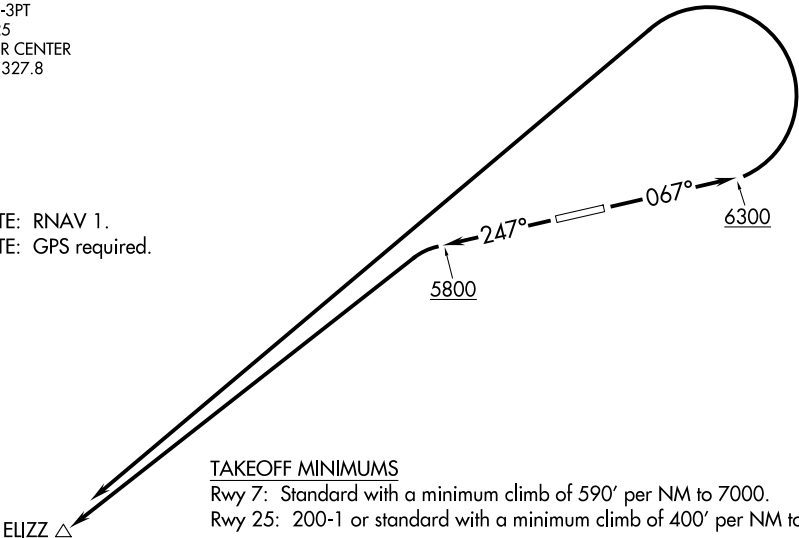


AWOS-3PT  
119.025  
DENVER CENTER  
134.5 327.8

NOTE: RNAV 1.  
NOTE: GPS required.



TAKEOFF MINIMUMS

Rwy 7: Standard with a minimum climb of 590' per NM to 7000.  
Rwy 25: 200-1 or standard with a minimum climb of 400' per NM to 5800.

TAKEOFF OBSTACLE NOTES

- Rwy 7: Fence, navaid, vertical point beginning 23' from DER, 16' right of centerline, up to 6' AGL/5294' MSL.  
Tree, navaid beginning 32' from DER, 78' left of centerline, up to 5281' MSL.  
Pole, wind indicator beginning 80' from DER, 258' left of centerline, up to 18' AGL/5297' MSL.  
Fence, traverse way beginning 352' from DER, 234' right of centerline, up to 1' AGL/5297' MSL.  
Poles beginning 476' from DER, 581' left of centerline, up to 26' AGL/5304' MSL.  
Pole 755' from DER, 584' left of centerline, 37' AGL/5309' MSL.  
Terrain beginning 1.1 NM from DER, 1777' left of centerline, up to 5633' MSL.  
Terrain 1.2 NM from DER, 2529' right of centerline, 5539' MSL.  
Terrain, trees beginning 1.3 NM from DER, 1414' right of centerline, up to 5623' MSL.  
Trees, terrain beginning 1.8 NM from DER, 1414' right of centerline, up to 5806' MSL.  
Trees beginning 1.9 NM from DER, 626' right of centerline, up to 5950' MSL.  
Trees, terrain beginning 2 NM from DER, 407' right of centerline, up to 6007' MSL.  
Terrain beginning 2.1 NM from DER, 1070' left of centerline, up to 5769' MSL.  
Trees, terrain beginning 2.1 NM from DER, 396' right of centerline, up to 6119' MSL.  
Trees, terrain beginning 2.2 NM from DER, 954' left of centerline, up to 5853' MSL.  
Trees beginning 2.3 NM from DER, 393' right of centerline, up to 6158' MSL.  
Trees, terrain beginning 2.3 NM from DER, 616' left of centerline, up to 6018' MSL.  
Trees beginning 2.4 NM from DER, 424' left of centerline, up to 6084' MSL.
- Rwy 25: Vegetation 86' from DER, 363' left of centerline, 5250' MSL.  
Vegetation beginning 141' from DER, 382' left of centerline, up to 5277' MSL.  
Vegetation 326' from DER, 491' left of centerline, 5281' MSL.  
Poles, vegetation, building beginning 424' from DER, 404' left of centerline, up to 26' AGL/5286' MSL.  
Trees 2551' from DER, 306' right of centerline, 5302' MSL.  
Tree 2589' from DER, 80' right of centerline, 5303' MSL.  
Building 3590' from DER, 1369' left of centerline, 29' AGL/5332' MSL.  
Tower 3451' from DER, 1406' left of centerline, 103' AGL/5408 MSL.

NOTE: Chart not to scale.

DEPARTURE ROUTE DESCRIPTION

TAKEOFF RUNWAY 7: Climb heading 067° to 6300 then climbing left turn direct ELIZZ, thence. . . .  
TAKEOFF RUNWAY 25: Climb heading 247° to 5800 then climbing left turn direct ELIZZ, thence. . . .  
. . . .proceed on course.