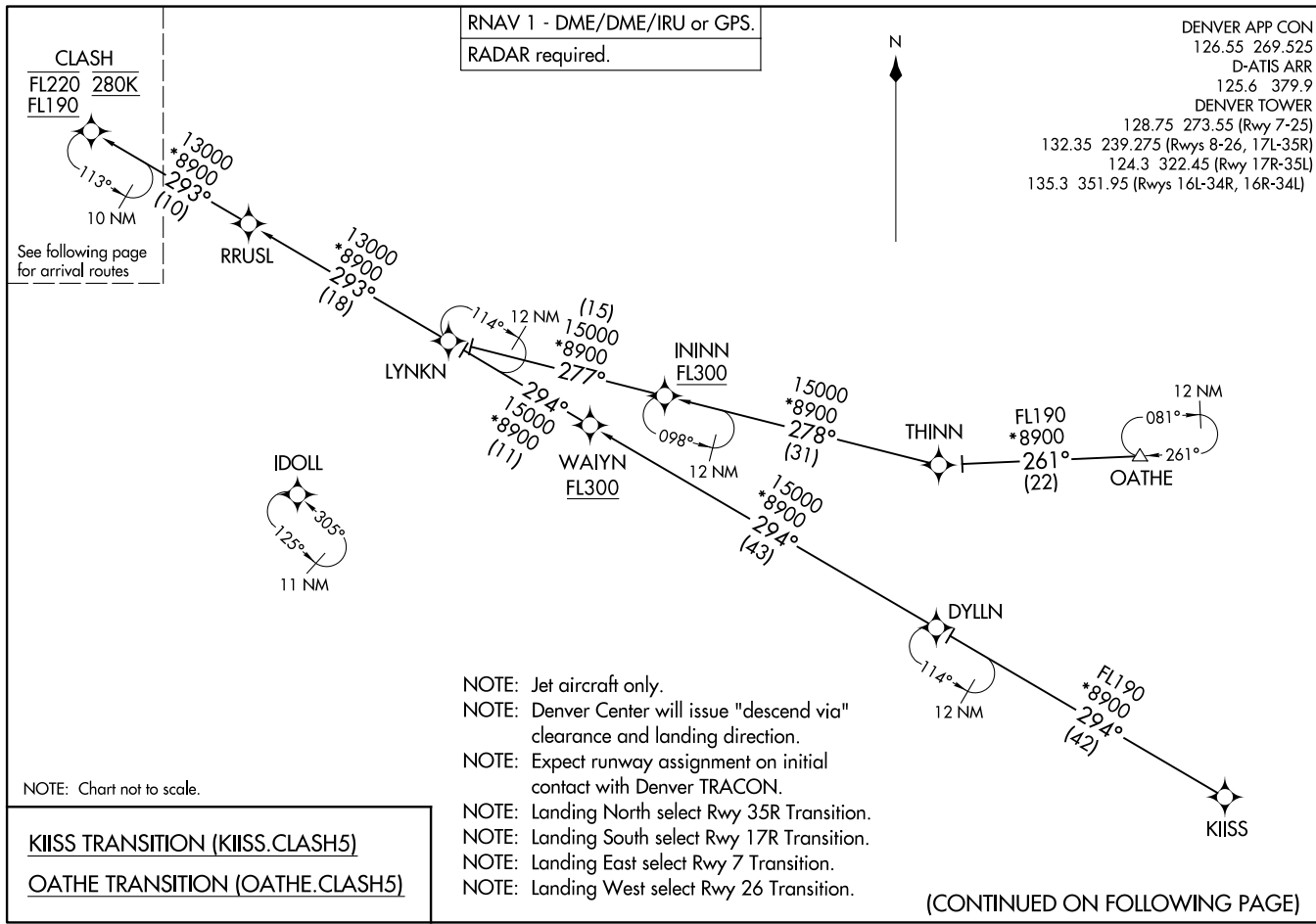


CLASH FIVE ARRIVAL (RNAV) Transition Routes
(CLASH.CLASH5) 12JUN25

DENVER, COLORADO
DENVER INTL (DEN)

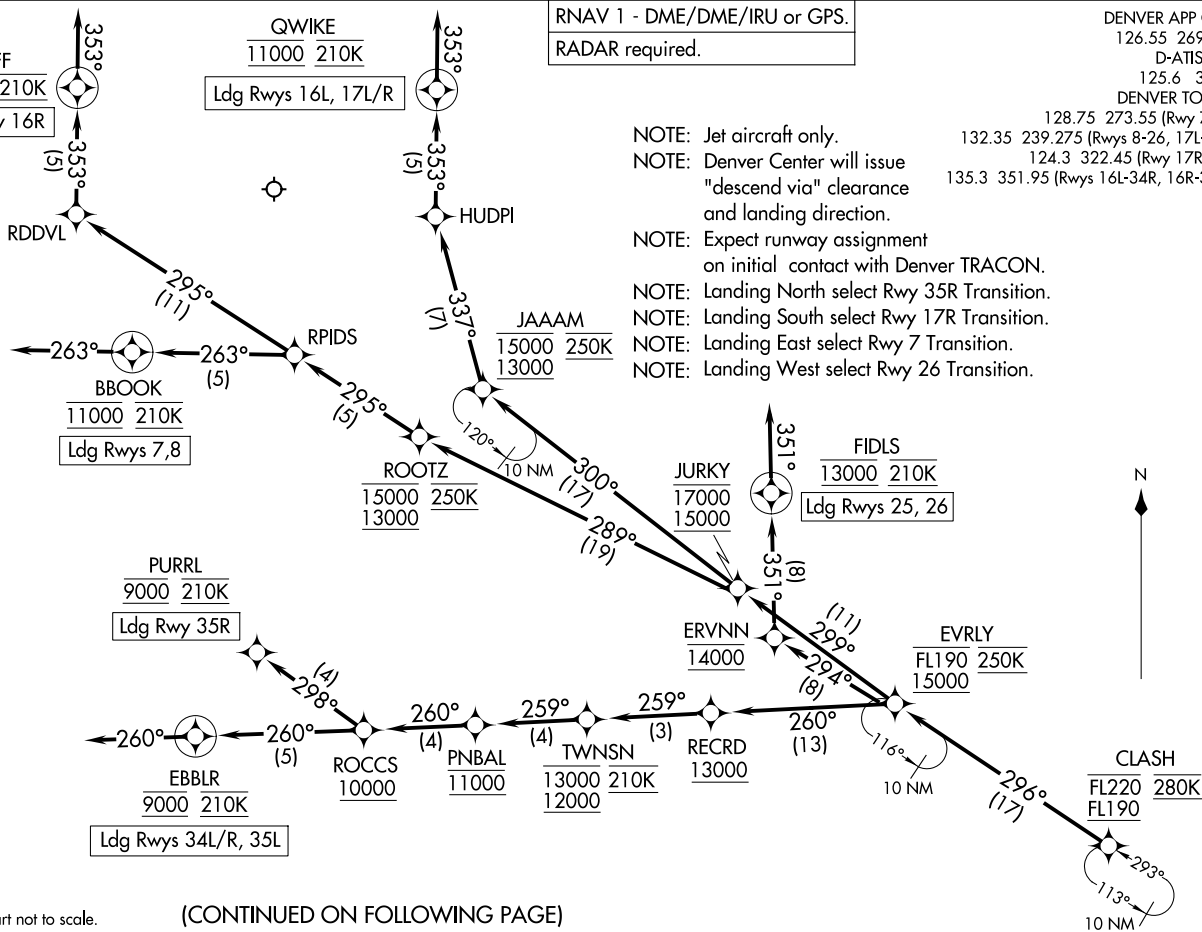


(CLASH.CLASH5) 25163
AL-9077 (FAA)
DENVER INTL (DEN)
DENVER, COLORADO

DENVER APP CON
126.55 269.525
D-ATIS ARR
125.6 379.9
DENVER TOWER
128.75 273.55 (Rwy 7-25)
132.35 239.275 (Rwys 8-26, 17L-35R)
124.3 322.45 (Rwy 17R-35L)
135.3 351.95 (Rwys 16L-34R, 16R-34L)

RNAV 1 - DME/DME/IRU or GPS.
RADAR required.

- NOTE: Jet aircraft only.
NOTE: Denver Center will issue "descend via" clearance and landing direction.
NOTE: Expect runway assignment on initial contact with Denver TRACON.
NOTE: Landing North select Rwy 35R Transition.
NOTE: Landing South select Rwy 17R Transition.
NOTE: Landing East select Rwy 7 Transition.
NOTE: Landing West select Rwy 26 Transition.



NOTE: Chart not to scale.

(CONTINUED ON FOLLOWING PAGE)

ARRIVAL ROUTE DESCRIPTION

From CLASH on track 296° to cross EVRLY between 15000 and FL190 and at 250K.

LANDING RUNWAYS 7, 8: From EVRLY on track 299° to cross JURKY between 15000 and 17000, then on track 289° to cross ROOTZ between 13000 and 15000 and at 250K, then on track 295° to RPIDS, then on track 263° to cross BBOOK at 11000 and at 210K, then on track 263°. Expect RADAR vectors to final approach course.

LANDING RUNWAYS 16L, 17L/R: From EVRLY on track 299° to cross JURKY between 15000 and 17000, then on track 300° to cross JAAAM between 13000 and 15000 and at 250K, then on track 337° to HUDPI, then on track 353° to cross QWIKE at 11000 and at 210K, then on track 353°. Expect RADAR vectors to final approach course.

LANDING RUNWAY 16R: From EVRLY on track 299° to cross JURKY between 15000 and 17000, then on track 289° to cross ROOTZ between 13000 and 15000 and at 250K, then on track 295° to RPIDS, then on track 295° to RDDVL, then on track 353° to cross CLFFF at 11000 and at 210K, then on track 353°. Expect RADAR vectors to final approach course.

LANDING RUNWAYS 25, 26: From EVRLY on track 294° to cross ERVNN at 14000, then on track 351° to cross FIDLS at 13000 and at 210K, then on track 351°. Expect RADAR vectors to final approach course.

LANDING RUNWAYS 34L/R, 35L: From EVRLY on track 260° to cross RECRD at or above 13000, then on track 259° to cross TWNSN between 12000 and 13000 and at 210K, then on track 259° to cross PNBAL at 11000, then on track 260° to cross ROCCS at or above 10000, then on track 260° to cross EBBLR at 9000 and at 210K, then on track 260°. Expect RADAR vectors to final approach course.

LANDING RUNWAY 35R: From EVRLY on track 260° to cross RECRD at or above 13000, then on track 259° to cross TWNSN between 12000 and 13000 and at 210K, then on track 259° to cross PNBAL at 11000, then on track 260° to cross ROCCS at or above 10000, then on track 298° to cross PURRL at 9000 and at 210K. Expect ILS or LOC RWY 35R approach.

LOST COMMUNICATIONS: In the event of lost communications prior to runway transition assignment, when DEN is landing south, execute the ILS RWY 17R, when DEN is landing north, execute the ILS RWY 35R.