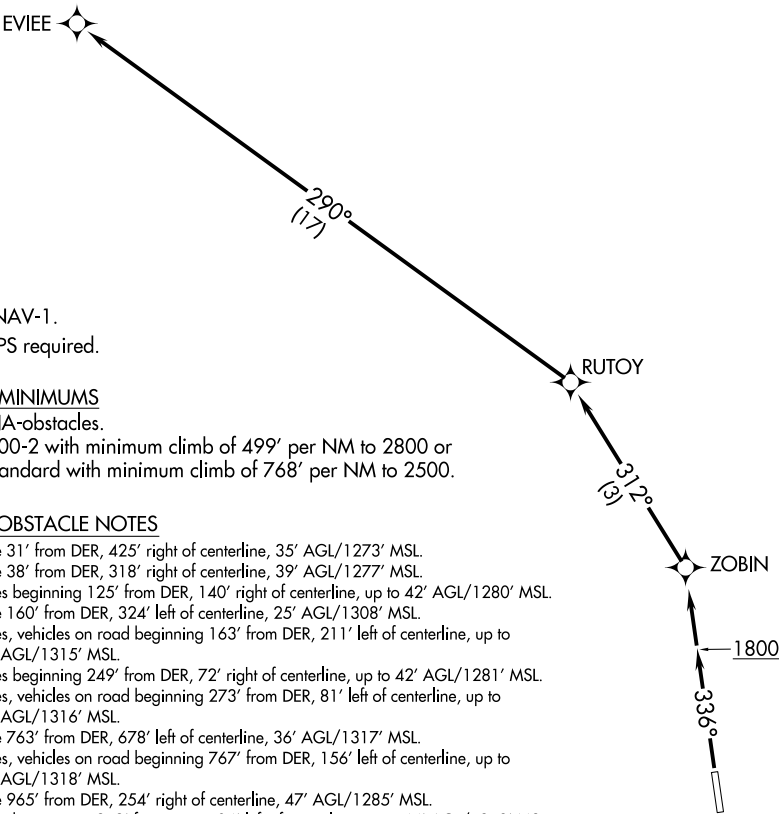


ANCHORAGE CENTER

120.9 319.2



NOTE: RNAV-1.  
NOTE: GPS required.

TAKEOFF MINIMUMS  
Rwy 15: NA-obstacles.  
Rwy 33: 700-2 with minimum climb of 499' per NM to 2800 or  
standard with minimum climb of 768' per NM to 2500.

TAKEOFF OBSTACLE NOTES  
Rwy 33: Tree 31' from DER, 425' right of centerline, 35' AGL/1273' MSL.  
Tree 38' from DER, 318' right of centerline, 39' AGL/1277' MSL.  
Trees beginning 125' from DER, 140' right of centerline, up to 42' AGL/1280' MSL.  
Tree 160' from DER, 324' left of centerline, 25' AGL/1308' MSL.  
Trees, vehicles on road beginning 163' from DER, 211' left of centerline, up to  
32' AGL/1315' MSL.  
Trees beginning 249' from DER, 72' right of centerline, up to 42' AGL/1281' MSL.  
Trees, vehicles on road beginning 273' from DER, 81' left of centerline, up to  
36' AGL/1316' MSL.  
Tree 763' from DER, 678' left of centerline, 36' AGL/1317' MSL.  
Trees, vehicles on road beginning 767' from DER, 156' left of centerline, up to  
43' AGL/1318' MSL.  
Tree 965' from DER, 254' right of centerline, 47' AGL/1285' MSL.  
Trees beginning 1373' from DER, 504' left of centerline, up to 44' AGL/1319' MSL.  
Trees beginning 1569' from DER, 788' left of centerline, up to 44' AGL/1323' MSL.  
Tree 2217' from DER, 937' left of centerline, 43' AGL/1326' MSL.  
Tree 2454' from DER, 1107' left of centerline, 46' AGL/1329' MSL.  
Trees beginning 2809' from DER, 1199' left of centerline, up to 61' AGL/1343' MSL.  
Tree 3213' from DER, 1302' left of centerline, 66' AGL/1346' MSL.  
Tree 3768' from DER, 1398' right of centerline, 39' AGL/1365' MSL.  
Trees 4194' from DER, 1573' right of centerline, 38' AGL/1595' MSL.  
Trees beginning 4391' from DER, 1382' right of centerline, up to 53' AGL/1678' MSL.  
Trees beginning 4784' from DER, 980' right of centerline, up to 49' AGL/1681' MSL.  
Trees beginning 4954' from DER, 1419' right of centerline, up to 48' AGL/1686' MSL.  
Trees beginning 5161' from DER, 992' right of centerline, up to 54' AGL/1702' MSL.

DEPARTURE ROUTE DESCRIPTION

TAKEOFF RUNWAY 33: Climb on heading 336° to 1800, then climb direct to ZOBIN,  
then on track 312° to RUTOY, then on track 290° to cross EVIEE at or above  
MEA for route of flight.