

GOLDSBORO, NORTH CAROLINA

# RNAV (GPS) RWY 8

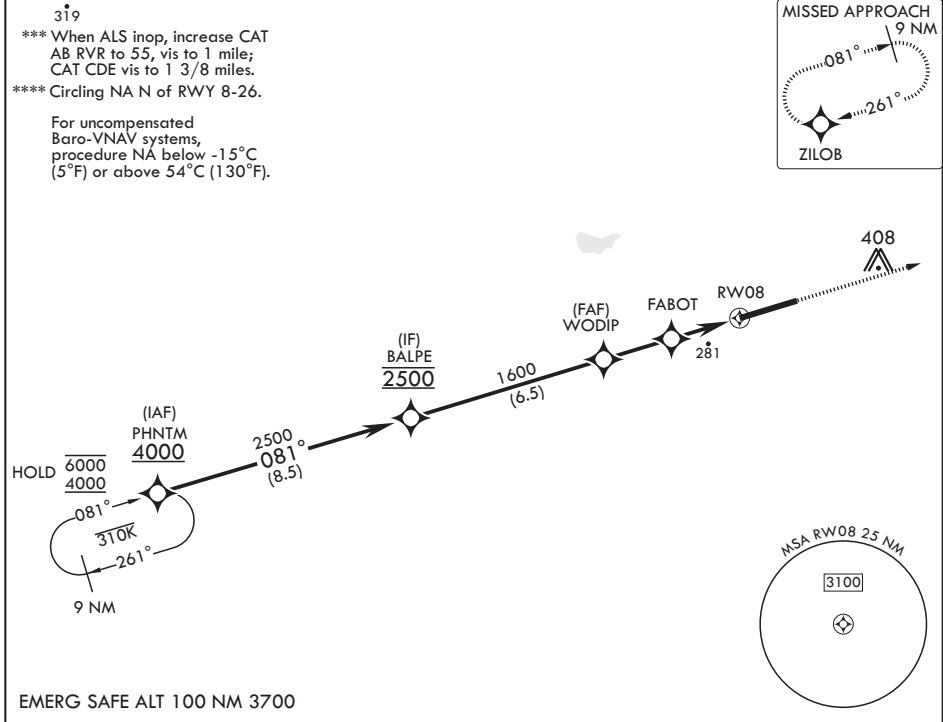
WAAS CH <b>63600</b> W08A	APCH CRS <b>081°</b>	Rwy ldg TDZE Arprt Elev	<b>11,760</b> <b>73</b> <b>109</b>
---------------------------------	-------------------------	-------------------------------	--

- (USAF)

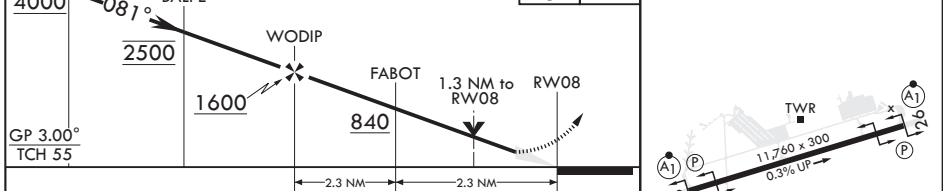
SEYMOUR JOHNSON AFB (KGSB)

RNP APCH-GPS	ALSF-1	MISSED APPROACH: Climb to 2300 direct ZILOB and hold.
--------------	--------	---

ATIS★ <b>317.625</b>	APP CON <b>119.7 273.6</b> (111° -257°) <b>123.7 290.9</b> (258° -110°)	TOWER★ <b>126.25 370.875</b>	GND CON <b>132.45 275.8</b>	CLNC DEL <b>128.025 270.8</b>
-------------------------	---	---------------------------------	--------------------------------	----------------------------------



PHNTM 4000	BALPE 2500	WODIP 1600	FABOT 840	RWY08	2300 ZILOB ELEV 109 TDZE 73
------------	------------	------------	-----------	-------	-----------------------------



CATEGORY	A	B	C	D	E
LPV DA*	273/24		200	(200-½)	
LNAV/VNAV DA**	540/50		467	(500-1)	
LNAV MDA***	540/24	467 (500-½)	540/50	467	(500-1)
C CIRCLING****	580-1	600-1	680-1½	740-2	740-2¼
	471 (500-1)	491 (500-1)	571 (600-½)	631 (700-2)	631 (700-2¼)

GOLDSBORO, NORTH CAROLINA 35°20'N - 77°58'W SEYMOUR JOHNSON AFB (KGSB)

Amdt 7 11JUL24

# RNAV (GPS) RWY 8

SE-2, 19 FEB 2026 to 19 MAR 2026

SE-2, 19 FEB 2026 to 19 MAR 2026