

|  |                        |   |
|--|------------------------|---|
| VORTAC PDT<br><b>114.7</b><br>Chan <b>94</b> | APP CRS<br><b>079°</b> | Rwy Ldg<br>TDZE <b>1486</b><br>Apt Elev <b>1497</b> |
|--|------------------------|---|

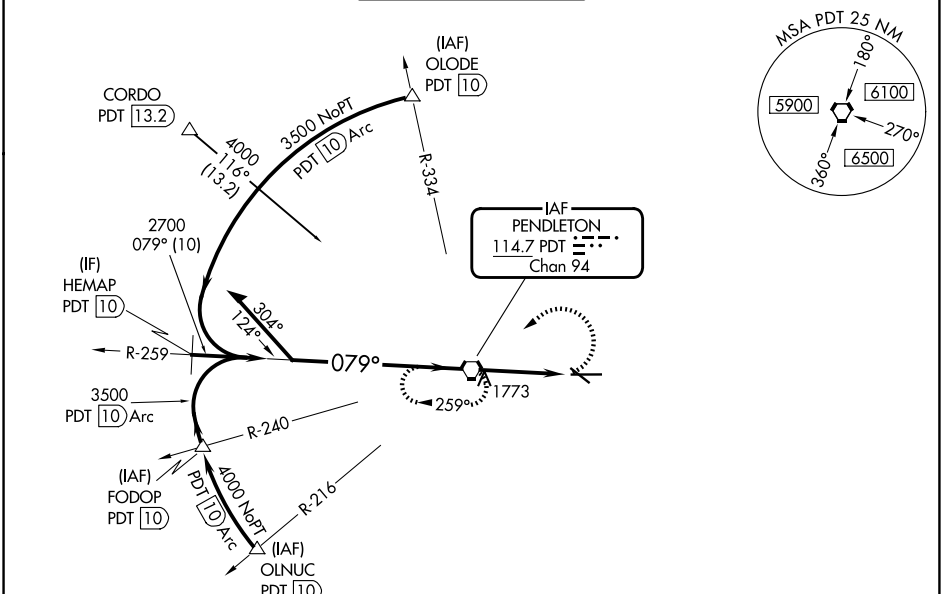
# VOR RWY 8

EASTERN OREGON RGNL AT PENDLETON (PDT)

**⚠** Circling to Rwy 11 NA at night. Rwy 8 helicopter visibility reduction below 3/4 SM NA. VDP NA when using Walla Walla altimeter setting. When local altimeter setting not received, use Walla Walla altimeter setting and increase all MDA 140 feet, increase S-8 Cat C/D visibility to 1 1/8 SM, Circling Cat C visibility 1/4 SM and Cat D visibility 1/2 SM. For inop ALS, increase S-8 Cat C visibility to 1 1/8 SM. For inop ALS when using Walla Walla altimeter setting, increase S-8 Cat C/D visibility to 2 SM.

**ODALS**  
MISSED APPROACH:  
Climbing left turn to 4000 direct PDT VORTAC and hold, continue climb-in-hold to 4000.

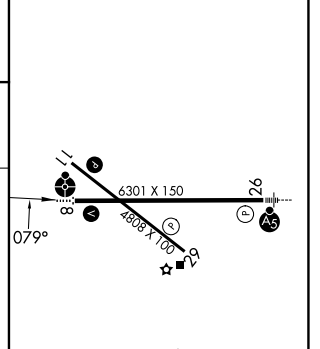
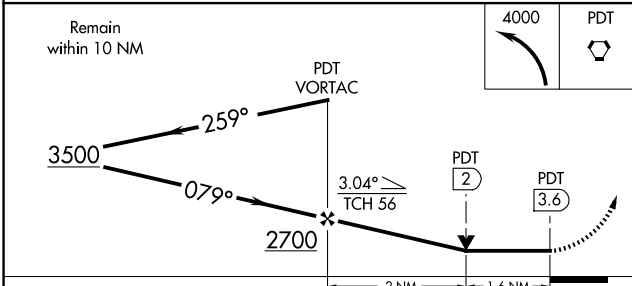
|                        |   |  |                               |                         |
|------------------------|---|--|-------------------------------|-------------------------|
| ASOS<br><b>118.325</b> | SPOKANE APP CON *<br><b>133.15 379.15</b> | PENDLETON TOWER *<br><b>119.7 (CTAF) 257.8</b> | GND CON<br><b>121.9 257.8</b> | UNICOM<br><b>122.95</b> |
|------------------------|---|--|-------------------------------|-------------------------|



NW-1, 19 FEB 2026 to 19 MAR 2026

NW-1, 19 FEB 2026 to 19 MAR 2026

|           |          |           |
|-----------|----------|-----------|
| ELEV 1497 | <b>D</b> | TDZE 1486 |
|-----------|----------|-----------|



| CATEGORY | A                      | B | C                          | D                          |
|----------|------------------------|---|----------------------------|----------------------------|
| S-8      | 2040-3/4 554 (600-3/4) |   | 2040-1 1/2 554 (600-1 1/2) | 2040-1 3/4 554 (600-1 3/4) |
| CIRCLING | 2040-1 543 (600-1)     |   | 2040-1 5/8 543 (600-1 5/8) | 2200-2 1/4 703 (800-2 1/4) |

|                   |      |      |      |      |      |
|-------------------|------|------|------|------|------|
| FAF to MAP 3.6 NM |      |      |      |      |      |
| Knots             | 60   | 90   | 120  | 150  | 180  |
| Min:Sec           | 3:36 | 2:24 | 1:48 | 1:26 | 1:12 |