

LOC I-BAF 111.9	APP CRS 204°	Rwy Ldg 8919
		TDZE 270
		Apt Elev 270

ILS or LOC RWY 20

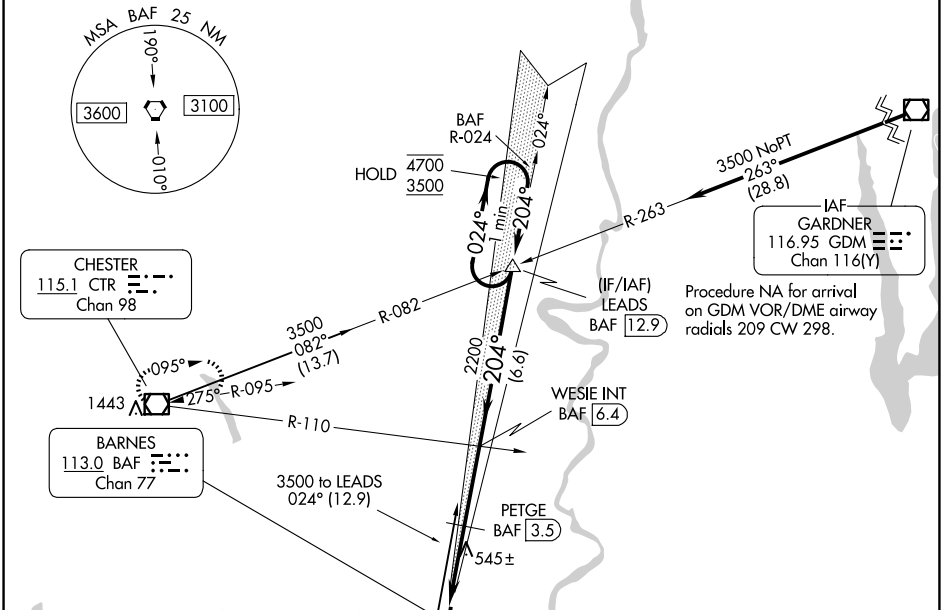
WESTFIELD-BARNES RGNL (BAF)

⚠ Circling Rwy 15 NA at night. DME from BAF VORTAC. DME use requires simultaneous reception of I-BAF and BAF DME. For inop ALS, increase S-ILS 20 Cat E visibility to RVR 4000; increase S-LOC 20 Cat E visibility to 3 SM; increase PETGE fix minimums S-LOC 20 Cat E visibility to 1 1/2 SM.

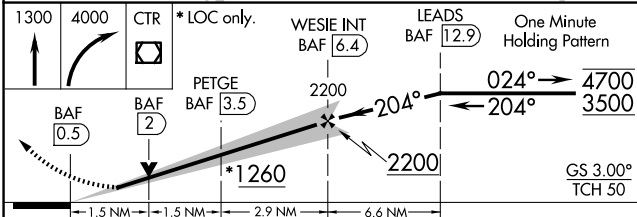
⚠ -20°C

MALSR MISSED APPROACH: Climb to 1300 then climbing right turn to 4000 direct CTR VOR/DME and hold, continue climb-in-hold to 4000.

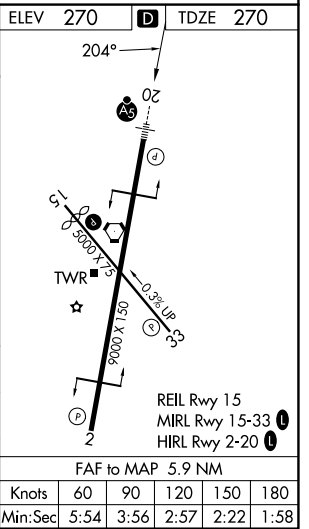
ATIS 127.1 263.15	BRADLEY APP CON 125.35 281.5	WESTFIELD TOWER ★ 125.075 (CTAF) 0 251.1	GND CON 121.7 289.4
-----------------------------	--	--	-------------------------------



ELEV 270	TDZE 270
----------	----------



CATEGORY	A	B	C	D	E
S-ILS 20	520/24		250 (300-1/2)		
S-LOC 20	1260/40 990 (1000-3/4)	1260/55 990 (1000-1)	1260-2 1/2 990 (1000-2 1/2)		
CIRCLING	1260-1 1/4 990 (1000-1 1/4)	1260-1 1/2 990 (1000-1 1/2)	1260-3 990 (1000-3)	1660-3 1390 (1400-3)	
	PETGE FIX MINIMUMS (DME REQUIRED)				
S-LOC 20	800/24	530 (600-1/2)	800/55	530 (600-1)	
CIRCLING	1160-1 1/4	890 (900-1 1/4)	1160-2 3/4 890 (900-2 3/4)	1660-3 1390 (1400-3)	



NE-1, 19 FEB 2026 to 19 MAR 2026

NE-1, 19 FEB 2026 to 19 MAR 2026