

VORTAC AXC <b>117.2</b> Chan <b>119</b>	APP CRS <b>169°</b>	Rwy Idg <b>5298</b> TDZE <b>680</b> Apt Elev <b>682</b>
---	------------------------	--

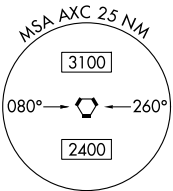
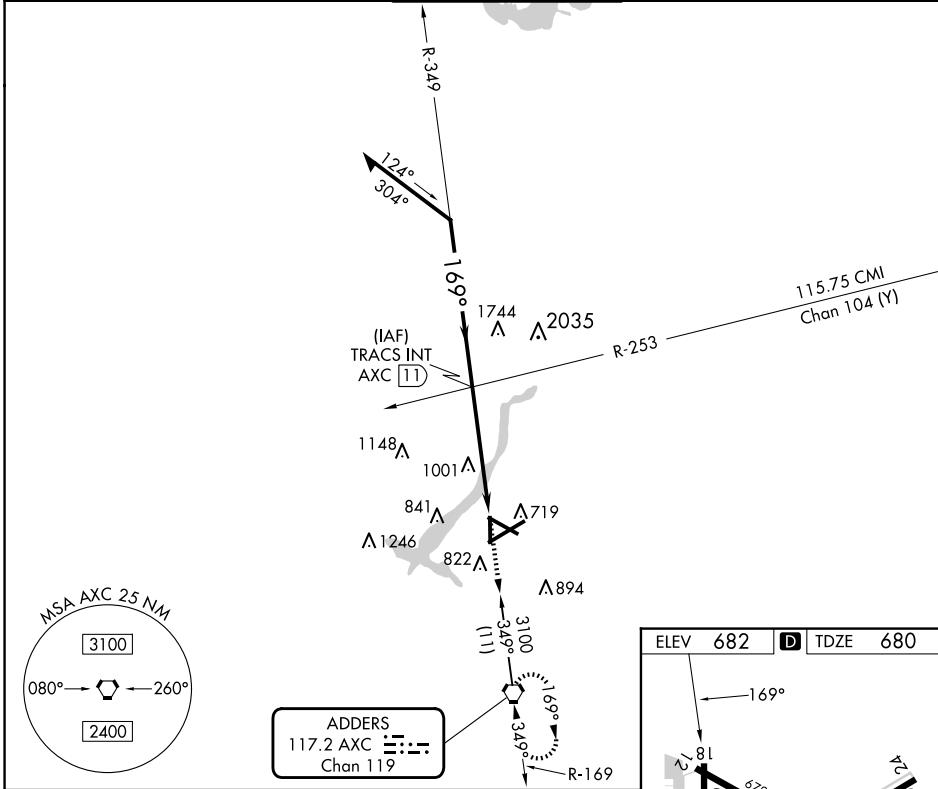
# VOR RWY 18

DECATUR (DEC)

**▼** When local altimeter setting not received, use Logan County altimeter setting and increase all MDA 80 feet; increase S-18 Cat C/D and Circling Cat C/D visibility ¼ SM. Rwy 18 helicopter visibility reduction below ¼ SM NA.

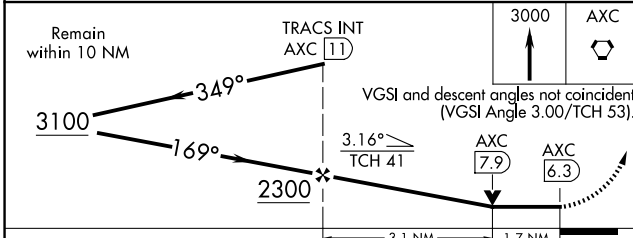
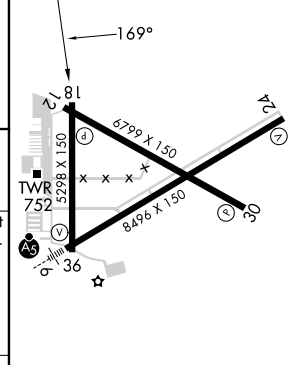
**MISSED APPROACH:** Climb to 3000 direct AXC VORTAC and hold, continue climb-in-hold to 3000.

ATIS <b>126.35</b>	CHAMPAIGN APP CON ★ <b>132.85 290.225</b>	DECATUR TOWER ★ <b>118.9 (CTAF) 0 291.775</b>	GND CON <b>121.75 291.775</b>	UNICOM <b>122.95</b>
-----------------------	--	--	----------------------------------	-------------------------



**ADDERS**  
117.2 AXC  
Chan 119

ELEV <b>682</b>	<b>D</b> TDZE <b>680</b>
-----------------	--------------------------



CATEGORY	A	B	C	D
S-18	1260-1 580 (600-1)		1260-1½ 580 (600-1½)	1260-1¾ 580 (600-1¾)
<b>C</b> CIRCLING	1260-1 578 (600-1)		1360-2 678 (700-2)	1360-2¼ 678 (700-2¼)

HIRL Rwy 6-24 <b>0</b>				
MIRL Rwys 12-30 and 18-36 <b>0</b>				
FAF to MAP 4.7 NM				
Knots	60	90	120	150 180
Min:Sed	4:42	3:08	2:21	1:53 1:34

EC-3, 19 FEB 2026 to 19 MAR 2026

EC-3, 19 FEB 2026 to 19 MAR 2026