

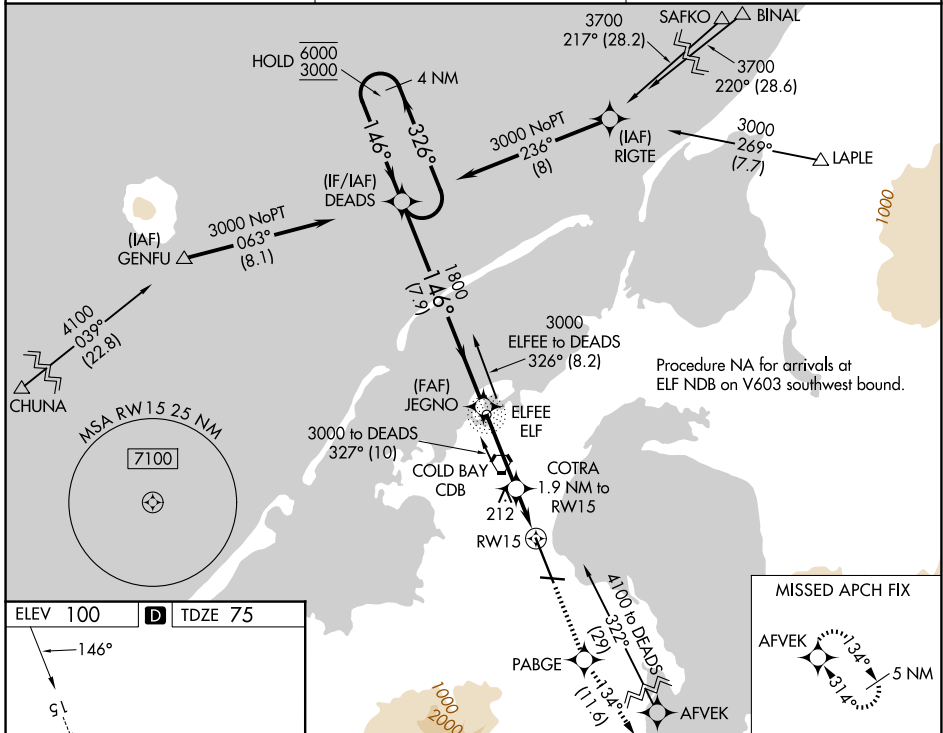
WAAS CH 45612 W15A	APP CRS 146°	Rwy Ldg TDZE Apt Elev	10179 75 100
--	------------------------	-----------------------------	---

RNAV (GPS) RWY 15

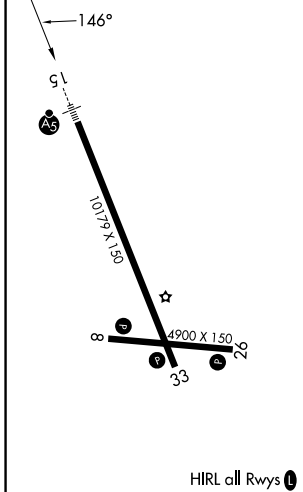
COLD BAY (CDB) (PACD)

RNP APCH.	MALSR	MISSED APPROACH: Climb to 4100 direct PABGE and on track 134° to AFVEK and hold, continue climb-in-hold to 4100.
<p>▼ For uncompensated Baro-VNAV systems, LNAV/VNAV NA below -10°C or above 54°C. Circling NA for Cat A southwest of Rwy 15-33 at night. Circling NA for Cats B/C/D southwest of Rwy 15-33. For inop ALS, increase LNAV/VNAV all Cats visibility to RVR 4000 and LNAV Cat C/D visibility to RVR 6000. #RVR 1800 authorized with use of FD or AP or HUD to DA.</p>		

ASOS 135.75	ANCHORAGE CENTER 118.5 278.3	COLD BAY RADIO 123.6 (CTAF) 0
-----------------------	--	---



ELEV 100	D	TDZE 75
----------	----------	---------



4 NM Holding Pattern	DEADS	JEGNO	4100	PABGE	tr 134°	AFVEK
6000 ← 326°	3000 → 146°	1800	↑	⬠	↖	⬠
GP 3.10°	TCH 55	COTRA 1.9 NM to RW15	*760	*1.1 NM to RW15	*LNNAV only	RW15
		7.9 NM	3.2 NM	0.8 NM	1.1 NM	
CATEGORY	A	B	C	D		
LPV DA#	275/24		200 (200-½)			
LNAV/VNAV DA	325/24		250 (300-½)			
LNAV MDA	480/24		405 (400-½)		480/40 405 (400-¾)	
CIRCLING	540-1		560-1		560-1½	
	440 (500-1)		460 (500-1)		460 (500-1½)	
	860-2½		760 (800-2½)			

AK, 22 JAN 2026 to 19 MAR 2026

AK, 22 JAN 2026 to 19 MAR 2026