

WAAS CH 42730 W26A	APP CRS 248°	Rwy Ldg TDZE Apt Elev	4900 100 100
--	------------------------	-----------------------------	---

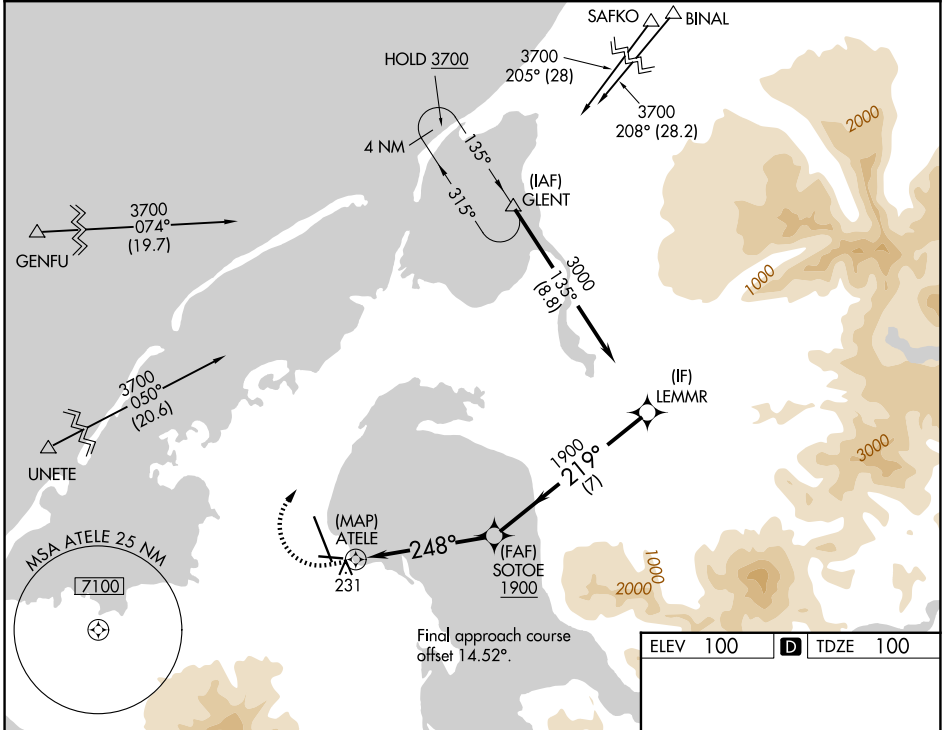
RNAV (GPS) RWY 26

COLD BAY (CDB) (PACD)

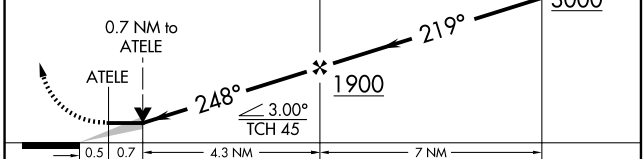
RNP APCH. MISSED APPROACH: Climb to 800 then climbing right turn to 3700 direct GLENT and hold, continue climb-in-hold to 3700. # Missed approach requires a minimum climb of 280 feet per NM to 1180.

⚠ Circling NA for Cat B, C, and D southwest of Rwy 15-33.

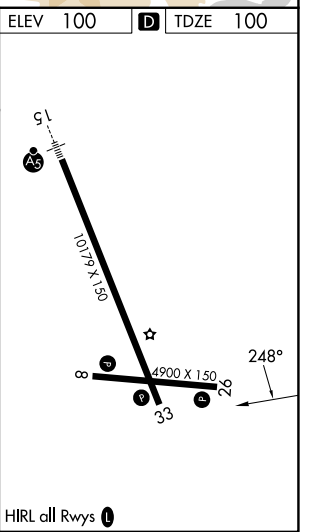
ASOS 135.75	ANCHORAGE CENTER 118.5 278.3	COLD BAY RADIO 123.6 (CTAF) 1
-----------------------	--	---



800 3700 GLENT VGSi and descent angles not coincident (VGSi Angle 3.00/TCH 36).



CATEGORY	A	B	C	D
LP MDA #	500-1	400 (400-1)	500-1 1/8	400 (400-1 1/8)
LP MDA	660-1	560 (600-1)	660-1 5/8	560 (600-1 5/8)
LNAV MDA #	500-1	400 (400-1)	500-1 1/8	400 (400-1 1/8)
LNAV MDA	700-1	600 (600-1)	700-1 3/4	600 (600-1 3/4)
CIRCLING	700-1	600 (600-1)	700-1 3/4 600 (600-1 3/4)	860-2 1/2 760 (800-2 1/2)



AK, 22 JAN 2026 to 19 MAR 2026

AK, 22 JAN 2026 to 19 MAR 2026