

APP CRS	Rwy Ldg	10014
063°	TDZE	258
	Apt Elev	305

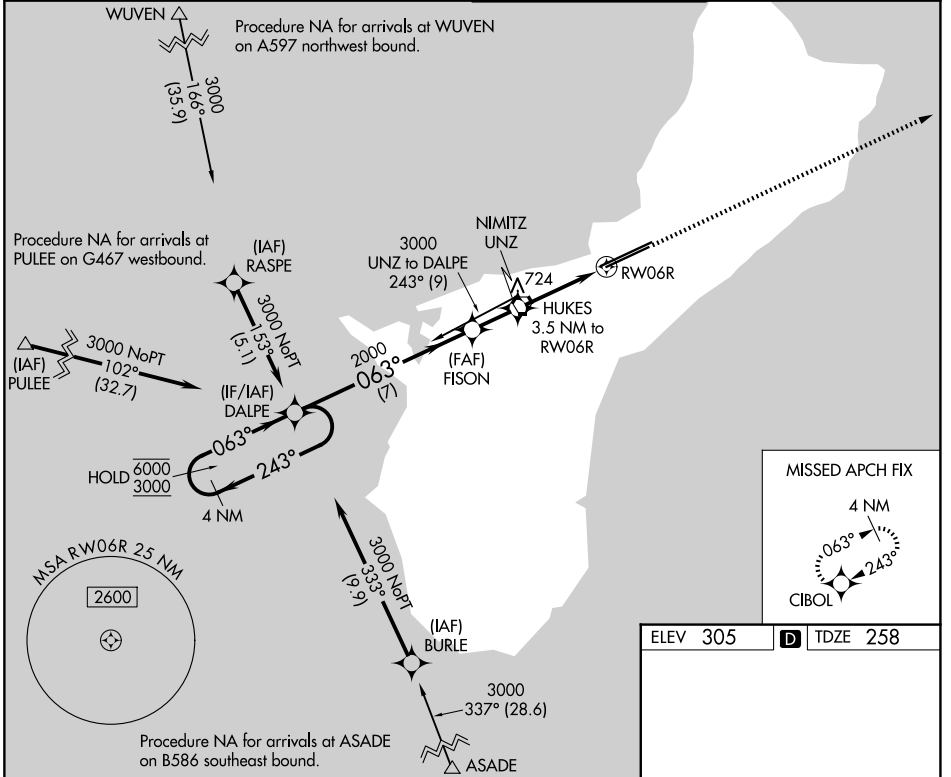
RNAV (GPS) Y RWY 6R

GUAM INTL (GUM)(PGUM)

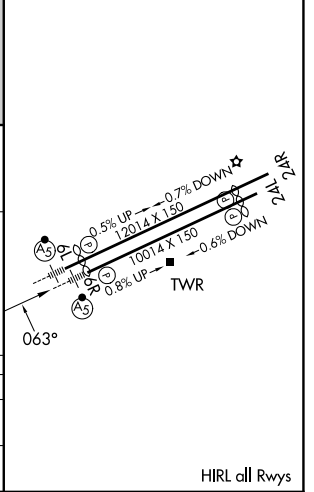
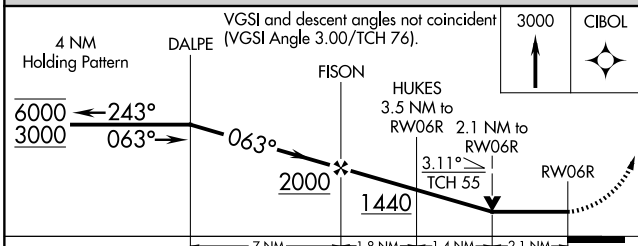
RNP APCH - GPS.
 ▼ Rwy 6R helicopter visibility reduction below 3/4 SM NA. For inop ALS, increase Cat A and B visibility to 1 SM, and Cat C and D to 2 SM. Circling NA southeast of Rwy 6R-24L.

MALSR 
 MISSED APPROACH: Climb to 3000 direct CIBOL and hold.

ATIS 119.0	GUAM CERAP 119.8 269.0	AGANA TOWER 118.1 340.2	GND CON 121.9 336.4
----------------------	----------------------------------	-----------------------------------	-------------------------------



ELEV 305	D TDZE 258
----------	-------------------



CATEGORY	A	B	C	D
RNAV MDA	980-3/4	722 (700-3/4)	980-1 5/8	722 (700-1 5/8)
CIRCLING	980-1	675 (700-1)	980-2	NA

PAC, 22 JAN 2026 to 19 MAR 2026

PAC, 22 JAN 2026 to 19 MAR 2026

HIRL all Rwys