

WAAS CH 40234 W17A	APP CRS 175°	Rwy Ldg TDZE Apt Elev	3704 27 28
--	------------------------	-----------------------------	---------------------------------------

RNAV (GPS) RWY 17

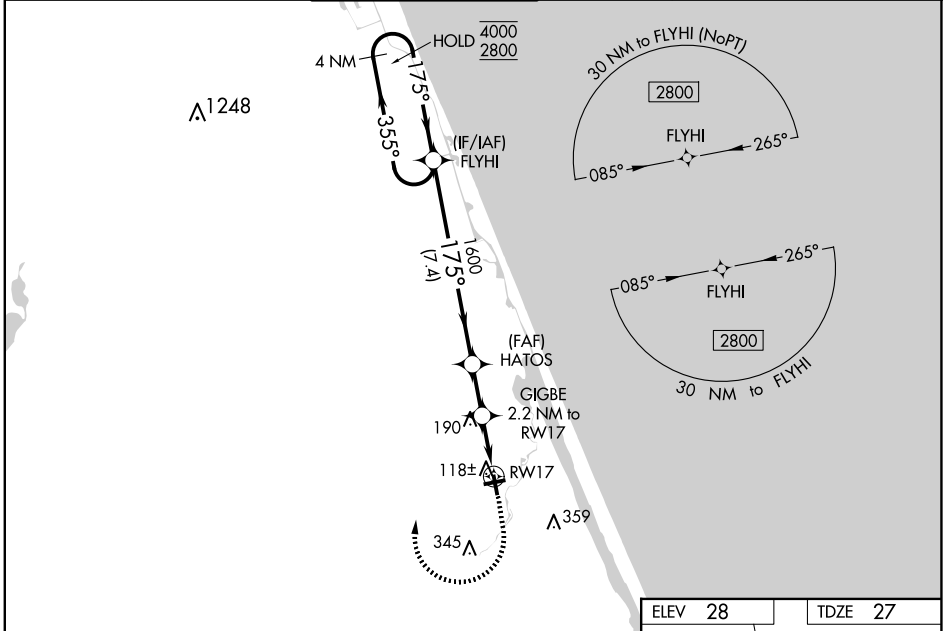
ORMOND BEACH MUNI (OMN)

RNP APCH - GPS.

⚠ For uncompensated Baro-VNAV systems, LNAV/VNAV NA below -15°C or above 54°C.
 ⚠ Baro-VNAV and VDP NA when using DAB altimeter setting. Rwy 17 helicopter visibility reduction below 3/4 SM NA. When local altimeter setting not received, use DAB altimeter setting: increase LPV DA to 321 feet; increase LNAV/VNAV DA to 316 feet; increase cll MDAs 20 feet.

MISSED APPROACH: Climb to 600 then climbing right turn to 2800 direct FLYHI and hold, continue climb-in-hold to 2800.

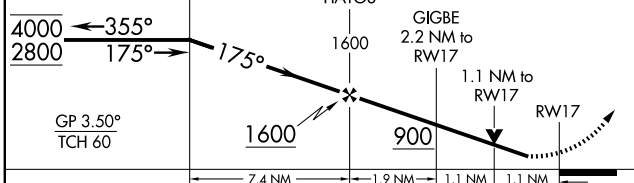
ATIS 118.475	DAYTONA APP CON 125.8 269.075	ORMOND BEACH TOWER* 119.075 (CTAF)	GND CON 121.625	CLNC DEL 121.625	UNICOM 123.05
------------------------	---	---	---------------------------	----------------------------	-------------------------



SE-3, 19 FEB 2026 to 19 MAR 2026

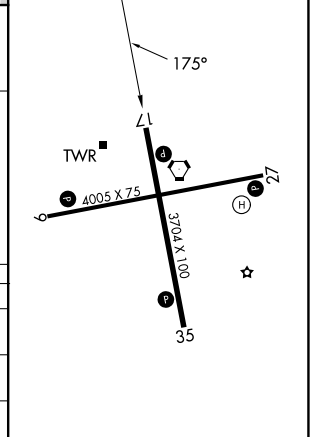
SE-3, 19 FEB 2026 to 19 MAR 2026

VGSI and RNAV glidepath not coincident (VGSI Angle 3.50/TCH 51).
 4 NM Holding Pattern FLYHI



CATEGORY	A	B	C	D
LPV DA	302-7/8	275 (300-7/8)		NA
LNAV/VNAV DA	297-7/8	270 (300-7/8)		NA
LNAV MDA	500-1	473 (500-1)	500-1 3/8 473 (500-1 3/8)	NA
CIRCLING	500-1	472 (500-1)	740-2 712 (800-2)	NA

ELEV 28	TDZE 27
---------	---------



REIL Rwy 9, 17, 27, and 35
 MRL Rwy 9-27 and 17-35