

VOR/DME BSV 114.05 Chan 87 (Y)	APP CRS 127°	Rwy Ldg TDZE Apt Elev 1164	N/A N/A 1164
--	------------------------	--------------------------------------	---

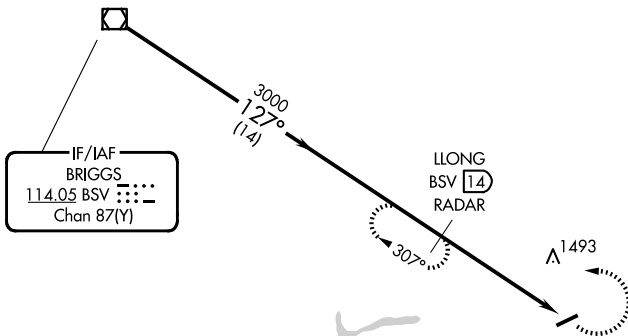
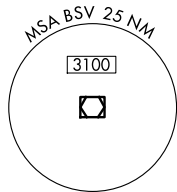
VOR-A

CARROLL COUNTY/TOLSON (T50)

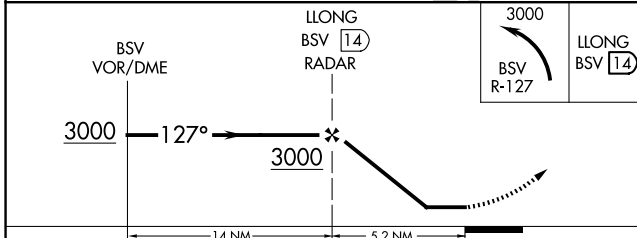
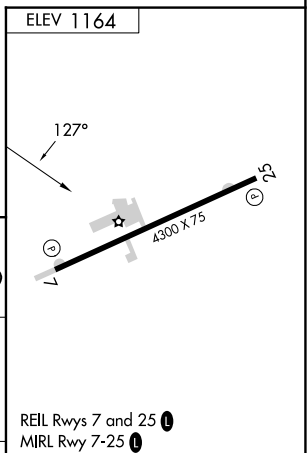
DME or RADAR required.	MISSED APPROACH: Climbing left turn to 3000 on BSV VOR/DME R-127 to LLONG/BSV 14 DME/RADAR and hold.
Procedure NA at night. Use Akron-Canton altimeter setting; when not received, use New Philadelphia altimeter setting and increase MDA 20 feet.	

CLEVELAND APP CON ★
125.5 371.875

UNICOM
122.7 (CTAF) **1**



IF/IAF
BRIGGS
114.05 BSV
Chan 87(Y)



CATEGORY	A	B	C	D	FAF to MAP 5.2 NM					
CIRCLING	1940-1	777 (800-1)	NA		Knots	60	90	120	150	180
					Min:Sec	5:12	3:28	2:36	2:05	1:44

VOR-A

EC-2, 19 FEB 2026 to 19 MAR 2026

EC-2, 19 FEB 2026 to 19 MAR 2026