

LOC/DME I-TEX 109.3 Chan 30	APP CRS 093°	Rwy Ldg TDZE Apt Elev 6911 9037 9070
--	------------------------	--

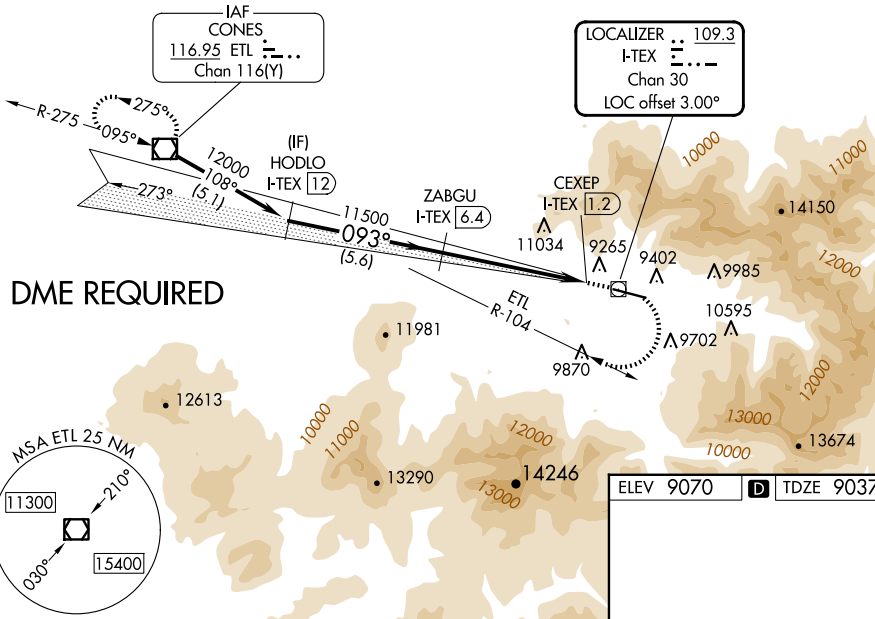
LOC RWY 9

TELLURIDE RGNL (TEX)

<p>◊ Circling NA north of Rwy 9-27. ◊ Circling NA at night. ◊ DME required.</p>	<p>MISSED APPROACH: Climb to 11800 then climbing right turn to 13500 on ETL R-104 to ETL VOR/DME and hold.</p>
---	--

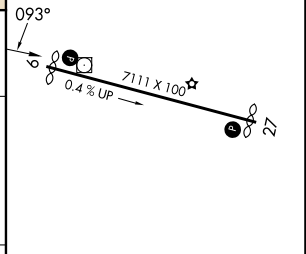
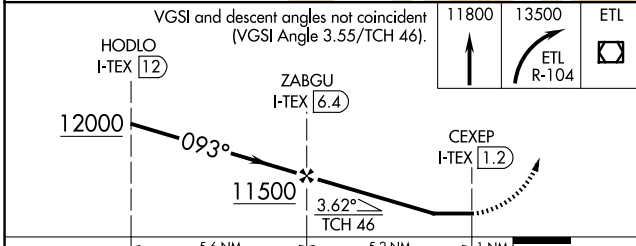
AWOS-3 118.325	DENVER CENTER 125.35 354.05	UNICOM 123.0 (CTAF) 0
--------------------------	---------------------------------------	---------------------------------

Procedure NA for arrivals at ETL VOR/DME on V382 northwest bound.



DME REQUIRED

ELEV 9070	D TDZE 9037
-----------	--------------------



CATEGORY	A	B	C	D
S-9	11340-1¼ 2303 (2300-1¼)	11340-1½ 2303 (2300-1½)	NA	
C CIRCLING	11340-1¼ 2270 (2300-1¼)	11340-1½ 2270 (2300-1½)	NA	

HIRL Rwy 9-27 **0**
REIL Rwy 9 and 27 **0**

SW-1, 19 FEB 2026 to 19 MAR 2026

SW-1, 19 FEB 2026 to 19 MAR 2026