

APP CRS 309°  
 Rwy Ldg 5032  
 TDZE 5723  
 Apt Elev 5737

# RNAV (GPS) RWY 31

ESCALANTE MUNI (1L7)

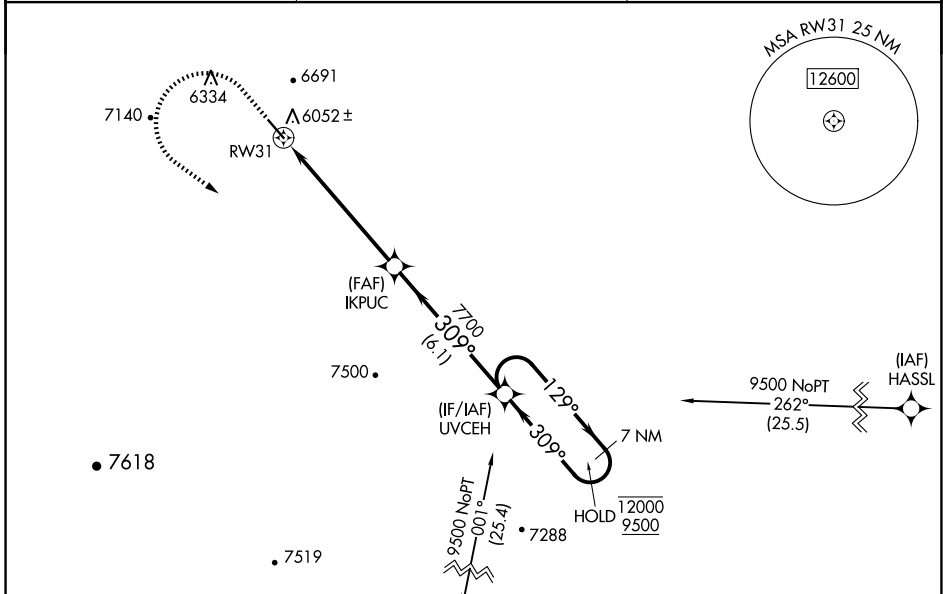
RNP APCH - GPS.  
 ▽ Baro-VNAV NA. Rwy 31 helicopter visibility reduction below 3/4 SM NA. Circling NA northeast of Rwy 13-31. Procedure NA at night. Use PGA allimeter setting.  
 ⚠ NA

MISSED APPROACH: Climb to 7600 then climbing left turn to 9500 direct UVCEH and hold, continue climb-in-hold to 9500.  
 \*Missed approach requires minimum climb of 328 feet per NM to 8000.  
 #Missed approach requires minimum climb of 320 feet per NM to 8020.

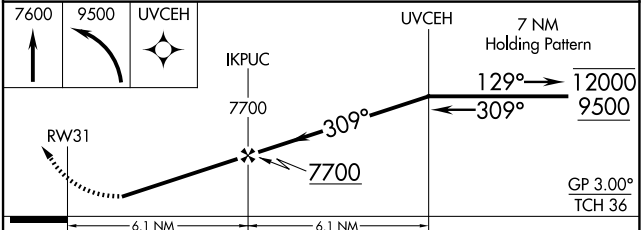
PGA ASOS  
**120.625**

SALT LAKE CENTER  
**133.6 269.25**

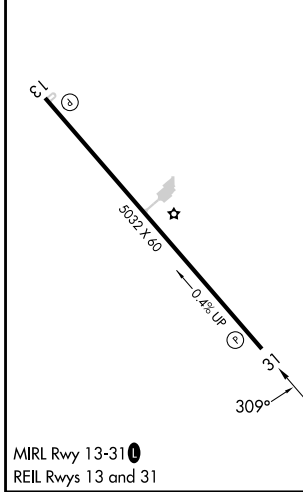
UNICOM  
**122.8 (CTAF) 0**



ELEV 5737 TDZE 5723



CATEGORY	A	B	C	D
LNAV/VNAV DA*	6534-2½	811 (800-2½)		NA
LNAV MDA#	6840-1¼ 1117 (1200-1¼)	6840-1½ 1117 (1200-1½)		NA
LNAV/VNAV DA	7169-6	1446 (1500-6)		NA
LNAV MDA	7280-1¼ 1557 (1600-1¼)	7280-1½ 1557 (1600-1½)		NA
CIRCLING	7280-1¼ 1543 (1600-1¼)	7280-1½ 1543 (1600-1½)		NA



MIRL Rwy 13-31  
 REIL Rws 13 and 31

SW-4, 19 FEB 2026 to 19 MAR 2026

SW-4, 19 FEB 2026 to 19 MAR 2026